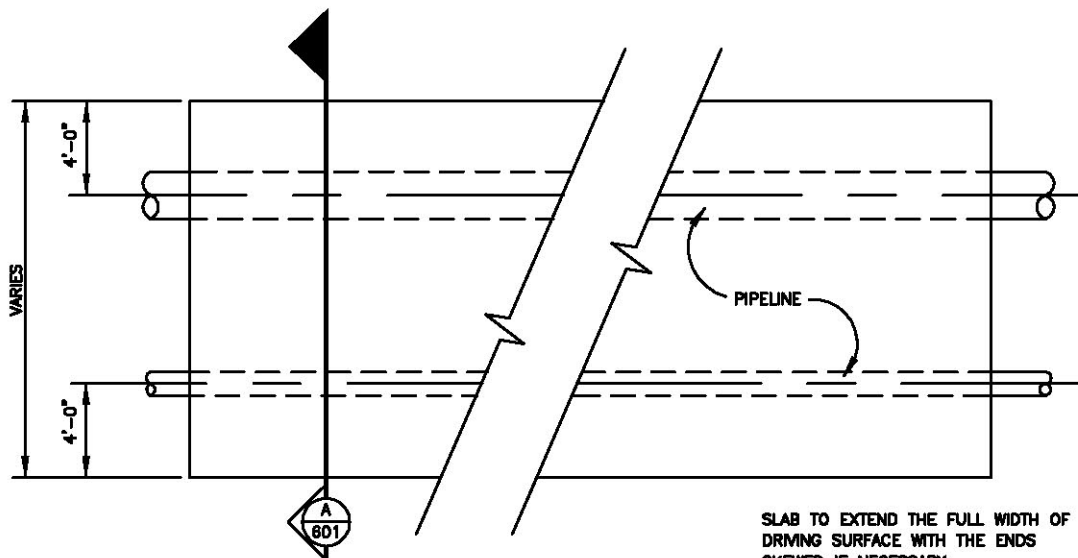
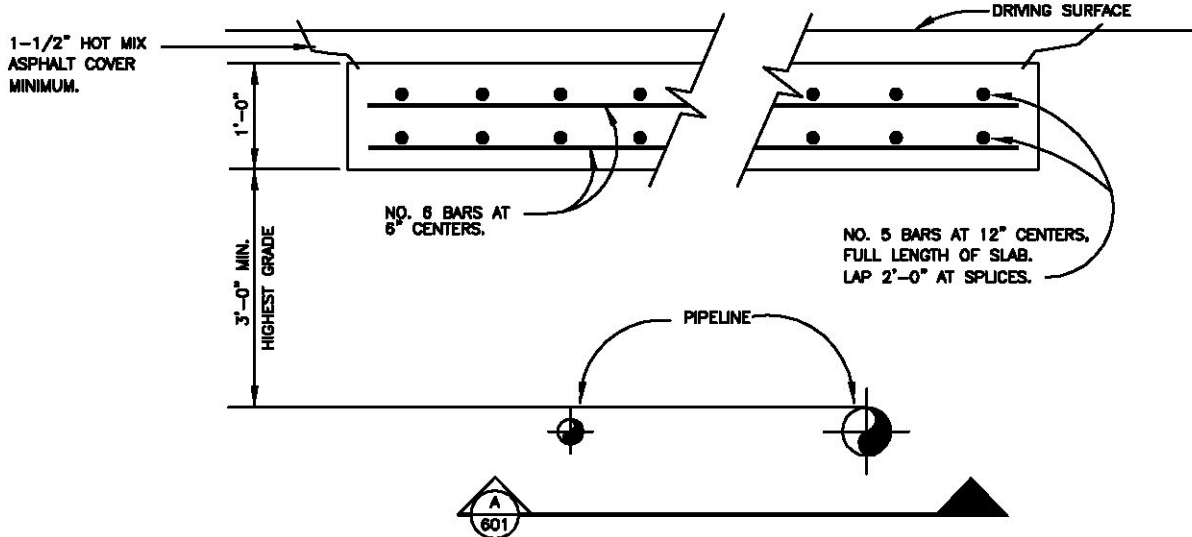


Miscellaneous

Gas Line Crossing Detail.....	D-601
Accessible Parking Sign Detail.....	D-603 (1-3)
Grease Trap Detail.....	D-605
Mailbox Detail.....	D-606
Utility Installation between Buildings	D-607
Reinforced Soil Walls Case I.....	D-608
School Flasher 1	D-609
Erosion Control Wall.....	D-611
Elevation Residential Drainage	D-612
Minimum Finished Floor Elevation	D-612
Diversion Dike	D-613
Earth Dike (Berm).....	D-614
State Requirements for Offsite Tracking Prevention	D-615 (1-2)
Sediment Basin	D-616
Sediment Trap.....	D-617
Slope Drain	D-618
Surface Roughening.....	D-619
Culvert Protection.....	D-620
Curb Drop Inlet.....	D-621
Surface Inlet Protection	D-622
Silt Fence	D-623
Silt Fence	D-624
Stone Dam	D-625
Straw Bale Fence.....	D-626
Temporary Erosion Control Bales	D-627 (1-2)
Hand Rails.....	D-630



SLAB TO EXTEND THE FULL WIDTH OF DRIVING SURFACE WITH THE ENDS SKEWED IF NECESSARY.



LOADING: GROSS LOAD 150 TONS - MAXIMUM AXLE LOAD 80 TONS.
 CONCRETE: ULTIMATE STRENGTH - 2500 P.S.I. IN 28 DAYS.
 REINFORCING STEEL: A.S.T.M. A-15 INTERMEDIATE GRADE, AND
 A.S.T.M. A-305 HIGH BOND.
 CAUTION: HEAVY CONSTRUCTION EQUIPMENT SHALL NOT BE OPERATED
 OVER UNPROTECTED PIPE AND SHALL NOT BE OPERATED
 OVER SLAB UNTIL 14 DAYS AFTER POURING.

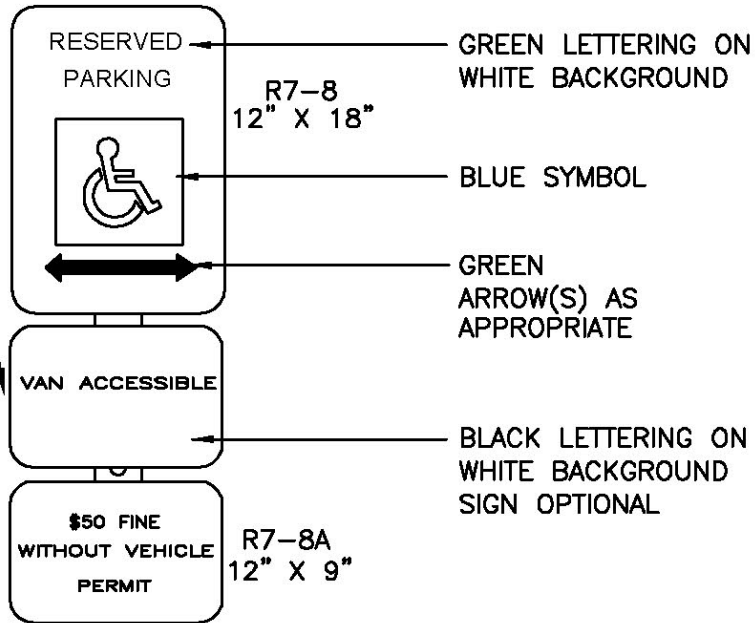
CONSTRUCTION
STANDARDS

GAS LINE CROSSING DETAIL

STANDARD No. D-601 SHEET 1 OF 1

CITY OF
AZTEC
PUBLIC WORKS
DEPARTMENT

VAN ACCESSIBLE PARKING SPACES SHALL HAVE AN ADDITIONAL SIGN MOUNTED BELOW THE ACCESSIBLE PARKING SIGN UNLESS ALL THE ACCESSIBLE PARKING SPACES COMPLY WITH THE STANDARDS FOR VAN ACCESSIBLE PARKING.



5 FEET MINIMUM TO BOTTOM OF ANY SIGNAGE

40" MIN.

ANCHOR

STURDY POST

NOTES

1. SIGNS SHALL CONFORM TO THE STANDARDS OF THE "MANUAL ON UNIFORM TRAFFIC CONTROL DEVICES.
2. SIGNS SHALL BE SET DIRECTLY FACING THE LINE OF TRAVEL FOR THE VEHICLE ENTERING THE STALL (NOT < 45°)
3. SIGNS SHALL BE MOUNTED ON A STURDY POST AT THE HEIGHT SPECIFIED HERE IN, OR MAY BE SECURELY BOLTED TO AN ADJACENT WALL
4. EACH SPACE SHALL BE POSTED WITH A SIGN, CENTERED ON THE STALL, HOWEVER, ONE SIGN MAY BE USED BETWEEN THE TWO SPACES WITH THE APPROPRIATE ARROWS
5. 40" MIN. FROM FACE OF ADJACENT CURB OR BUMPER BLOCK

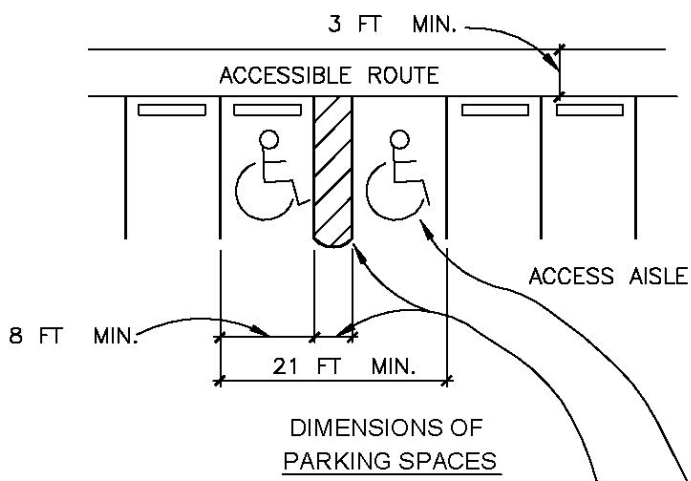
ACCESSIBLE PARKING SIGNS ARE AVAILABLE FROM THE BUILDING INSPECTION DIVISION AT COST AND ARE IN STOCK.
 TELEPHONE 599-1304.
 HOURS: 8:00 AM TO 12:00 PM AND 1:00 PM TO 5:00 PM MONDAY THROUGH FRIDAY.

CONSTRUCTION STANDARDS

ACCESSIBLE PARKING SIGN DETAIL

STANDARD No. D-603 SHEET 1 OF 3

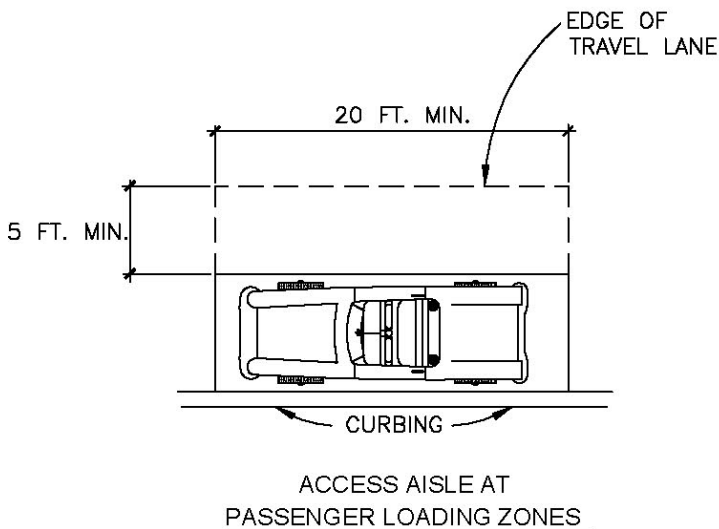
CITY OF AZTEC
 PUBLIC WORKS DEPARTMENT



NOTE:
 ACCESS AISLES SHALL ADJOIN AN ACCESSIBLE ROUTE. TWO PARKING SPACES SHALL BE PERMITTED TO SHARE A COMMON ACCESS AISLE. ACCESSIBLE PARKING SPACES SHALL BE PERMITTED TO HAVE ACCESS AISLES PLACED ON EITHER SIDE OF THE CAR OR VAN PARKING SPACE EXCEPT FOR ANGLED VAN PARKING SPACES. VAN PARKING SPACES THAT ARE ANGLED SHALL HAVE ACCESS AISLES LOCATED ON THE PASSENGER SIDE OF THE PARKING SPACE.

A CLEAR, VISIBLE DEPICTION OF THE INTERNATIONAL SYMBOL OF ACCESSIBILITY SHALL BE PAINTED IN BLUE ON THE PAVEMENT SURFACE. SYMBOL ON PAVEMENT IS REQUIRED.

5 FEET MINIMUM UNLESS ACCESSIBLE ACCESS (8 FEET MINIMUM REQUIRED FOR VAN ACCESSIBLE ACCESS AISLE). ACCESS AISLE SHALL BE CLEARLY MARKED BY BLUE DIAGONAL 4 INCH PAVEMENT STRIPING.



CONSTRUCTION
STANDARDS

ACCESSIBLE PARKING STALLS

STANDARD No. D-603 SHEET 2 OF 3

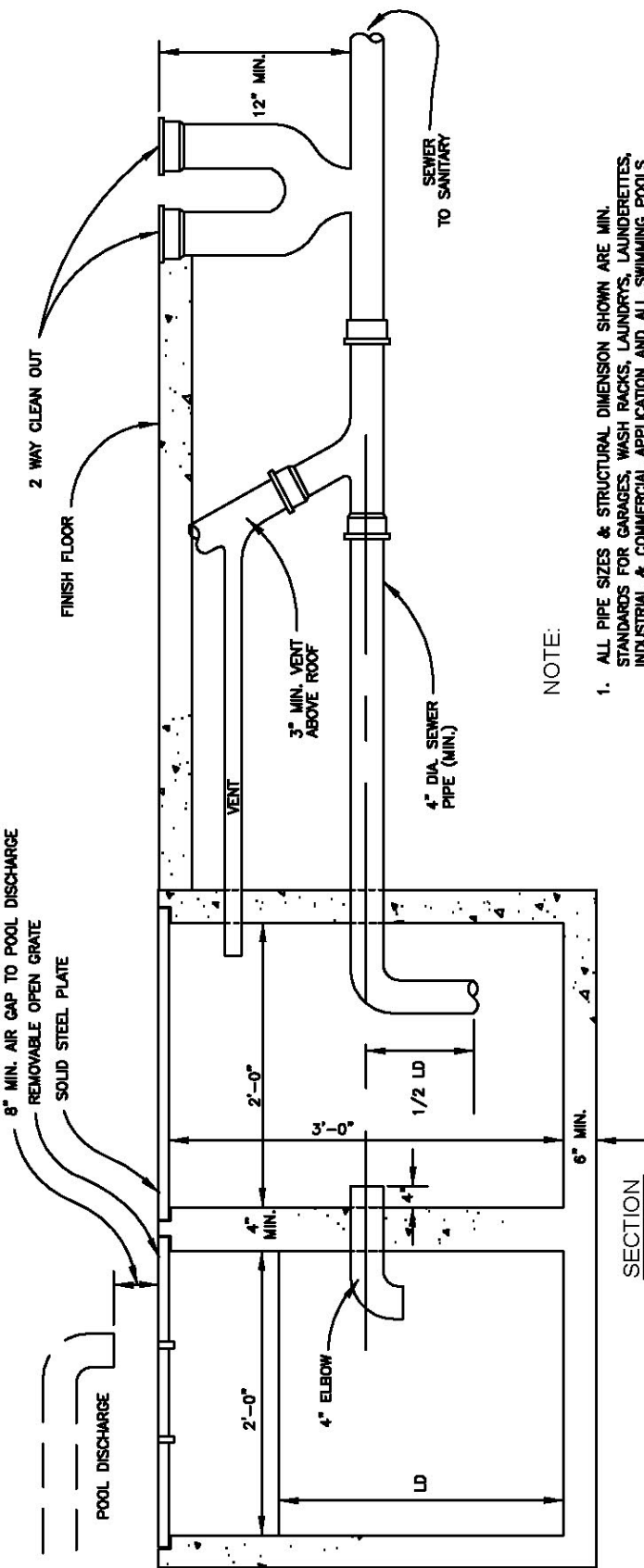
CITY OF
AZTEC

**PUBLIC WORKS
DEPARTMENT**

- + Minimum stall width for a single stall may be either an eight foot stall with a five foot painted access aisle, or, a single stall 13 ft. in width (no marked access aisle required).
- + Two adjacent parking spaces may share an access aisle. Two eight foot stalls with a marked five foot access aisle between.
- + Access aisles shall be a part of an accessible route to the building or facility entrance.
- + Where an accessible stall is located at the end of a row of parking stalls and where there is an accessible route on the open side, then the accessible stall may be of conventional width (9 ft. minimum).
- + Parked vehicle overhangs shall not reduce the clear width of an accessible circulation route.
- + The Community Development Director or his designee may waive or alter these requirements upon written request.

8" MIN. AIR CAP TO POOL DISCHARGE
REMOVABLE OPEN GRATE
SOLID STEEL PLATE

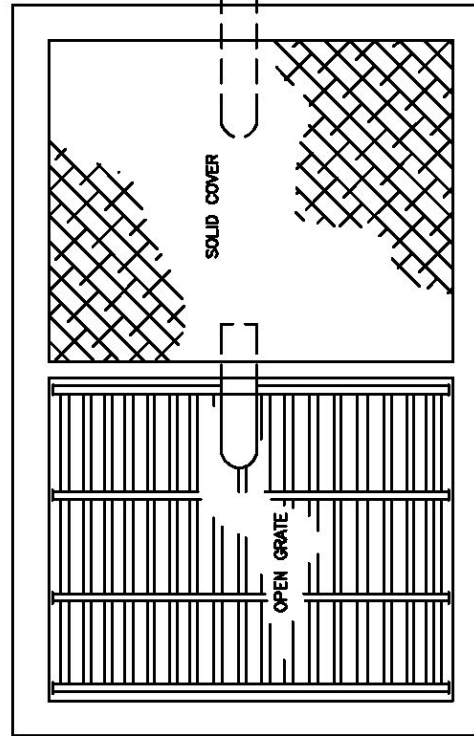
2 WAY CLEAN OUT
FINISH FLOOR



SECTION

NOTE:

1. ALL PIPE SIZES & STRUCTURAL DIMENSION SHOWN ARE MIN. STANDARDS FOR GARAGES, WASH RACKS, LAUNDRIES, LAUNDERETTES, INDUSTRIAL & COMMERCIAL APPLICATION AND ALL SWIMMING POOLS OF 30,000 GAL. CAP & OVER.
2. TRAFFIC GRATING STEEL PLATES, FRAMES, PIT WALL THICKNESS & SIZES INCLUDING REINFORCING, SHALL BE IN ACCORDANCE WITH DESIGN LOADS REQUIRED OR EACH INSTALLATION.



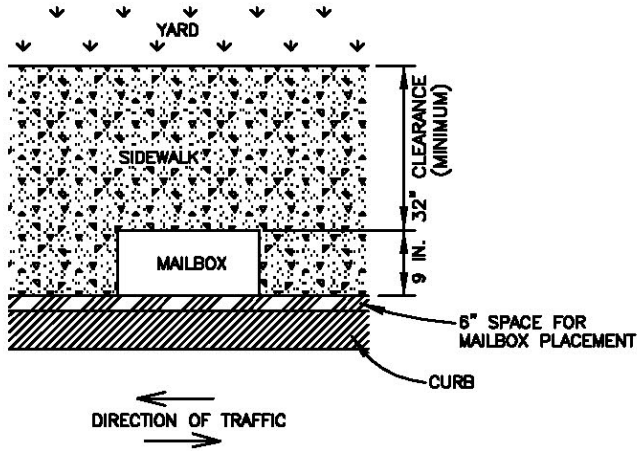
PLAN

CONSTRUCTION
STANDARDS

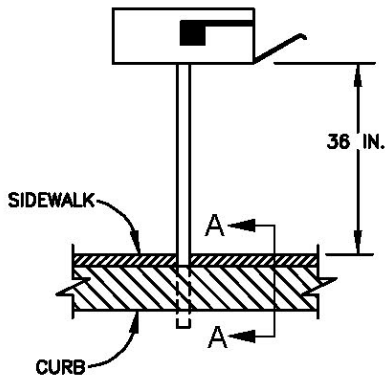
GREASE TRAP DETAIL

STANDARD No. D-605 SHEET 1 OF 1

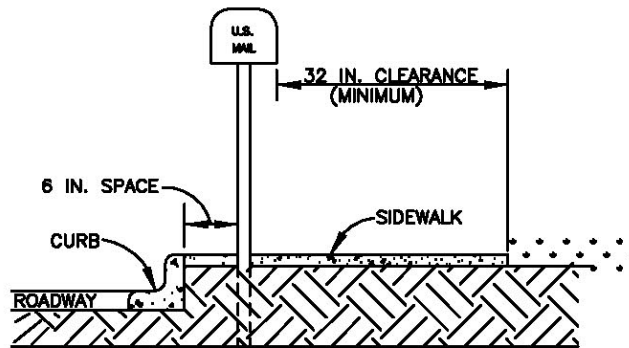
CITY OF
AZTEC
PUBLIC WORKS
DEPARTMENT



TOP VIEW



FRONT VIEW



SIDE VIEW

(SECTION A-A)

REV.	DATE
1	10/30/95
2	1/20/99

*USE SAME DETAIL FOR PAPER BOX.

CONSTRUCTION
STANDARDS

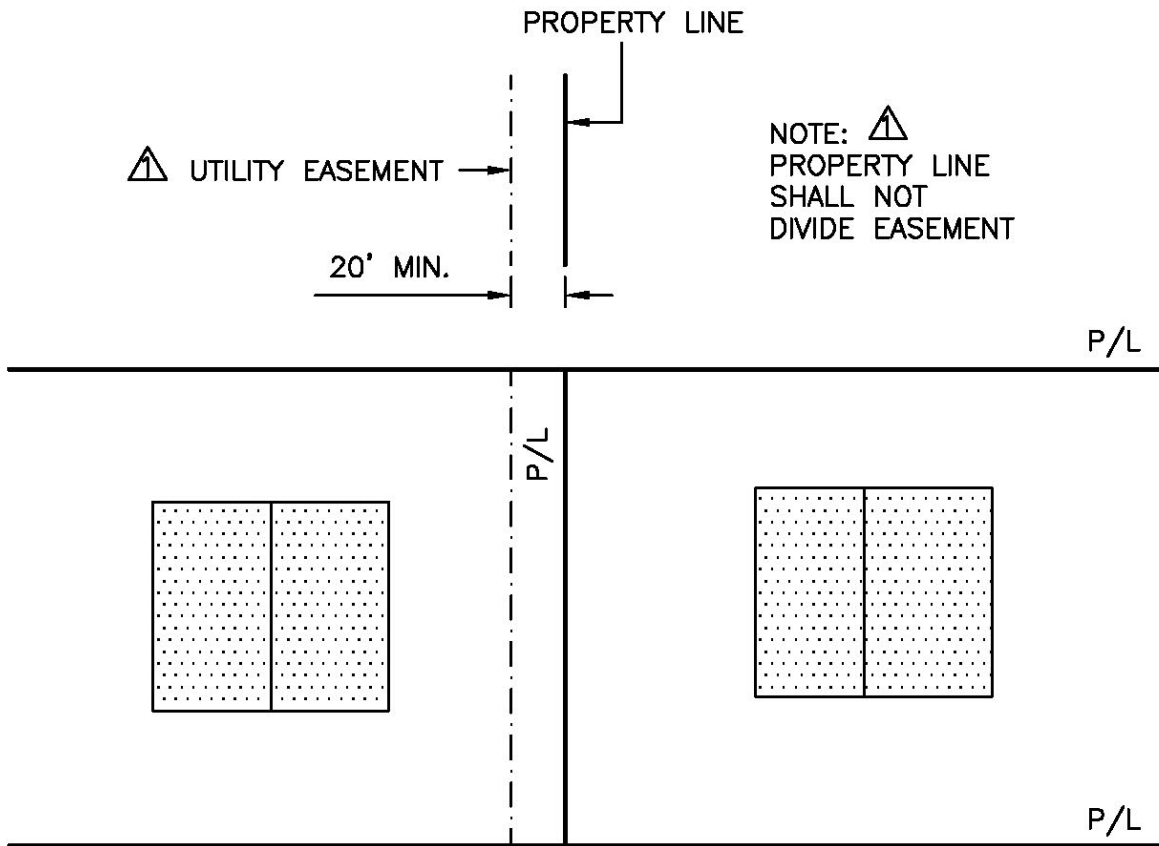
MAILBOX DETAIL*

STANDARD No. D-606 SHEET 1 OF 1

CITY OF
AZTEC
PUBLIC WORKS
DEPARTMENT



FRONT VIEW



PLAN VIEW

REV.	DATE
△	01/31/06

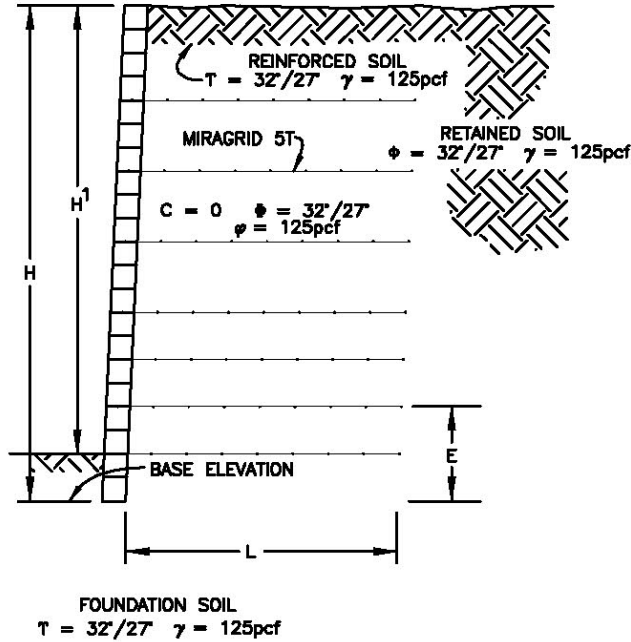
CONSTRUCTION
STANDARDS

UTILITY INSTALLATION
BETWEEN BUILDINGS

STANDARD No. D-607 SHEET 1 OF 1

CITY OF
AZTEC
PUBLIC WORKS
DEPARTMENT

CASE I



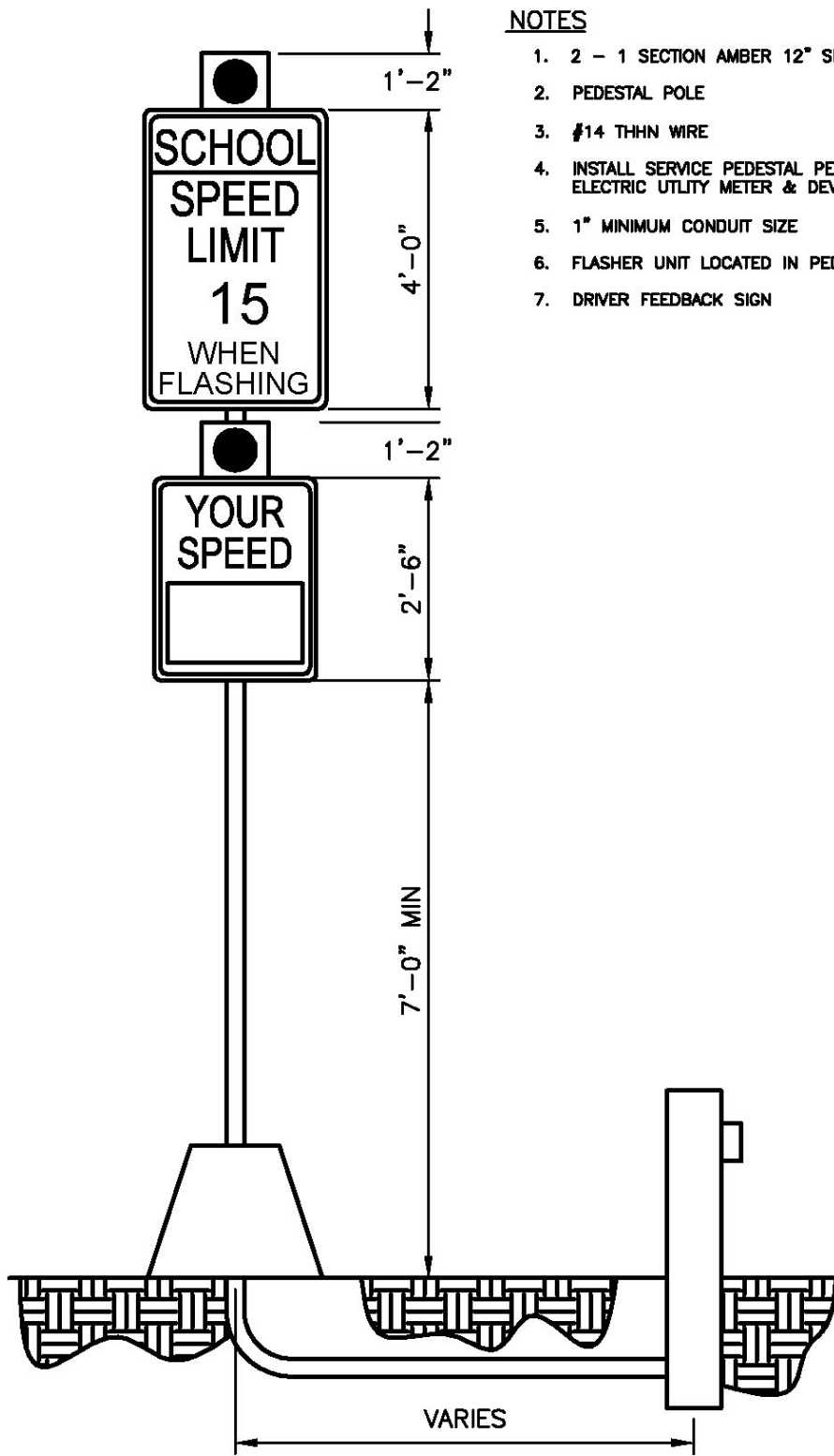
REINFORCED SOIL WALLS						
EXPOSED HEIGHT H, (FT)	TOTAL HEIGHT H, (FT)	NO. COURSES	THICKNESS IN.	NO. GRID LAYERS	GRID LENGTH L, (FT)	GEOGRID PLACEMENT ELEVATION E, (FT) ABOVE BASE ELEVATION
CASE #1	T 2 27	$\gamma \leq 125\text{pcf}$	PI = 10			
4.0	4.5	9	6	1	3.0	E ₁ - 2.0
5.5	6.5	13	6	2	4.0	E ₁ - 1.0 E ₂ - 4.0
DESIGN BASED ON MIRAGRIDS 5T. BUILDER MAY USE COMPARABLE OR EQUAL. IT IS RESPONSIBILITY OF THE INSTALLER TO SHOW COMPARISON TO CHIEF INSPECTOR PRIOR TO CONSTRUCTION.						

CONSTRUCTION
STANDARDS

REINFORCED SOIL WALLS
CASE I

STANDARD No. D-608 SHEET 1 OF 1

CITY OF
AZTEC
PUBLIC WORKS
DEPARTMENT



NOTES

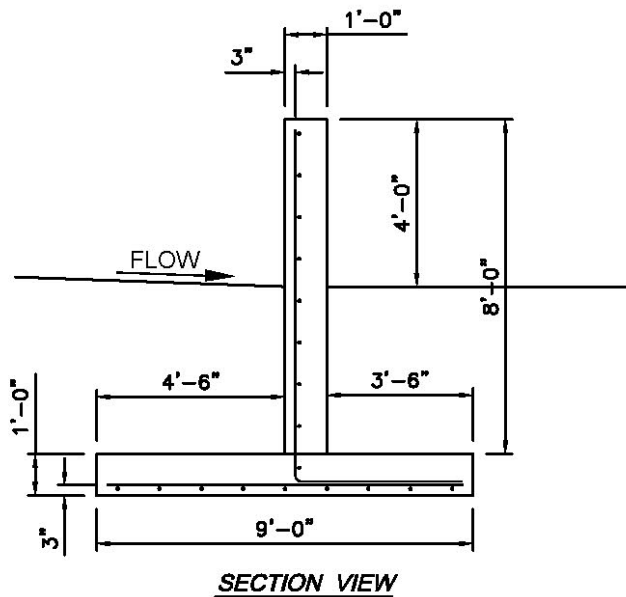
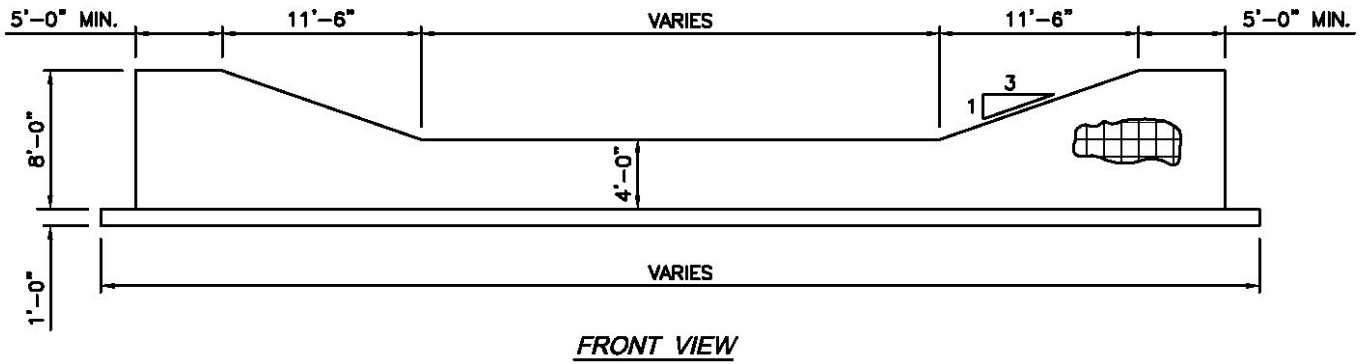
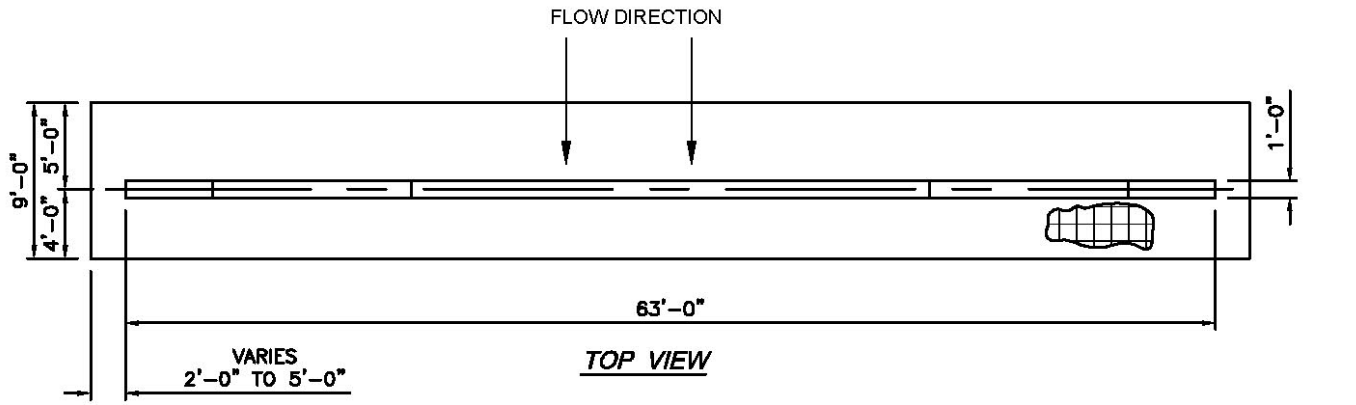
1. 2 - 1 SECTION AMBER 12" SIGNAL HEAD
2. PEDESTAL POLE
3. #14 THHN WIRE
4. INSTALL SERVICE PEDESTAL PER US 26 OF THE FARMINGTON ELECTRIC UTILITY METER & DEVICE GUIDE
5. 1" MINIMUM CONDUIT SIZE
6. FLASHER UNIT LOCATED IN PEDESTAL POLE BASE
7. DRIVER FEEDBACK SIGN

CONSTRUCTION
STANDARDS

SCHOOL FLASHER - 1

STANDARD NO. D-609 SHEET 1 OF 1

CITY OF
AZTEC
PUBLIC WORKS
DEPARTMENT



NOTE:

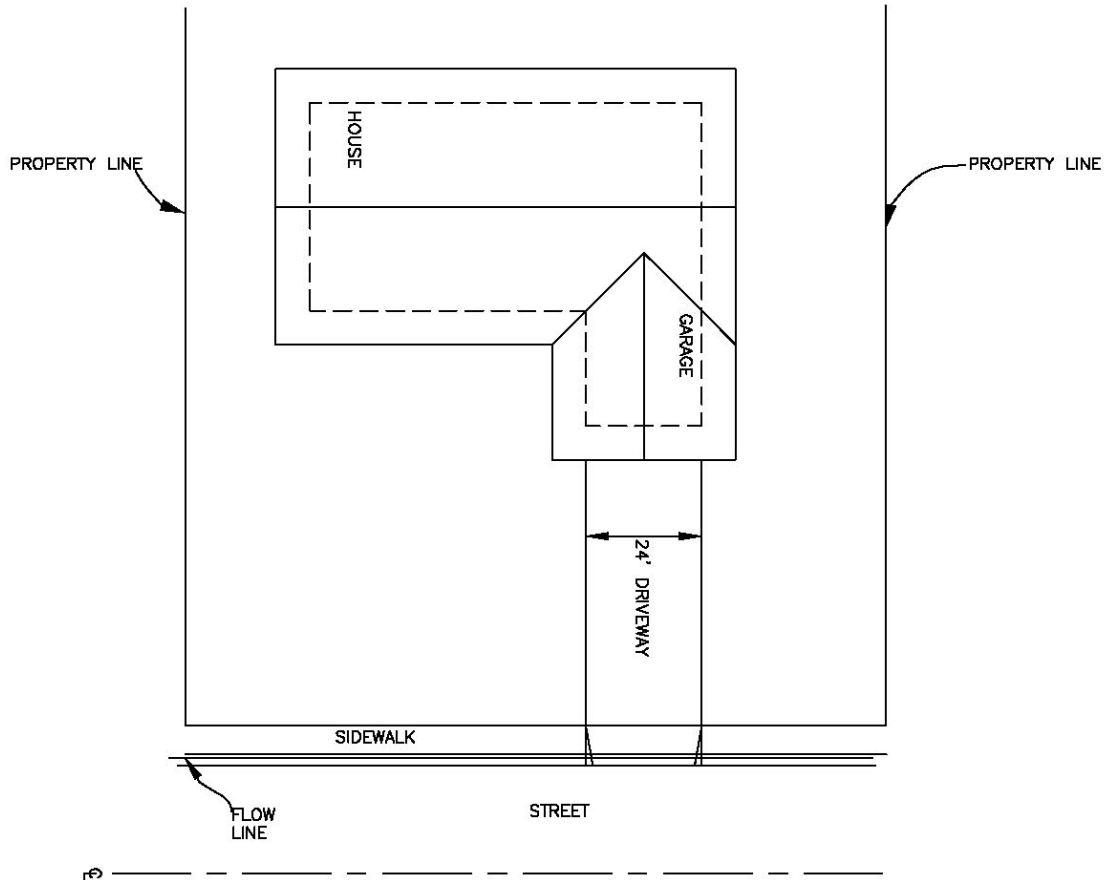
1. #4 REBAR 12" O.C. IN BOTH DIRECTIONS
2. SCH. 40 STEEL
3. ALL DIMENSIONS ARE SUBJECT TO CHANGE DEPENDING ON FLOW REQUIREMENTS AND SCOUR DEPTH.
4. REBAR SHALL BE PLACED 3" FROM UP STREAM FACE IN WALL AND 3" FROM BOTTOM IN FOOTER.
4. USE 4000 P.S.I. CONCRETE

CONSTRUCTION
STANDARDS

EROSION CONTROL WALL

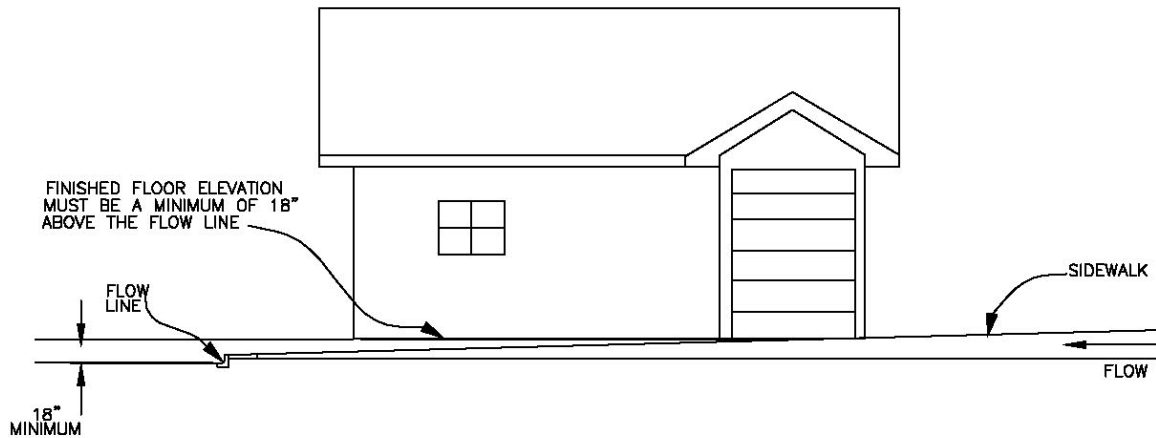
STANDARD No. D-611 SHEET 1 OF 1

CITY OF
AZTEC
PUBLIC WORKS
DEPARTMENT



NOTE:

1. ALL IMPROVEMENTS MUST DRAIN AWAY FROM THE HOUSE TO STREET, DRAINAGE EASEMENT OR DETENTION POND.
2. FINISHED FLOOR ELEVATION MUST BE A MINIMUM OF 18" ABOVE THE FLOW LINE OF THE GUTTER AT LOW SIDE OF LOT.
3. IF CURB & GUTTER ARE ABSENT FLOWLINE IS AT THE EDGE OF ROADWAY AT LOW SIDE OF LOT.

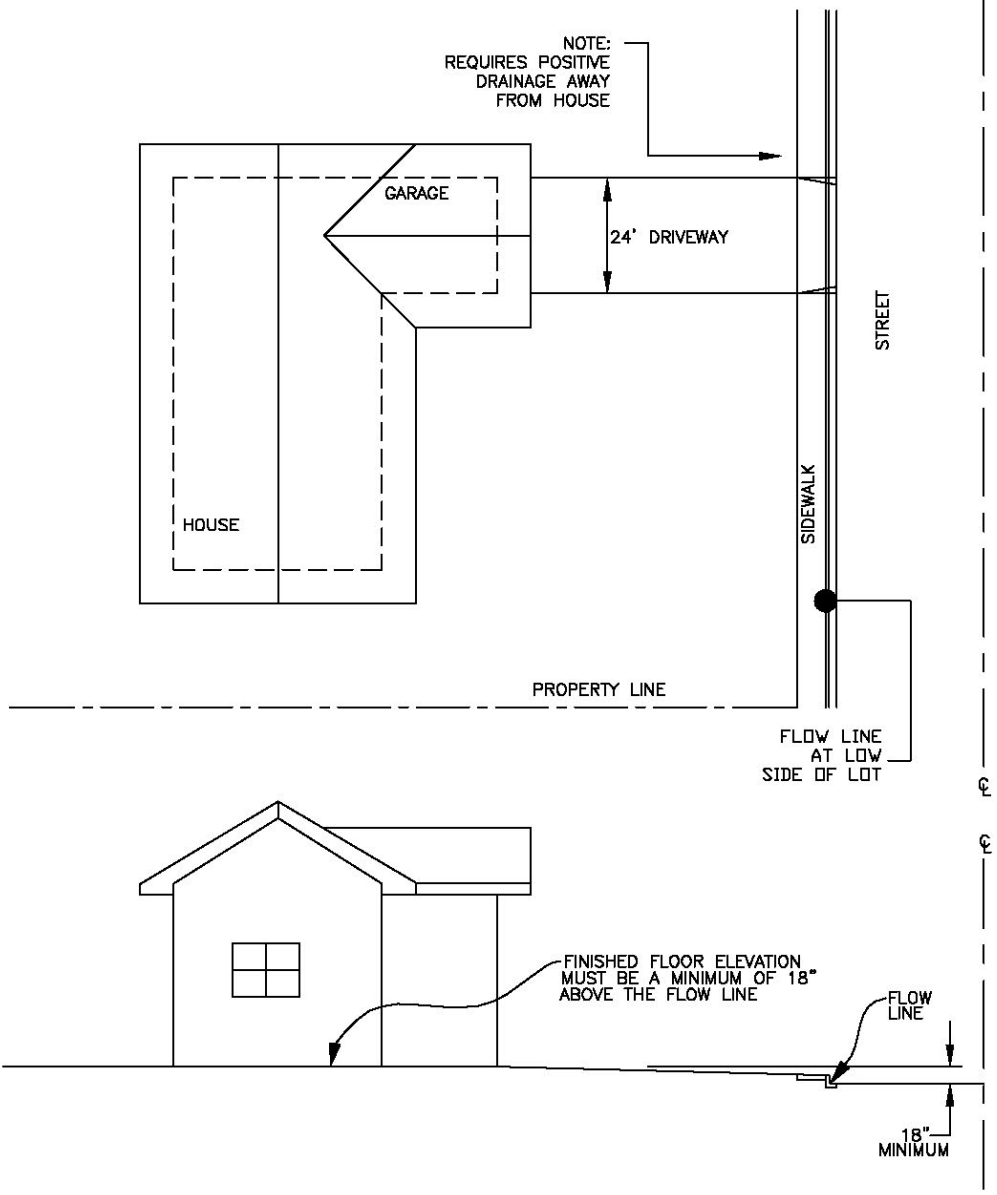


**CONSTRUCTION
STANDARDS**

**ELEVATION RESIDENTIAL
DRAINAGE**

STANDARD No. D-612 SHEET 1 OF 1

**CITY OF
AZTEC**
**PUBLIC WORKS
DEPARTMENT**



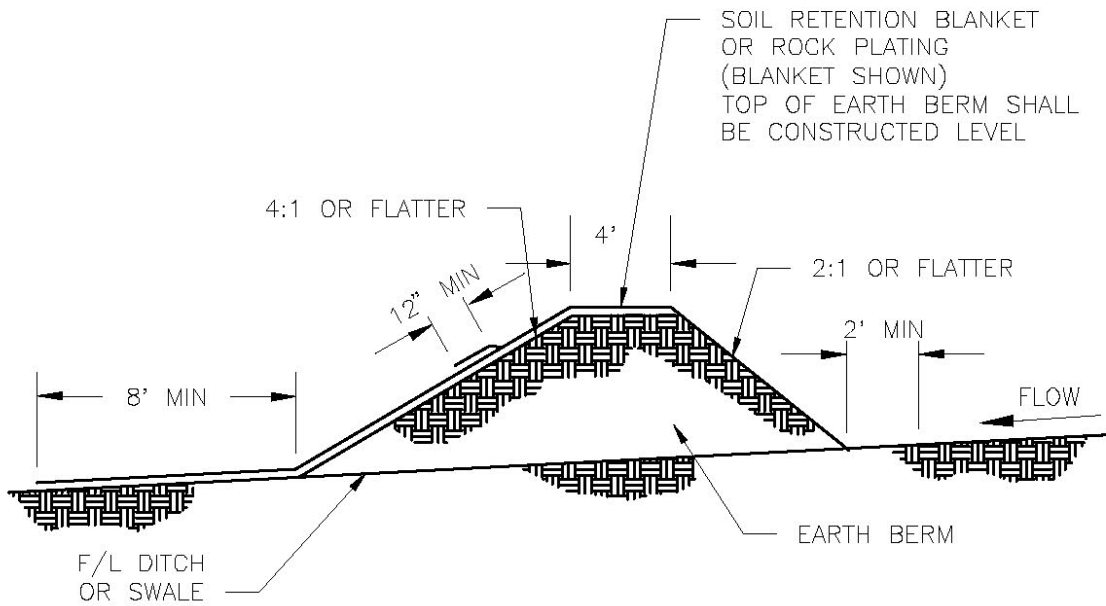
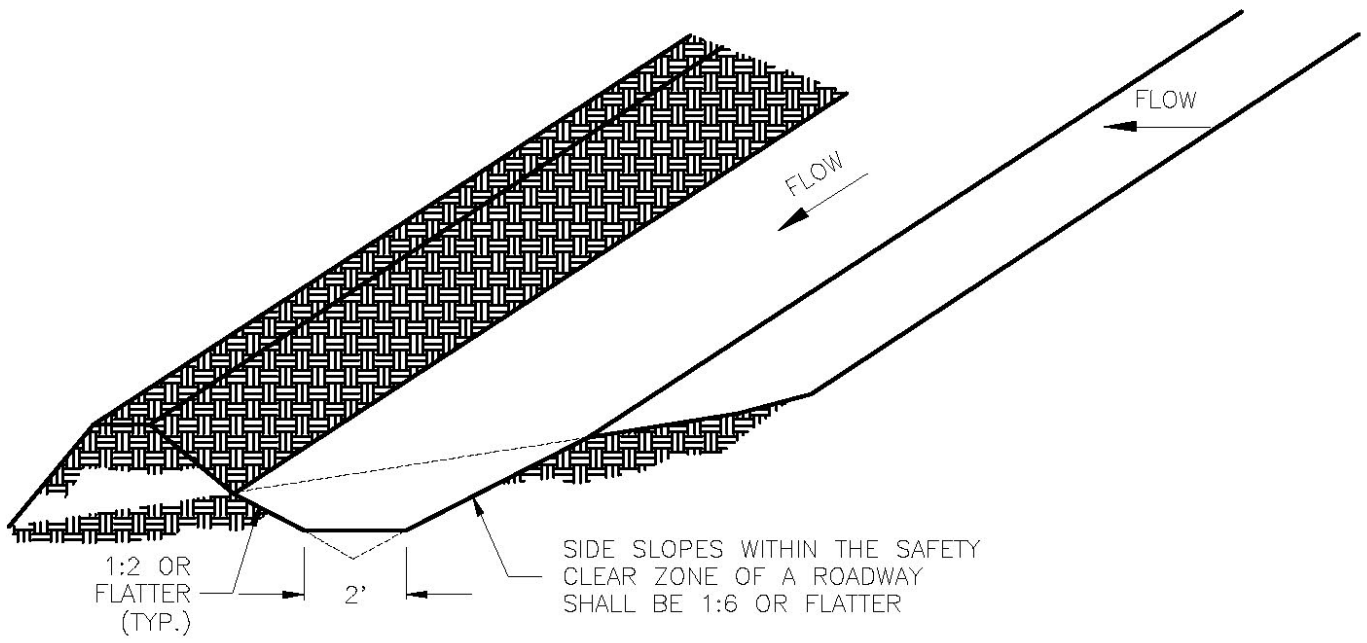
NOTE:
1. IF NO CURB & GUTTER 18" MEASURED FROM CROWN OF STREET.
2. ANY VARIATION OF FINISHED FLOOR ELEVATION TO BE APPROVED BY CITY ENGINEER.

CONSTRUCTION STANDARDS

MINIMUM FINISHED FLOOR ELEVATION

STANDARD No. D-612 SHEET 1 OF 1

CITY OF AZTEC
PUBLIC WORKS DEPARTMENT



TYPICAL SWALE CONFIGURATION

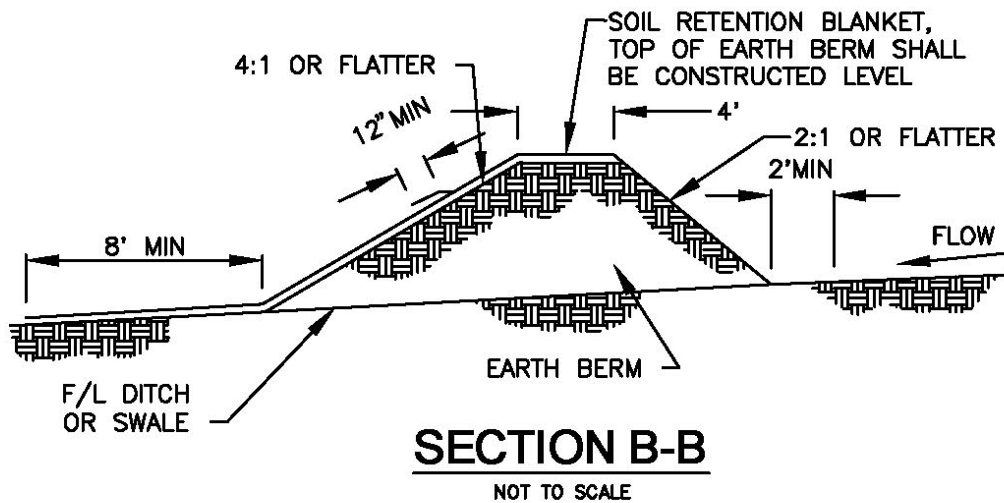
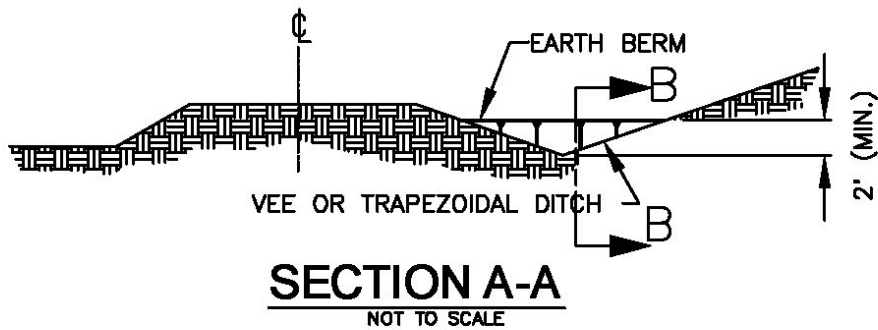
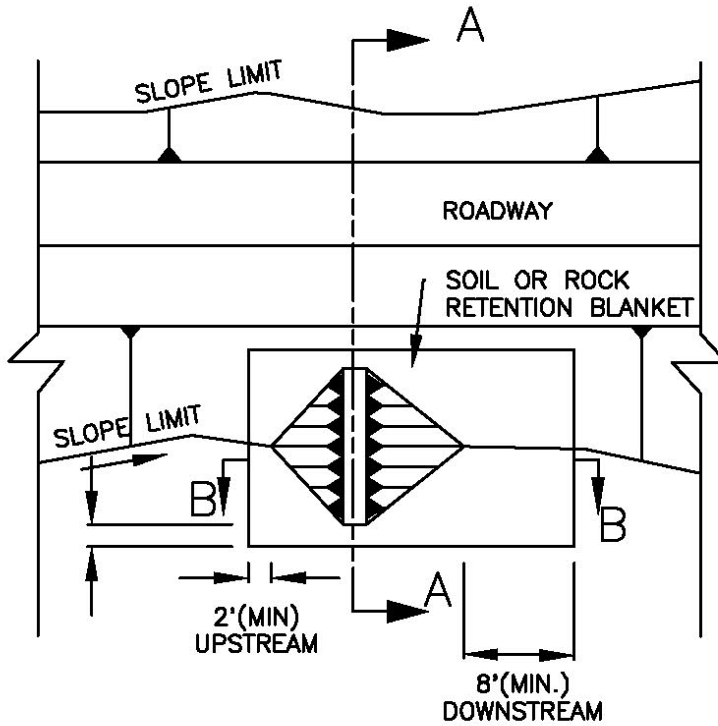
NOT TO SCALE

CONSTRUCTION
STANDARDS

DIVERSION DIKE

STANDARD No. D-613 SHEET 1 OF 1

CITY OF
AZTEC
PUBLIC WORKS
DEPARTMENT



CONSTRUCTION
STANDARDS

EARTH DIKE (BERM)

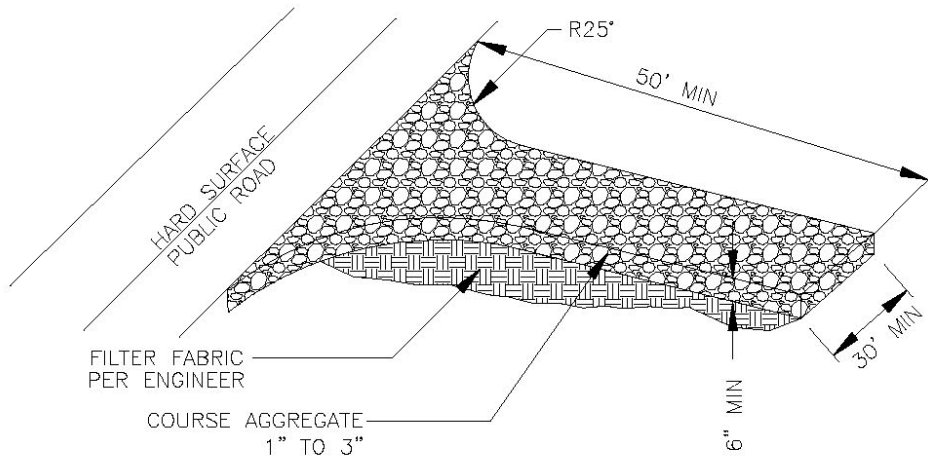
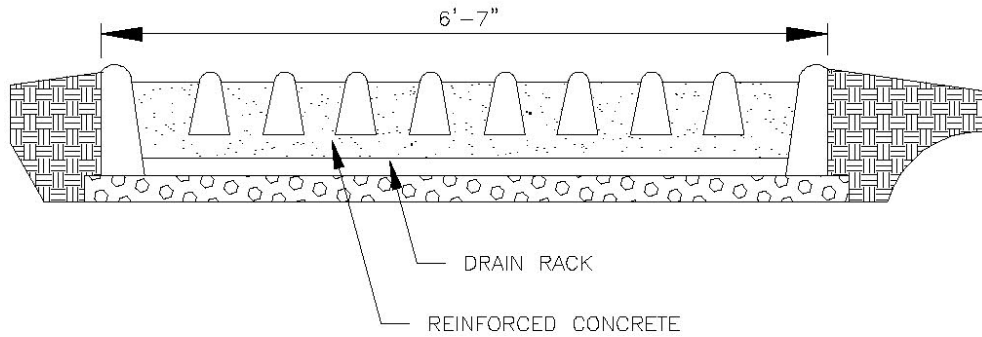
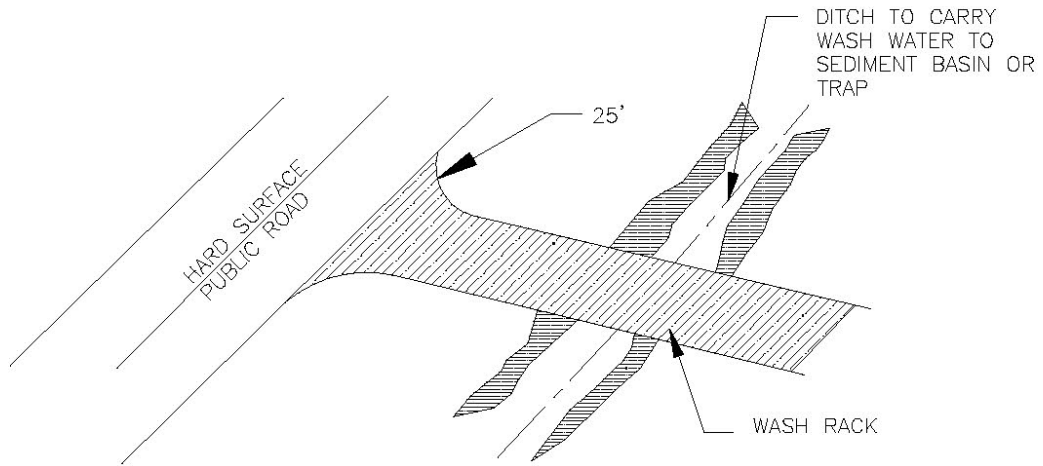
STANDARD No. D-614 SHEET 1 OF 1

CITY OF
AZTEC

PUBLIC WORKS
DEPARTMENT

CITY CONTRACTS

REFERENCE FOR OTHERS



NOT TO SCALE

CONSTRUCTION
STANDARDS

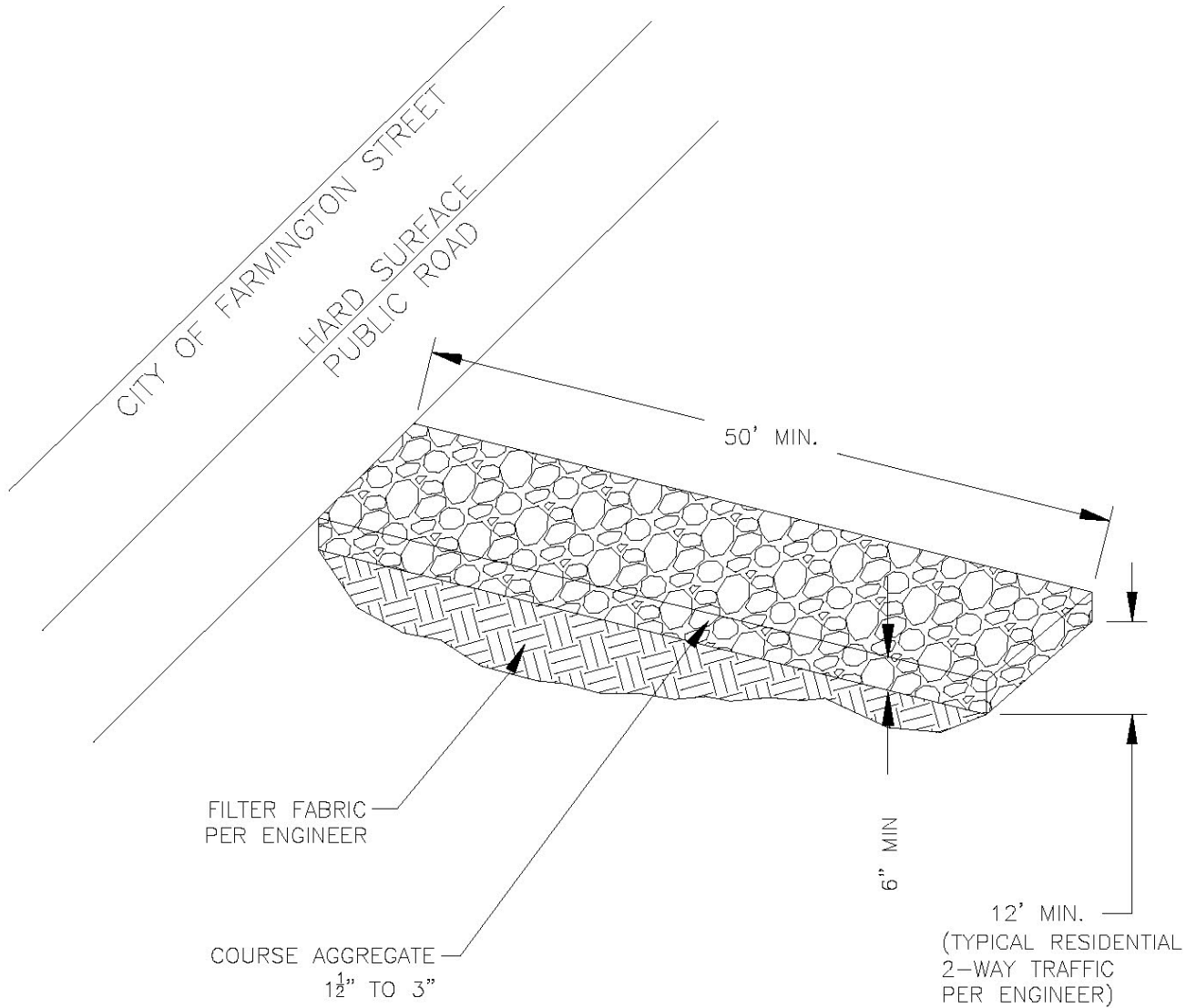
STATE REQUIREMENTS FOR OFFSITE TRACKING PREVENTION

STANDARD No. D-615 SHEET 1 OF 2

CITY OF
AZTEC
PUBLIC WORKS
DEPARTMENT

CITY CONTRACTS

REFERENCE FOR OTHERS



NOT TO SCALE

CONSTRUCTION
STANDARDS

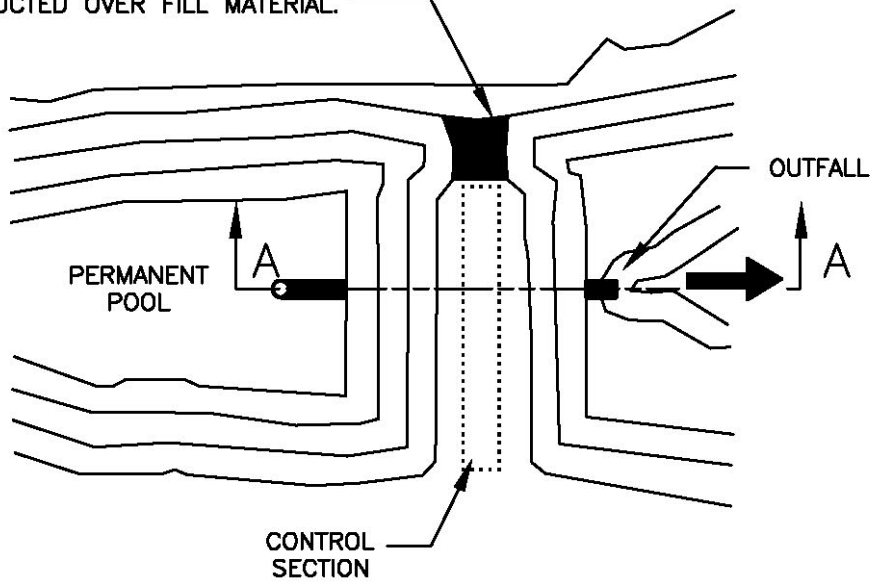
CITY REQUIREMENTS FOR OFFSITE TRACKING PREVENTION

STANDARD No. D-615 SHEET 2 OF 2

CITY OF
AZTEC
PUBLIC WORKS
DEPARTMENT

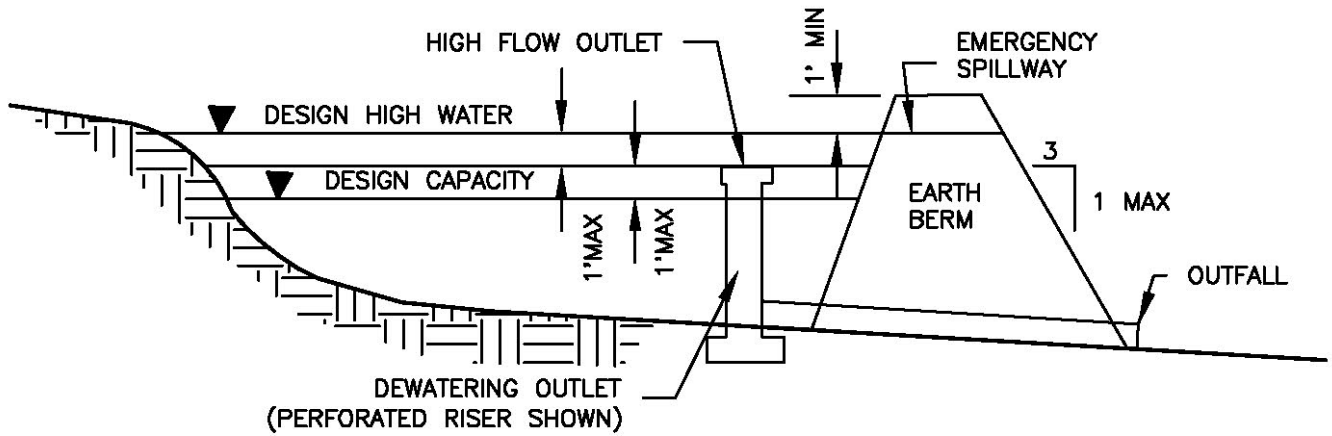
CITY CONTRACTS
REFERENCE FOR OTHERS

EMERGENCY SPILLWAY SHOULD NOT BE
CONSTRUCTED OVER FILL MATERIAL.



PLAN VIEW

NOT TO SCALE



CROSS SECTION A-A

NOT TO SCALE

CONSTRUCTION
STANDARDS

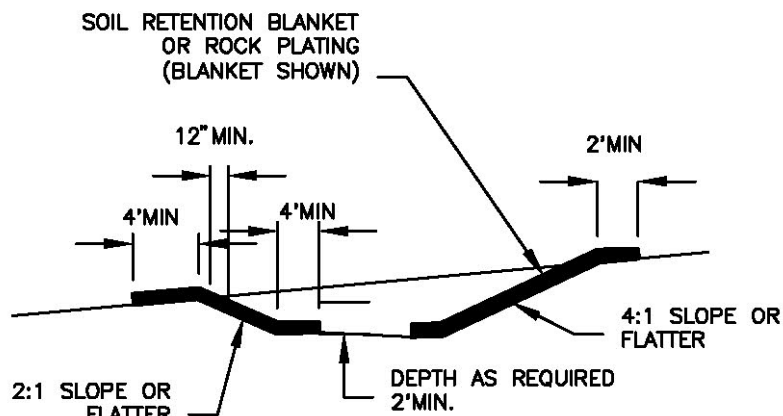
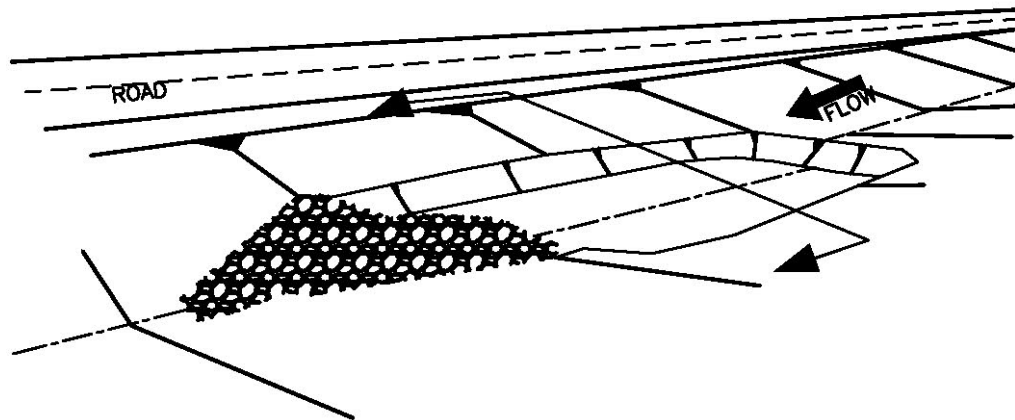
SEDIMENT BASIN

STANDARD No. D-616 SHEET 1 OF 1

CITY OF
AZTEC
PUBLIC WORKS
DEPARTMENT

CITY CONTRACTS

REFERENCE FOR OTHERS



CROSS SECTION A-A

NOT TO SCALE

NOTES SEDIMENT TRAPS

1. TEMPORARY SEDIMENT TRAPS MAY BE CONSTRUCTED BY EXCAVATION ALONE OR BY EXCAVATION IN COMBINATION WITH AN ENBANKMENT.
2. TEMPORARY SEDIMENT TRAPS ARE OFTEN USED IN CONJUNCTION WITH A DIVERSION DIKE OR SWELL.
3. THE DRAINAGE AREA FOR THE SEDIMENT TRAP SHOULD NOT EXCEED 5 DISTURBED ACRES.
4. THE TRAP MUST BE ACCESSIBLE FOR EASE OF REGULAR MAINTENANCE, WHICH IS CRITICAL TO ITS PROPER FUNCTIONING.
5. SEDIMENT TRAPS ARE TEMPORARY MEASURES AND SHOULD NOT REMAIN IN PLACE LONGER THAN 18 TO 24 MONTHS.
6. THE ENBANKMENT MAY NOT EXCEED 5 FT. IN HEIGHT.
7. THE RECOMMENDED MINIMUM WIDTH AT THE TOP OF THE ENBANKMENT IS BETWEEN 2 FT. AND 5 FT.

CONSTRUCTION
STANDARDS

SEDIMENT TRAP

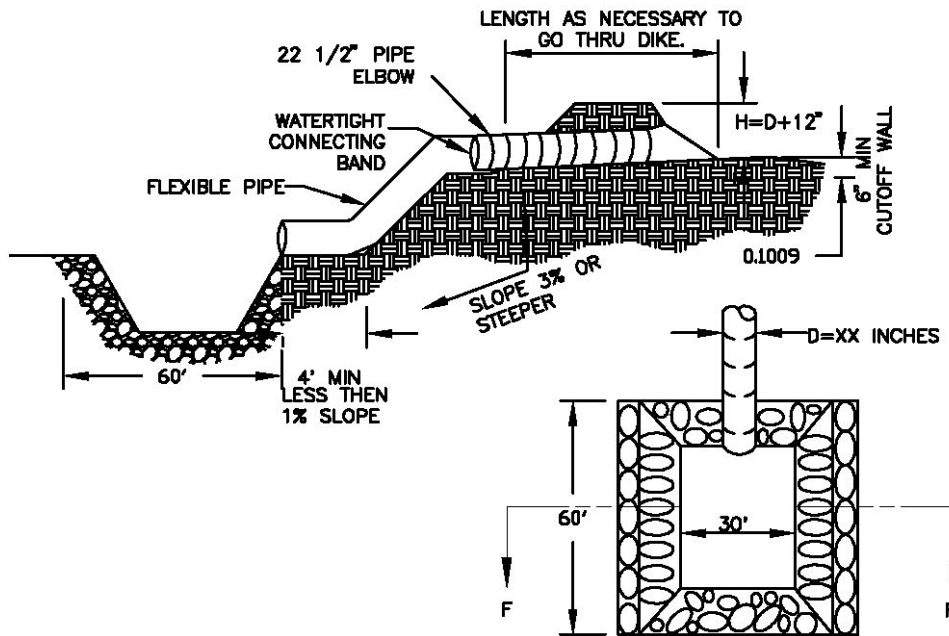
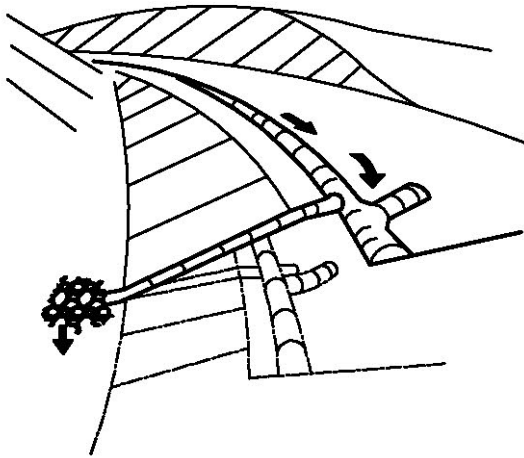
STANDARD No. D-617 SHEET 1 OF 1

CITY OF
AZTEC
PUBLIC WORKS
DEPARTMENT

CITY CONTRACTS
REFERENCE FOR OTHERS

NOTES: PIPE SLOPE DRAIN

1. THE FLEXIBLE PIPE SHALL BE THE SAME DIAMETER AS THE INLET PIPE AND SHALL BE CONSTRUCTED OF A DURABLE MATERIAL WITH HOLD-DOWN GROMMETS SPACED 10 FT. ON CENTER.
2. THE FLEXIBLE PIPE SHALL BE SECURELY FASTENED TO THE CORRUGATED METAL OR HIGH DENSITY POLYETHYLENE PIPE WITH METAL STRAPPING OR WATERTIGHT CONNECTING COLLARS.
3. THE FLEXIBLE PIPE SHALL BE STAKED AT 10 FT. CENTERS ALONG THE SLOPE USING MINIMUM 4 INCH SQUARE WOOD POSTS OR STANDARD STEEL POSTS DRIVEN 2 FT. MINIMUM INTO THE GROUND, OR EARTHEN THRUST BLOCK.
4. RIGID PIPE SHALL BE ANCHORED AT BENDS. ANCHORAGE SHALL CONSIST OF A MINIMUM OF 4 INCH SQUARE WOOD POSTS OR STANDARD STEEL POSTS DRIVEN 2 FT. MINIMUM INTO THE GROUND, OR EARTHEN THRUST BLOCK.
5. PAYMENT OF BASIN ITEMS ARE INCIDENTAL TO THE COST OF FLEXIBLE STORM DRAIN PIPE.



RIPRAP APRON PLAN



SECTION F-F
 NOT TO SCALE

CONSTRUCTION
 STANDARDS

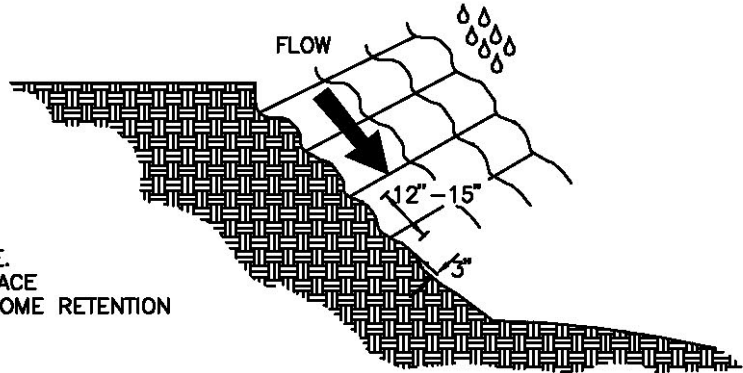
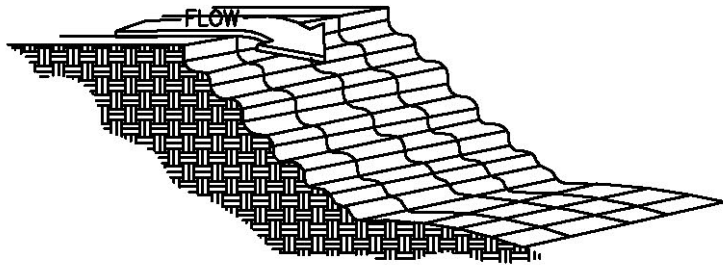
SLOPE DRAIN

STANDARD No. D-618 SHEET 1 OF 1

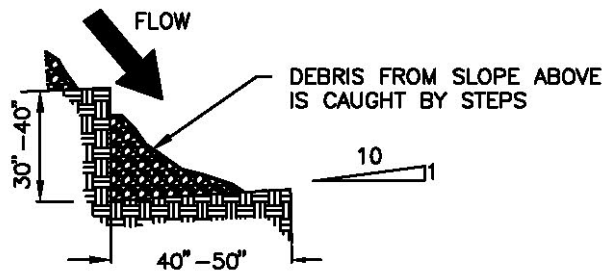
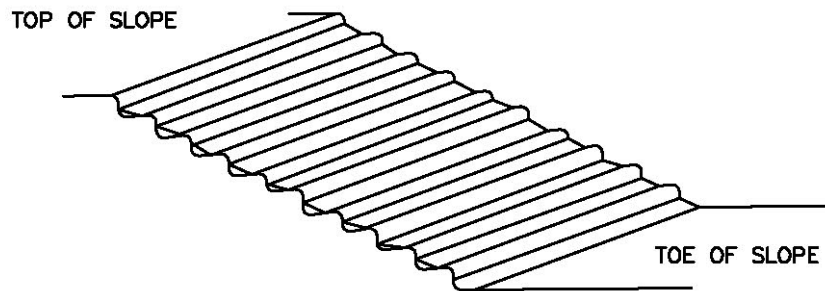
CITY OF
 AZTEC
 PUBLIC WORKS
 DEPARTMENT

CITY CONTRACTS

REFERENCE FOR OTHERS



GROOVING IS CUTTING FURROWS ALONG THE CONTOUR OF A SLOPE. IRREGULARITIES IN THE SOIL SURFACE CATCH RAINWATER AND PROVIDE SOME RETENTION OF LIME, FERTILIZER AND SEED.



STAIR-STEPPING CUT SLOPE

NOT TO SCALE

CONSTRUCTION
STANDARDS

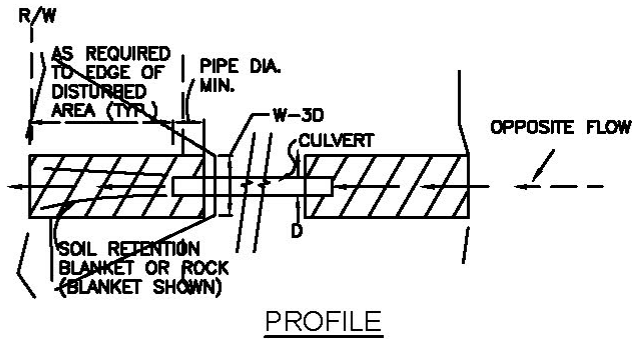
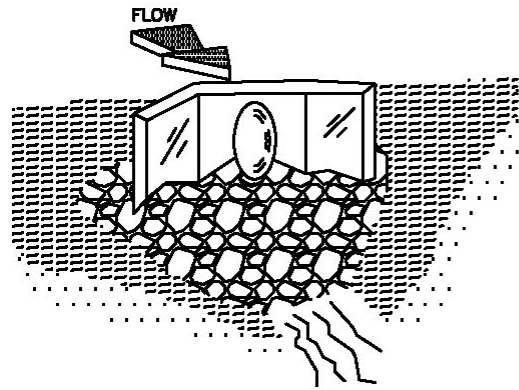
SURFACE ROUGHENING

STANDARD No. D-619 SHEET 1 OF 1

CITY OF
AZTEC
PUBLIC WORKS
DEPARTMENT

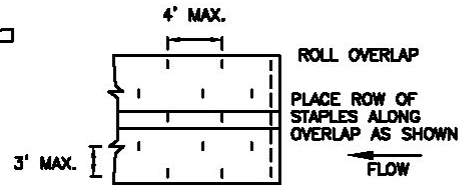
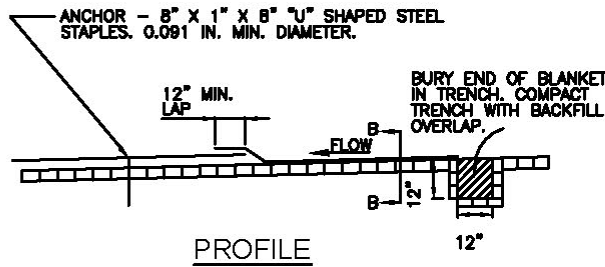
CITY CONTRACTS

REFERENCE FOR OTHERS

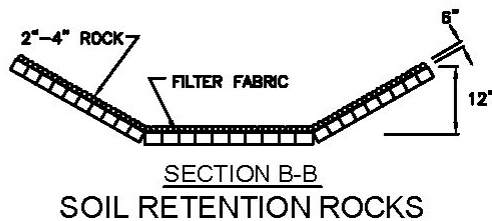
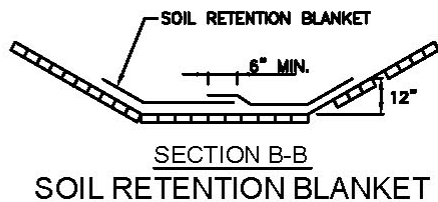


NOTES: CULVERT PROTECTION

1. WHEN CULVERT PROTECTION IS SPECIFIED, EITHER SOIL RETENTION BLANKETS OR SOIL RETENTION ROCK MAY BE PROVIDED.
2. THE CULVERT PROTECTION WIDTH REQUIRED SHALL BE IN ACCORDANCE WITH THESE DETAILS UNLESS SPECIFIED OTHERWISE.
3. THE SOIL RETENTION BLANKET INSTALLATION SHOWN OUTLINES MINIMUM REQUIREMENTS. MANUFACTURER'S RECOMMENDATIONS SHALL BE USED IF THEY ARE MORE STRINGENT.



USE 1" SPACING FOR STAPLES AT BEGINNING OF ROLL AND AT TRAVERSE OVERLAP.



NOT TO SCALE

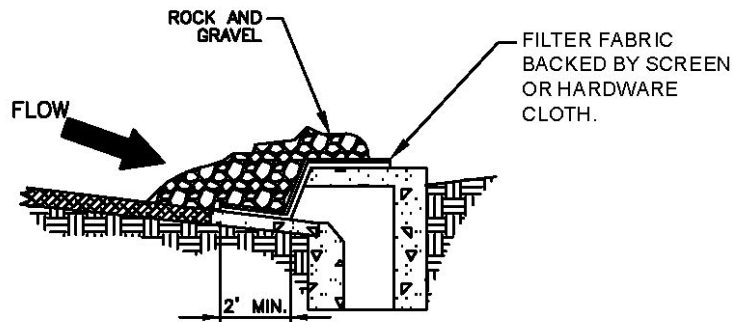
CONSTRUCTION
STANDARDS

CULVERT PROTECTION

STANDARD No. D-620 SHEET 1 OF 1

CITY OF
AZTEC
PUBLIC WORKS
DEPARTMENT

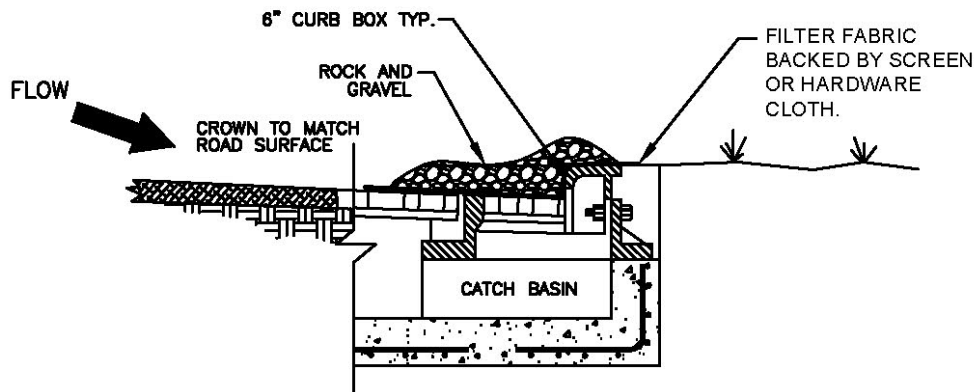
CITY CONTRACTS
REFERENCE FOR OTHERS



CURB OPENING

NOTES: GRAVEL INLET PROTECTION

1. THIS INSTALLATION IS FOR A TYPICAL CURB DROP INLET.
2. THE SPACING OF THE LONGITUDINAL BRACING SHALL NOT EXCEED 5 FT.



**TYPE II
CURB DROP INLET**

NOTE:
ALTERNATE PROTECTION OF CITY
STRUCTURES NEEDS APPROVAL
BY CITY ENGINEER

NOT TO SCALE

**CONSTRUCTION
STANDARDS**

CURB DROP INLET

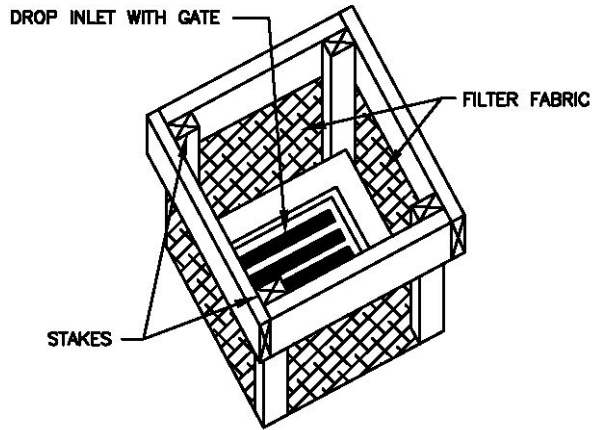
STANDARD No. D-621 SHEET 1 OF 1

**CITY OF
AZTEC**

**PUBLIC WORKS
DEPARTMENT**

CITY CONTRACTS

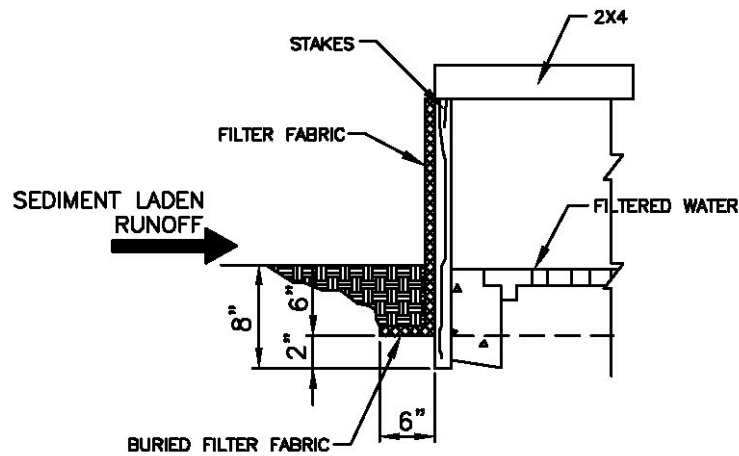
REFERENCE FOR OTHERS



TYPE I

NOTE:

WHEN SPECIFIED, ROCKS OR STRAW BALES CAN BE SUBSTITUTED FOR SILT FENCE.



NOTE:

ALTERNATE PROTECTION OF CITY STRUCTURES NEEDS APPROVAL BY CITY ENGINEER

NOT TO SCALE

CONSTRUCTION
STANDARDS

SURFACE INLET PROTECTION

STANDARD No. D-622 SHEET 1 OF 1

CITY OF
AZTEC
PUBLIC WORKS
DEPARTMENT

CITY CONTRACTS

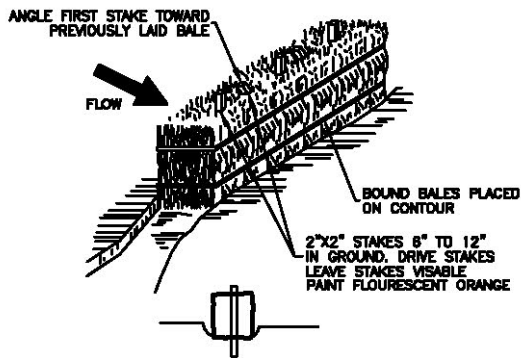
REFERENCE FOR OTHERS

NOTES: SILT FENCE

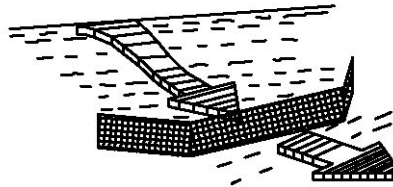
THE CONTRACTOR SHALL BE RESPONSIBLE FOR DETERMINING THE POST SPACING FOR SILT FENCES TO MINIMIZE MAINTENANCE.

1. POST SPACING SHALL BE 4 FT. MAXIMUM WITHOUT SUPPORTING FENCE, 10 FT. MAXIMUM WITH SUPPORTING FENCE.
2. POSTS FOR 4 FT. MAXIMUM POST SPACING SHALL BE 2 INCH SQUARE NOMINAL SIZE OR HEAVIER WOOD POSTS, OR STANDARD "T" OR "U" SECTION STEEL POSTS WEIGHING NOT LESS THAN 1 LB. PER LINEAR FOOT.

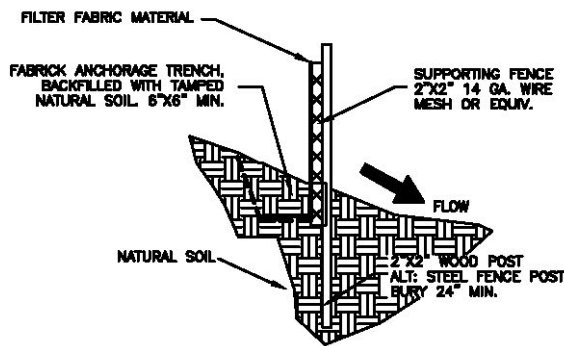
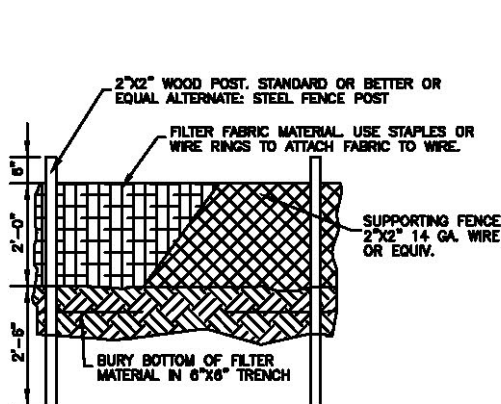
POSTS FOR 10 FT. MAXIMUM POST SPACING SHALL BE 4 INCH SQUARE NOMINAL SIZE OR HEAVIER WOOD POSTS, OR STEEL POSTS AS SPECIFIED ABOVE.
3. SUPPORTING FENCE SHALL BE WIRE MESH (14 GA. MIN., 1 INCH MAX. MESH OPENINGS), SNOW FENCE, PLASTIC FENCE, OR APPROVED EQUAL.
4. SUPPORTING FENCE SHALL BE FASTENED SECURELY TO POSTS WITH STAPLES OR WIRE TIES. FILTER FABRIC SHALL BE FASTENED SECURELY TO SUPPORTING FENCE WITH WIRE TIES SPACED AT 2 FT. CENTERS ALONG THE TOP AND MID-SECTION. WHEN A SUPPORTING FENCE IS NOT USED, FILTER FABRIC SHALL BE SECURELY FASTENED TO POSTS WITH STAPLES OR WIRE TIES.
5. WHEN SILT FENCE IS USED FOR CHECK DAMS INSTALLED IN DITCHES, A SUPPORTING FENCE SHALL BE PROVIDED, WITH MAXIMUM POST SPACING OF 10 FT.
6. STANDARD "T" OR "U" SECTION STEEL POSTS SHALL NOT BE USED WITHIN THE CONSTRUCTION CLEAR ZONE RECOVERY AREA.



SECTION
TYPE II
STRAW BALE OPTION



TYPE I
SILT FENCE OPTION



SILT FENCE

NOT TO SCALE

CONSTRUCTION
STANDARDS

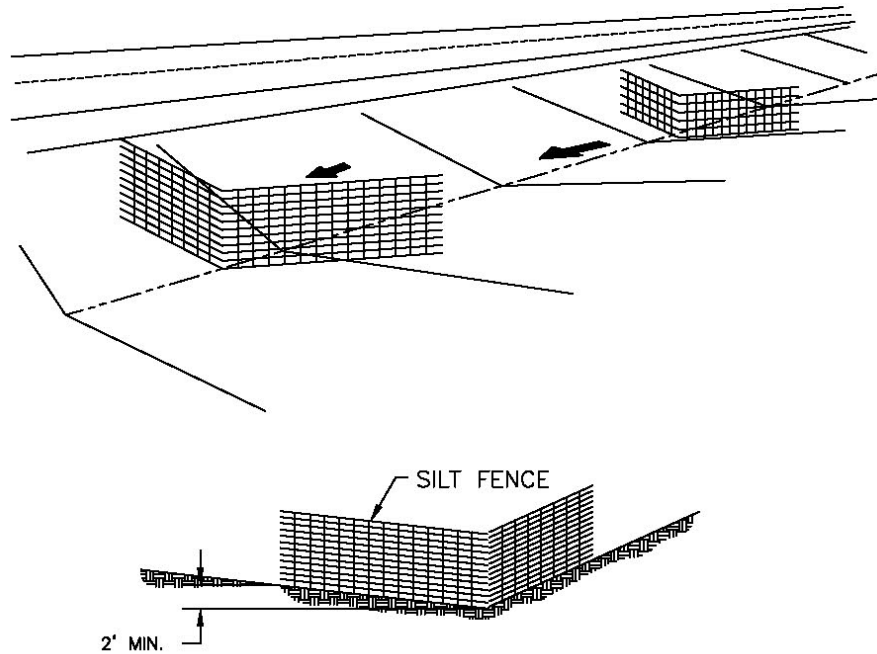
SILT FENCE

STANDARD No. D-623 SHEET 1 OF 1

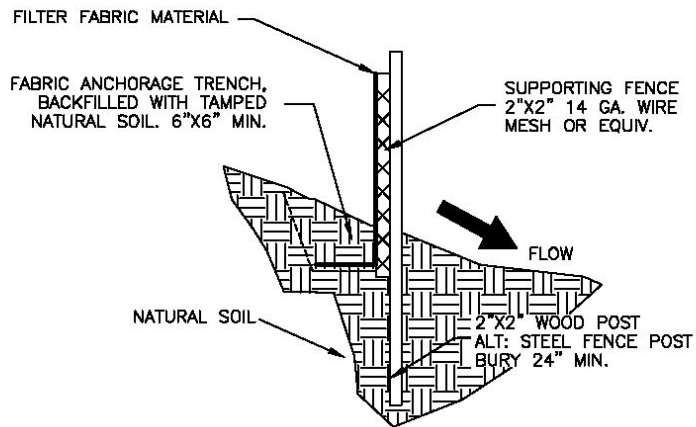
CITY OF
AZTEC
PUBLIC WORKS
DEPARTMENT

CITY CONTRACTS

REFERENCE FOR OTHERS



SECTION



DETAIL

NOT TO SCALE

CONSTRUCTION
STANDARDS

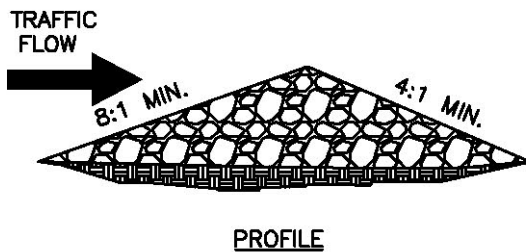
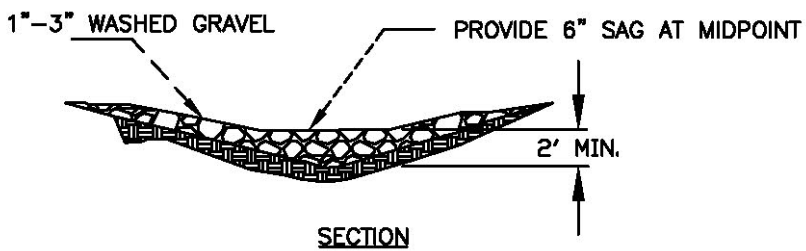
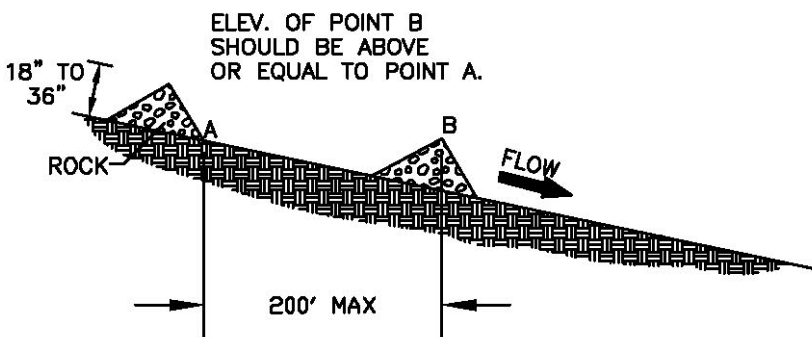
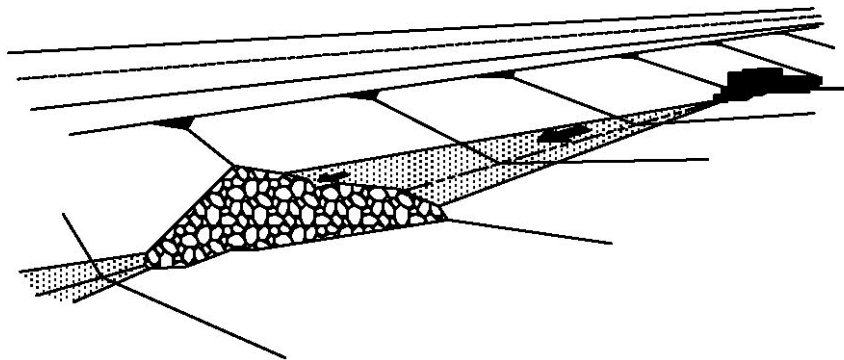
SILT FENCE

STANDARD No. D-624 SHEET 1 OF 1

CITY OF
AZTEC
PUBLIC WORKS
DEPARTMENT

CITY CONTRACTS

REFERENCE FOR OTHERS



NOT TO SCALE

CONSTRUCTION
STANDARDS

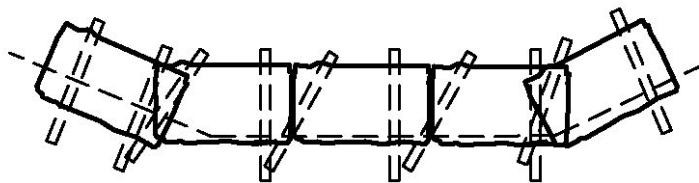
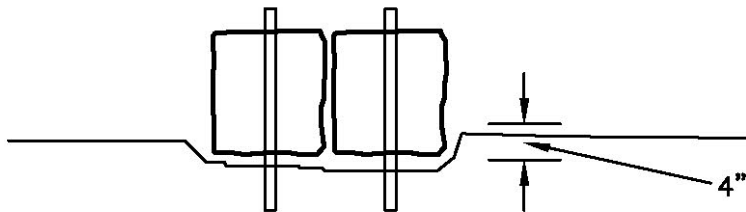
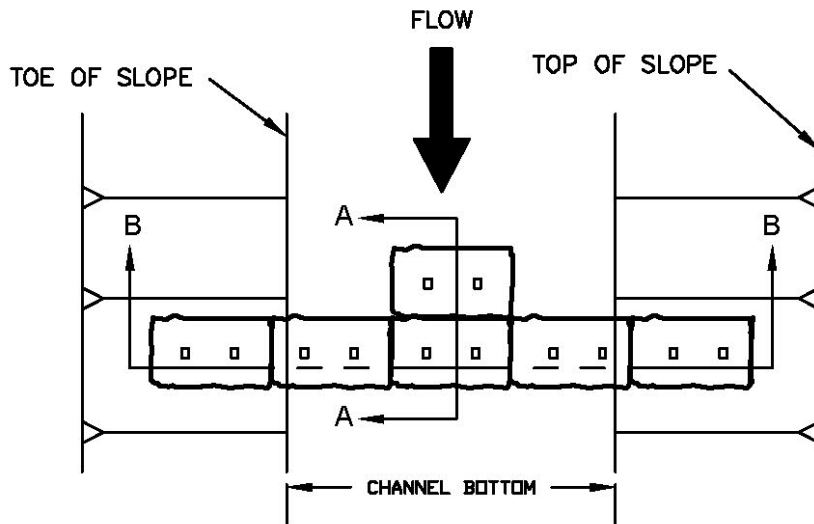
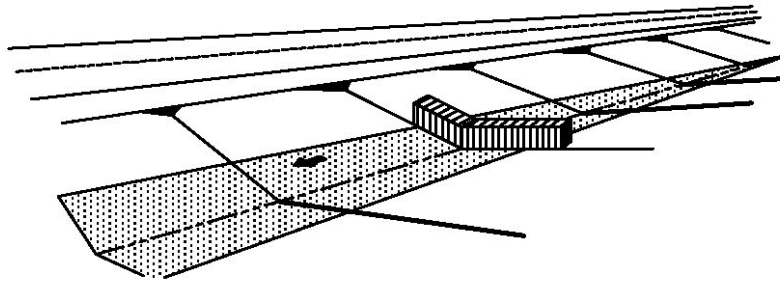
STONE DAM

STANDARD No. D-625 SHEET 1 OF 1

CITY OF
AZTEC
PUBLIC WORKS
DEPARTMENT

CITY CONTRACTS

REFERENCE FOR OTHERS



SECTION B-B

NOT TO SCALE

CONSTRUCTION
STANDARDS

STRAW BALE FENCE

STANDARD No. D-626 SHEET 1 OF 1

CITY OF
AZTEC
PUBLIC WORKS
DEPARTMENT

CITY CONTRACTS
REFERENCE FOR OTHERS

TEMPORARY EROSION &
SEDIMENT CONTROL MEASURES
(T.E.S.C.M.)

GENERAL NOTES:

1. THE SOIL RETENTION INSTALLATION DETAILS SHOWN FOR CULVERT PROTECTION SHALL BE USED FOR ALL TEMPORARY EROSION AND SEDIMENT CONTROL MEASURES UTILIZING SOIL RETENTION BLANKETS UNLESS OTHERWISE NOTED.
2. ROCK PLACEMENT USED IN THE TEMPORARY EROSION AND SEDIMENT CONTROL MEASURES SHOWN ON THESE SHEETS SHALL HAVE A MINIMUM THICKNESS OF 6 INCHES UNLESS OTHERWISE INDICATED.
3. ALL TEMPORARY EROSION AND SEDIMENT CONTROL MEASURES PLACED WITHIN THE CONSTRUCTION CLEAR ZONE SHALL BE INSTALLED WITH 8:1 SLOPES PARALLEL TO TRAFFIC AND 4:1 SLOPES PERPENDICULAR TO TRAFFIC.
4. SEDIMENT TRAPS SHALL BE CLEANED OF ACCUMULATED SEDIMENT WHEN APPROXIMATELY 50% FILLED.
5. CHECK DAMS SHALL BE CLEANED OF ACCUMULATED SEDIMENT WHEN THE DEPOSITS REACH APPROXIMATELY ONE-HALF THE HEIGHT OF THE CHECK DAM.
6. CULVERT PROTECTIONS SHALL BE INSTALLED UPON INITIATION OF EARTH ACTIVITIES AND MAINTAINED AS MUCH AS PRACTICAL UNTIL STABILIZATION IS COMPLETED AND ACCEPTED. CULVERT PROTECTIONS MAY BE REMOVED FOR PERIODS OF TIME AS REQUIRED DURING CONSTRUCTION TO COMPLETE ADJACENT IMPROVEMENTS.
7. THE CONTRACTOR MAY CONSTRUCT AN EARTH DIKE AS SHOWN, OR RELOCATE THE CHECK DAMS AS CONSTRUCTION PROGRESSES. NO DIRCT PAYMENT SHALL BE MADE FOR RELOCATION OF THE CHECK DAMS.

NOT TO SCALE

CONSTRUCTION
STANDARDS

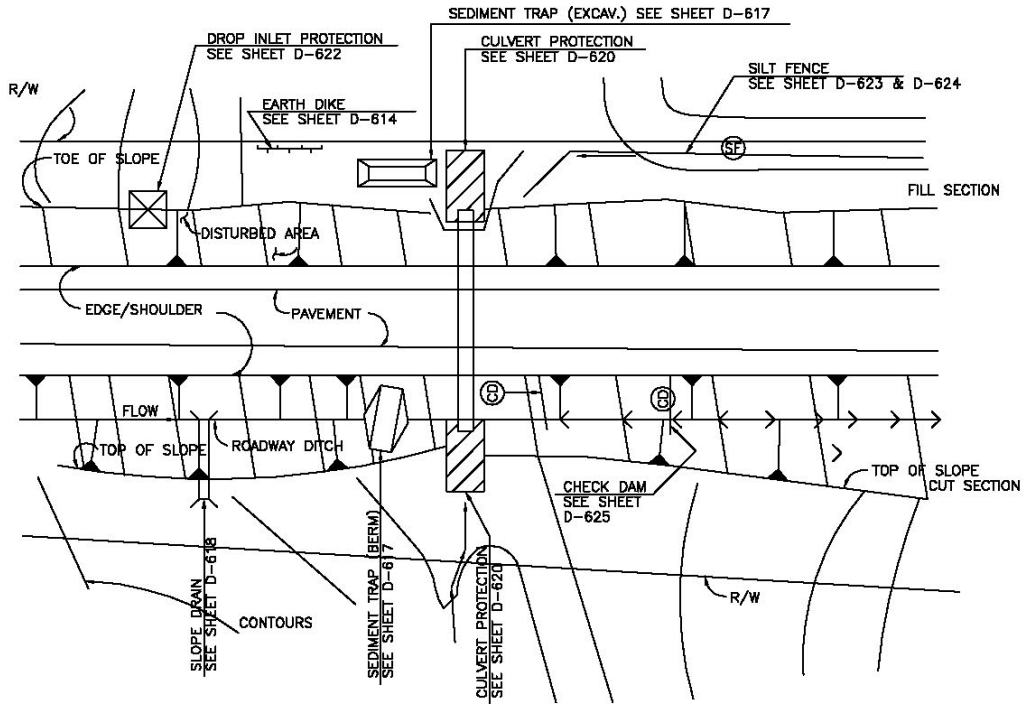
TEMPORARY EROSION
CONTROL LABELS

STANDARD No. D-627 SHEET 1 OF 2

CITY OF
AZTEC
PUBLIC WORKS
DEPARTMENT

CITY CONTRACTS

REFERENCE FOR OTHERS



TYPICAL USAGE OF SELECTED EROSION AND
SEDIMENT CONTROL MEASURES

STANDARD SYMBOLS FOR EROSION AND SEDIMENT CONTROL MEASURES

Silt Fence		Slope Drain		Sediment Trap,	
Straw Bale		Drop Inlet Protection		Sediment Trap,	
Earth Dike (Berm)		Culvert Protection		Sediment Basin	
Diversion Channel (Swale)		Check Dam		Triangular Sediment Filter Dike	

NOT TO SCALE

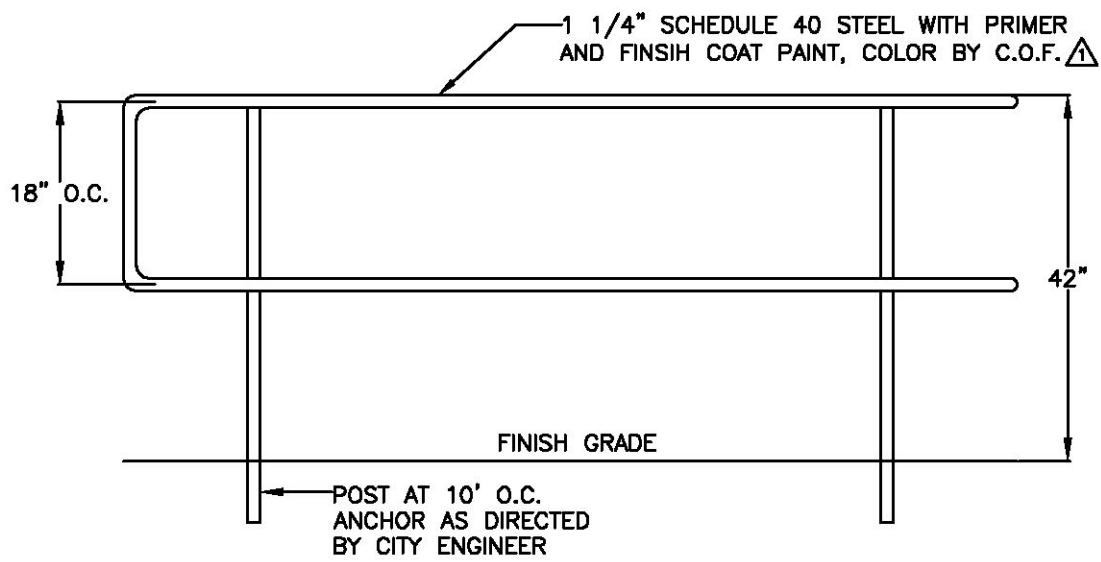
CONSTRUCTION
STANDARDS


TEMPORARY EROSION NOTES

STANDARD No. D-627 SHEET 2 OF 2

CITY OF
AZTEC

PUBLIC WORKS
DEPARTMENT



REV.	DATE
	01/26/06

CONSTRUCTION
STANDARDS

HAND RAILS

STANDARD No. D-630 SHEET 1 OF 1

CITY OF
AZTEC
PUBLIC WORKS
DEPARTMENT