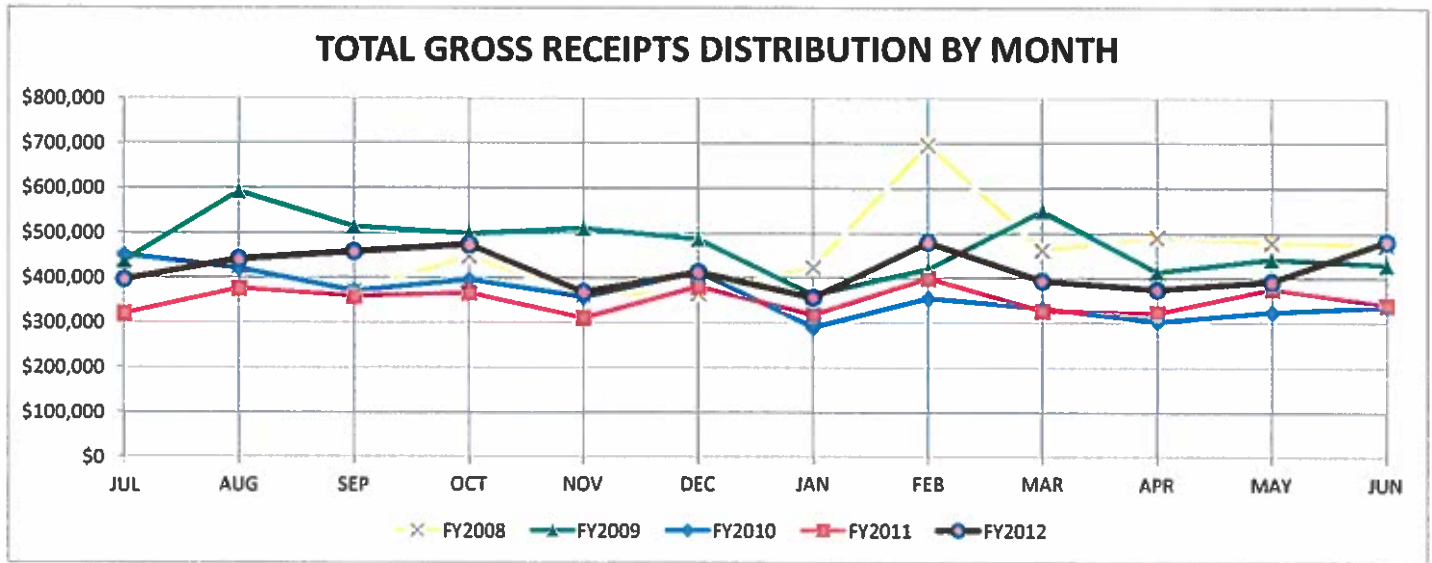


**AZTEC GROSS RECEIPTS TAX DISTRIBUTION
FISCAL YEAR 2012
THROUGH JUNE 2012**

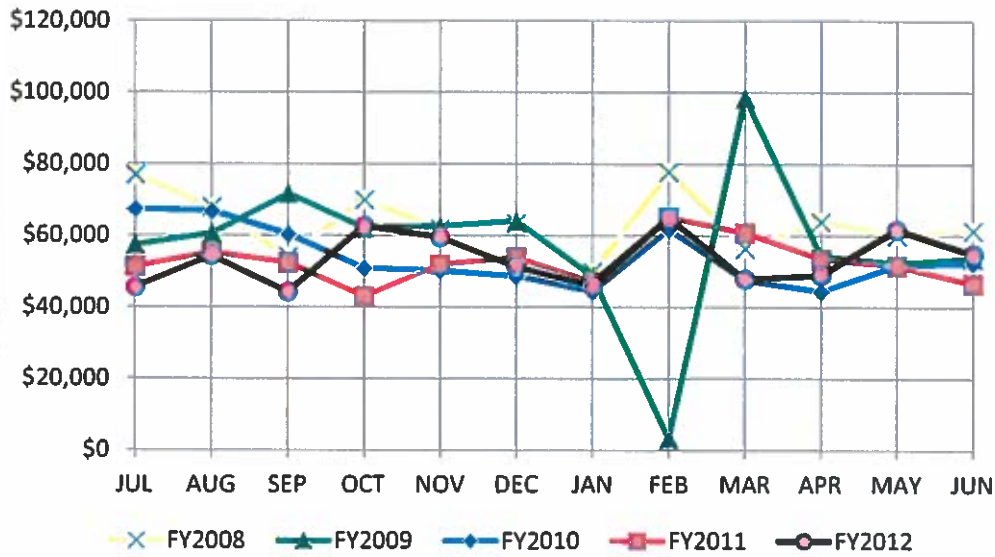


**CITY OF AZTEC
Gross Receipts Taxes
Statistical Report - Cash Basis**

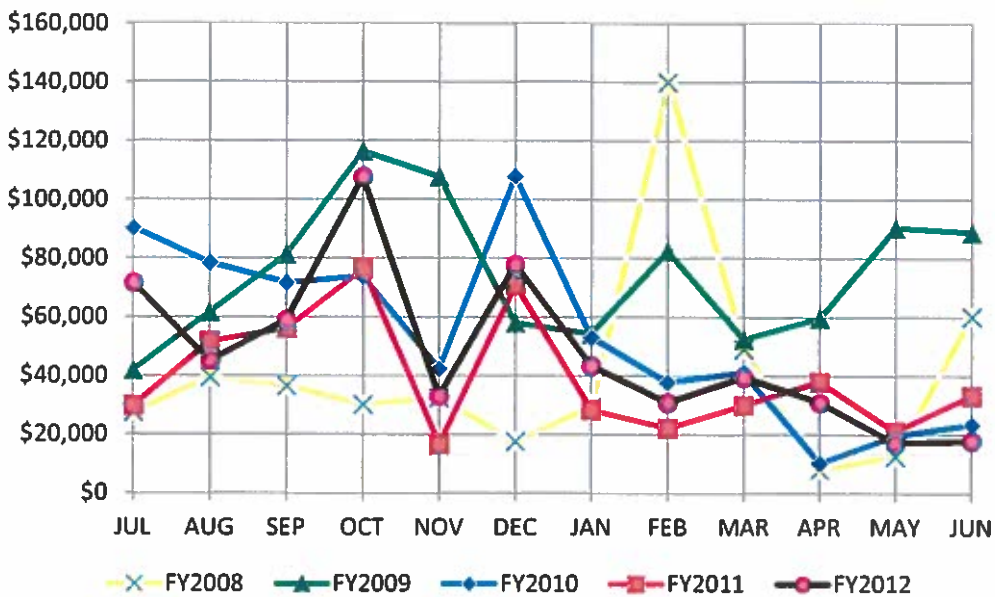
	FY06	FY07	FY08	FY09	FY10	FY11	FY12
Annual GRT Budget	\$ 3,381,912	\$ 4,051,961	\$ 4,065,000	\$ 4,370,000	\$ 4,283,723	\$ 3,543,103	\$ 3,682,088
JULY	316,417	267,588	440,597	436,145	449,956	319,399	395,533
AUGUST	381,074	419,782	423,899	590,883	420,169	375,381	441,546
SEPTEMBER	355,547	332,374	370,259	513,184	370,058	358,161	457,860
OCTOBER	279,861	342,936	447,466	497,607	394,764	365,875	473,857
NOVEMBER	334,980	371,613	360,545	509,511	356,256	309,736	367,685
DECEMBER	367,292	367,348	364,772	486,036	412,589	380,301	412,680
JANUARY	328,357	300,683	422,680	361,185	289,317	317,175	355,503
FEBRUARY	381,882	535,439	696,305	418,979	353,322	398,595	478,660
MARCH	339,647	355,743	462,031	548,399	332,045	325,973	392,893
APRIL	325,121	456,292	490,206	413,012	302,073	321,280	373,715
MAY	347,431	420,719	478,734	441,780	323,269	374,928	391,586
JUNE	334,432	330,909	473,319	429,076	334,725	339,183	481,052
Total Distribution	\$ 4,092,040	\$ 4,501,428	\$ 5,430,814	\$ 5,645,797	\$ 4,338,542	\$ 4,185,987	\$ 5,022,570
AVERAGE DISTRIBUTION	\$ 341,003	\$ 375,119	\$ 452,568	\$ 470,483	\$ 361,545	\$ 348,832	\$ 418,548
CHANGE IN AVERAGE FROM PREVIOUS FISCAL YEAR	10.6%	10.0%	20.6%	4.0%	-23.2%	-3.5%	20.0%
Difference between Budget to Actual	\$ 710,128	\$ 449,467	\$ 1,365,814	\$ 1,275,797	\$ 54,819	\$ 642,884	\$ 1,340,482
Gross Receipts Tax Rate	7.625%	7.625%	7.625%	7.625%	7.625%	7.750%	7.750%

**AZTEC GROSS RECEIPTS DISTRIBUTION
FISCAL YEAR 2012
THROUGH JUNE 2012
SELECTED REPORTING SECTORS**

**GROSS RECEIPTS MONTHLY DISTRIBUTION:
RETAIL**

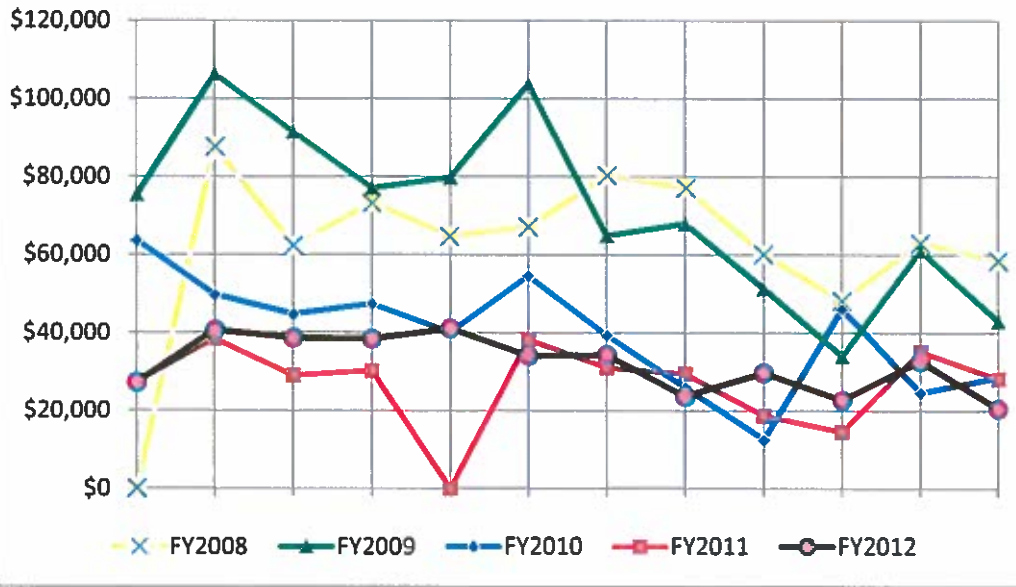


**GROSS RECEIPTS MONTHLY DISTRIBUTION:
CONSTRUCTION**

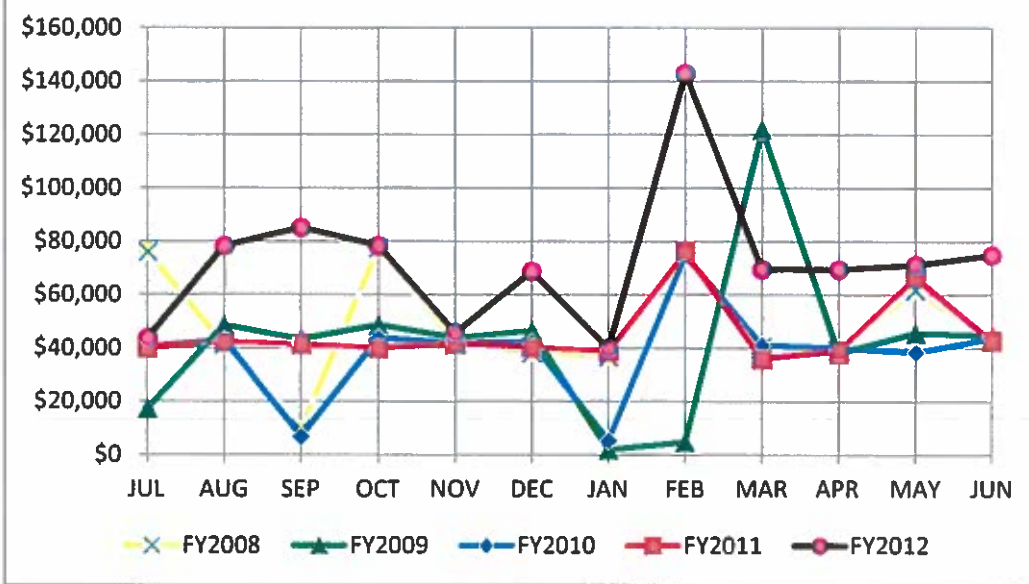


**AZTEC GROSS RECEIPTS DISTRIBUTION
FISCAL YEAR 2012
THROUGH JUNE 2012
SELECTED REPORTING SECTORS**

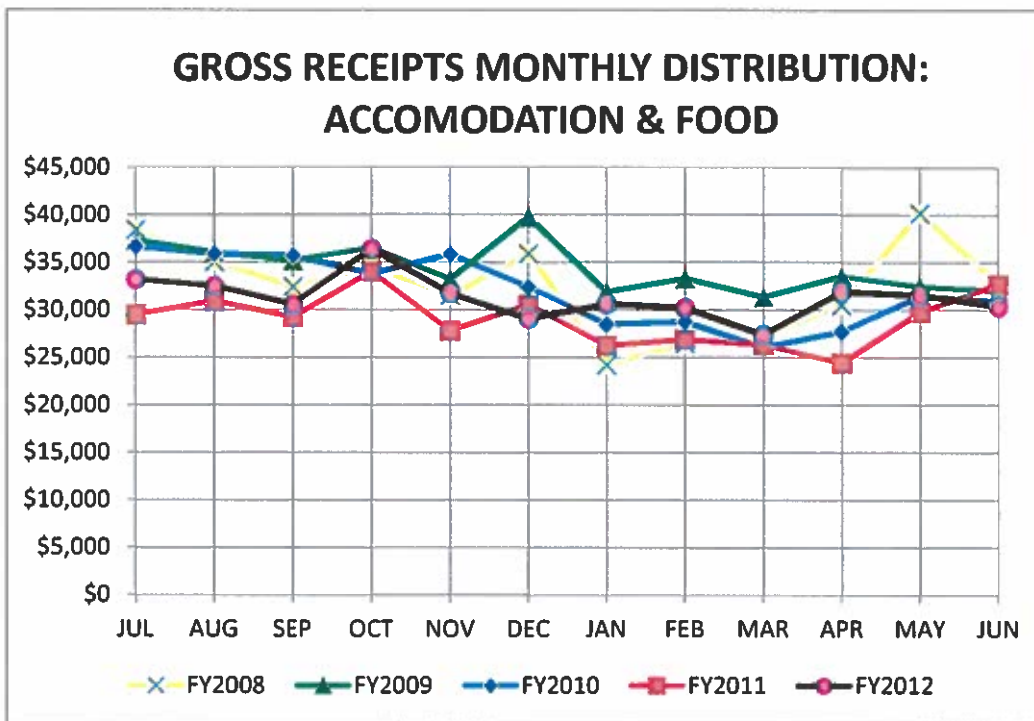
**GROSS RECEIPTS MONTHLY DISTRIBUTION:
MINING**



**GROSS RECEIPTS MONTHLY DISTRIBUTION:
GROCERIES**



**AZTEC GROSS RECEIPTS DISTRIBUTION
FISCAL YEAR 2012
THROUGH JUNE 2012
SELECTED REPORTING SECTORS**



**CITY OF AZTEC
FISCAL YEAR 2012
LODGERS TAX GASOLINE TAX COLLECTIONS
THROUGH MAY 2012**

