

Parks & Recreation Signage Plan 2024

Cap Walls
Park

HAR... Park Hours... Please comply with All Posted Rules and City Regulations

YOU CAN DO THE FOLLOWING

- Enjoy the park and have a good time!
- Observe and participate in activities, events and programs offered by the City Parks and Recreation Department. Such activities include:
 - Exercise walking, jogging, and riding bicycles around the fields is permitted. Please be considerate of others.
 - Pets are allowed but must be leashed at all times. Pet waste must be picked-up and removed immediately.
 - Help Keep Your Park Clean. Numerous trash receptacles are provided, please help keep your park clean, leaving it nice for the next visitor.

YOU CANNOT DO THE FOLLOWING

- Alcohol or Drugs
- Camping or Camp Fires
- Drive on "No" Sidewalks, Paths or Commercial Vehicle routes to prevent:
 - Drifting, Heavy Gel Balls or Heavy
 - Shooting or Stomping
 - Use of Firearms
 - Use of Glass Containers
 - Use of Motor Vehicles (except Parking)
- Overnight Parking
- Destroying all-city facilities on public land
- Towing Hauls or Other Check-out Substances/Items or Other Items
- Use of Firearms or Other Weapons
- Use of Glass Containers
- Use of Motor Vehicles (except Parking)

For emergencies, please call emergency dispatch at 911.

To report problems or damages contact the Parks & Recreation Department, 261 West Monday through Thursday from 7:00 am to 6:00 pm or the After Hours Dept at 261-4333.

For details and additional rules on park use see Chapter 22, Article 1, Use of Parks & Recreation of the Austin City Code at www.austincity.gov



Riverside
PARK

Table of Contents

	<u>Page</u>
Section 1. Introduction	3
Introduction	3
Objectives	3
Signage Program	4
Section 2. Specific Signage Needs for Parks	8
Cap Walls Park	8
Florence Park	9
Hartman Sports Complex.....	10
Kokopelli Park.....	12
Main Avenue Courtyard	13
Memorial Rose Garden.....	14
Minium Park.....	15
Municipal Complex.....	16
Rio de Animas Park	27
Riverside Park.....	28
Tiger Park	29
Aztec Disc Golf Course	31
Aztec Motocross	32
Kart Canyon Speedway	33
Section 3. Trail Signage.....	33
Animas River North Pedestrian Bridge	34
Riverside-Hartman Park Pedestrian Bridge	35
North Main / Rios de Animas Park Trail Connection	35
Mountain View Trails.....	35

Section 1. Introduction

Introduction

Unlike motorist or bicyclist signage, there is no national standard for pedestrian signs. The nature of being a pedestrian in contrast to a motorist or bicyclist, means that the pedestrian can approach the sign more closely, and take as much time as they want to read it. Therefore a pedestrian sign can contain a lot more detail than is possible with a sign directed at motorists or bicyclists. Pedestrian signs are usually in the form of the following:

1. Directional. Directional signs are usually simple signs with an arrow indicating direction, a destination name, and sometimes distance to the destination.
2. Maps. Maps usually showing the pedestrian their location, and the surrounding streets and destinations.
3. Informational. Informational signs tend to be highly customized to reflect local conditions, historic importance, cultural significance, architectural styles, educational, regulatory, natural or man-made landscapes, etc.

Pedestrian signs need to be large enough to be read and contain helpful information, without causing visual problems such as sign clutter.

Objectives

The City of Aztec parks have many challenges in addressing every signage need due to the various uses and diverse settings of the parks and trails network system. The parks as defined in the city's Parks & Recreation Enhancement Plan 2012, varies from mini-parks to neighborhood and community parks with several various sport facilities present as well. With these challenges, an effective signage system must be guided by a series of goals and objectives. These objectives are listed below but in no particular order.

- Design a unified look for signage at the parks;
- Create flexibility within the context of a unified system;
- Use materials and styles that relate to the place and the signage types throughout the parks and trails;
- Create a signage program that is cost efficient in fabrication, implementation, and maintenance;
- Facilitate efficient pedestrian, cyclist, and vehicular access throughout the parks and trails;
- Create a system that can be implemented in phases; and
- Create hierarchy of signage types for various applications.

Signage Program

This conceptual signage program provides an overview of the proposed signage system for the City of Aztec Parks and Recreation System. This calls for a comprehensive approach in which the use of typefaces, graphic messages and colors are carefully considered. From roadway and on-site directional signage to amenity identification, the signage program should act as one cohesive system and help to create a sense of place. It should provide concise and relevant information at key decision making points. It is the first layer of experience when a person visits a park or trail system.

Sign Type

The signage program addresses the following sign types to ensure that the public is provided adequate information when interfacing with the park or trail system:

- Regulatory Signs (Rules Panel, Prohibitive Signs)
- Vehicular Signs (Parking, Directional, Accessibility, Traffic Control)
- Trail Signs (Usage, Directional, Etiquette, Informational)
- Maps (Parks and Trails)
- Interpretive (Historical, Cultural, Natural Resources)
- Identification (Structure Names or Numbers)

Sign Layout

The following grid system (Figure 1.1) is meant to provide a standard format to guide the layout of margins, borders, text, arrows, and pictograms on directional signage. The grid format follows closely the system established by the National Park Service to provide optimum legibility and consistency. All directional sign panels should follow the graphic layout provided below. However, there may be instances where deviation from the guidelines may be necessary. The grid sizes are proportional to the specified capital letter height for each sign, therefore any changes in text size will also require change in grid size. This is meant to maintain uniform relationships between text, 'white-space', and panel size.

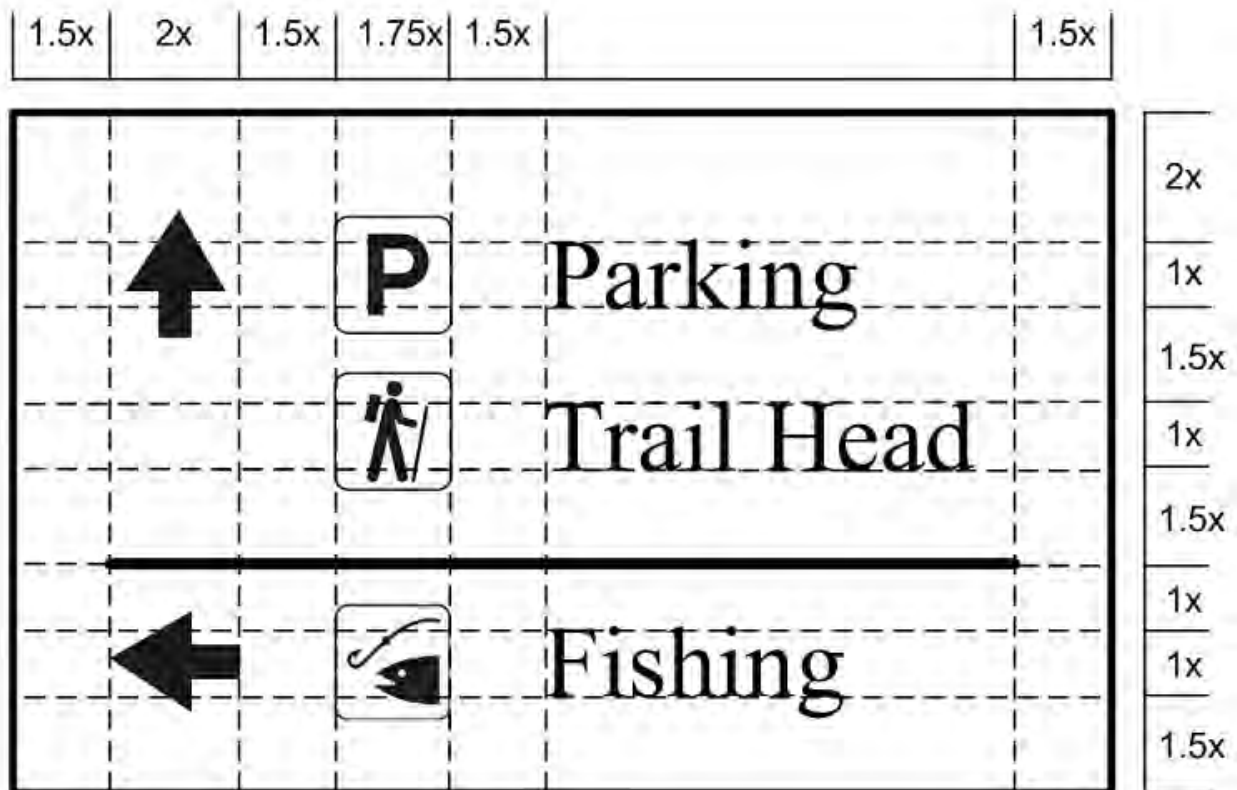


Figure 1.1. Directional Sign Layout.

Standard Fonts

The application of two different tpestyles is recommended for use in the signage system. The use of a sans serif typeface and serif typeface shall be used.

1. The serif typestyle “Times New Roman” is to be used as the primary signage font for formal headings for locations, directions, services, etc. The serif style of this lettering is meant to be easily readable.
2. The sans serif typestyle “Aerial” is to be used for general body copy, and secondary header information. The style of sans serif lettering is to provide maximum readability for the listings, information, or postings on signs, which may range in contrast and size.

Standard Colors

Color is specified to balance visitor messaging requirements and support the identity of the Parks and Recreation System. Sign panels shall be white with black lettering or black with white lettering depending upon purpose and location. Exception to this shall be postings of hazards or warnings in which case backgrounds shall be red with white lettering. If other background colors are to be utilized due to purpose or location then all

text, arrows, pictograms and borders shall be in contrast color (e.g. purple background with white letters).

Standard Pictograms

Symbols for park signage should use the National Recreation Symbols, designed for the U.S. Army Corps of Engineers, and refined and augmented by the Society for Environmental Graphic Design (SEGD). This system includes 112 symbols and is considered an international pictographic language, therefore deviation from standard icons is not recommended. A sample of common National Recreation Symbols is provided below for reference and can be displayed with black background and white icon image or white background with black icon image (Figure 1.2).



Figure 1.2. Sample of National Recreation Symbols.

Directional Arrows

There is only one style of directional arrow recommended for the signage system. The arrow is sized as a proportion of the primary legend capital letter which shall be equal to 1.5x the height of the primary legend capital letter. A scale and alignment guide is provided in Figure 1.1.

Sign Structure

Signage will be displayed in various forms depending upon sign type, content and location. There will be five primary ways that signage will be installed:

1. Direct Mount. Signage that is relatively small, usually less than 4 sq ft and may be directly affixed to structures. Direct mounting is typical for identification signage (e.g. pavilion number, field name or number, regulatory, etc.)
2. Post Mount. Signage that normally ranges from 1 to 8 sq ft and location requires some form of support structure not available at the location. Post mounting of signs is feasible for directional signage, some regulatory/prohibitive signage, parking, etc. Depending upon panel size, post mount may require single or double posts.
3. Kiosk. A sign structure with side posts and roof. The city has developed a style for such kiosks which are metal. Where possible, kiosks built in-house will be utilized to display informational panels either in the size of 3 ft by 3 ft or 4 ft by 4 ft. The color scheme of the kiosk structure shall be black to minimize graffiti markings.

Kiosks will minimally contain regulatory information and map information of the city. Depending upon size and location, a kiosk may contain interpretive information (cultural, historical, or natural) or other relevant public information. If kiosks are to be located in remote or along trails, a similar design with wooden construction may be utilized.

4. Monument. A formal sign structure intended for gateways and entrances to parks. Construction of such monuments will be dependent upon the park and location. The support structure may consist of double posts with landscaped bed or some other formal construction such as brick, stone, or cobble. To date, the city has built several monument signs, one such monument at Cap Walls Park (Figure 1.3.)
5. Trail Posts. The city is looking at the use of Carsonite composite markers for trail markings. Such posts are built from composite materials which can withstand impacts, harsh weather, corrosive elements, UV exposure and allows for customizing each post with decals which can be manufactured locally.



Figure 1.3. Example of Monument Sign

Section 2. Specific Signage Needs for Parks

Cap Walls Park

Cap Walls Park is a neighborhood park and does not necessarily need off-site directional signage. However, signage is required within the park and current signage locations and type are shown in Figure 2.1. There is no future signage deemed necessary or proposed for Cap Walls Park.



Figure 2.1. Cap Walls Park.

<u>Signage</u>	<u>Status</u>	<u>Condition/Recommendation</u>
1 Monument Entrance Sign	Built (YCC 2016)	Excellent
2 Pavilion Number	Installed (YCC 2016)	Good
3 Playground Rules.	Installed (YCC 2016)	Good

Florence Park

Florence Park is another neighborhood park and does not necessarily need off-site directional signage. Signage has been added to the park since 2011 (Figure 2.2).



Figure 2.2. Florence Park.

	<u>Signage</u>	<u>Status</u>	<u>Condition/Recommendation</u>
1	Entrance Sign ⁽¹⁾	Installed (2016)	Excellent (Replaced in 2023)
2	Park Rules	Installed (2017)	Good
3	Tennis & Basketball Court Rules	Installed (2017)	Good
4	Playground Rules	Installed (2015)	Good

(1) This a double sided panel sign. The Florence Park (south facing pane) and the Historic Downtown (north facing panel) were replaced in 2023.

Hartman Sports Complex

Hartman Sports Complex is a sports complex which contains seven baseball fields, three soccer fields, a YAFL field, and skateboard park.

Given its community use and awareness, it does not seem to need off-site directional signage (Figure 2.3).



Figure 2.3. Hartman Sports Complex

	<u>Signage</u>	<u>Status</u>	<u>Condition/Recommendation</u>
1-7	Field Numbers	Good	
8	Entrance Sign	Installed (YCC 2014)	The sign structure is excellent; however the raised lettering and logo panels need to be removed. It is scheduled for repainting background and painting new lettering on both sides.

9	Informational Kiosk		
	• Fitness Tips	Original	Fair, minor panel damage.
	• City Map	Replaced in 2021	Excellent
	• Rules	Replaced in 2021	Excellent
10	Skateboard Park Rules	Fair	Minor weathering and vandalism has occurred. Additional sign should be placed within the interior of the skateboard park.

Kokopelli Park

Kokopelli Park is another neighborhood park that was constructed 2013. Proposed signage is required within the park and suggested signage location and type is shown in Figure 2.4.

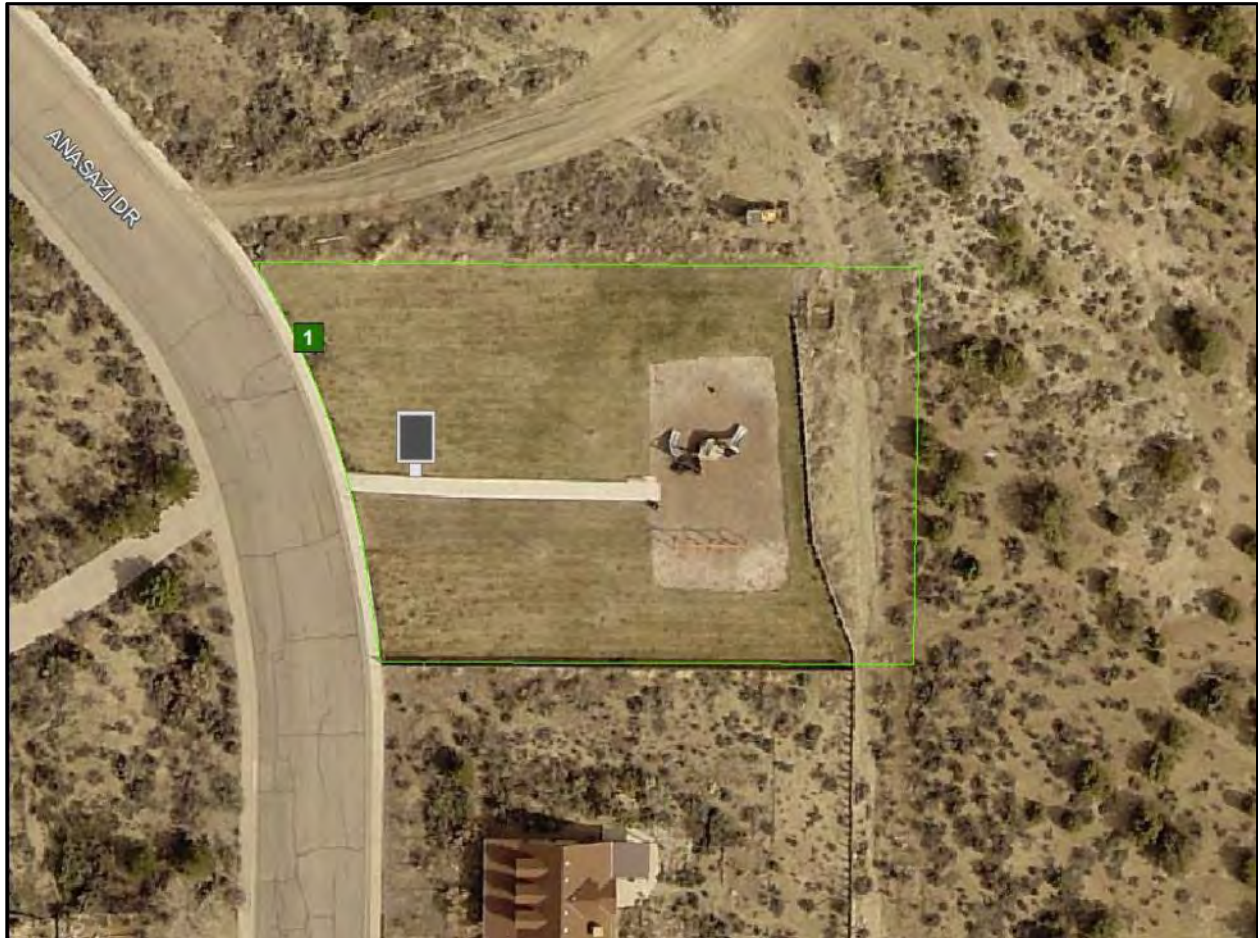


Figure 2.4. Kokopelli Park.

<u>Signage</u>	<u>Status</u>	<u>Condition/Recommendation</u>
1 Entrance Sign	Proposed	New park gateway sign in the form of a simple monument sign.

Main Avenue Courtyard

Main Avenue Courtyard is considered a special use area which is located in historic downtown. The courtyard is undergoing a major refurbishment (March 2024) which involves removal of pavers, removal and installation of new utility infrastructure, removal and installation of new irrigation, and stamped concrete on the new walking surface. The existing dedication plaque is being refurbished and will be re-installed once the entire courtyard refurbishment is complete.



Figure 2.5. Main Avenue Courtyard.

	<u>Signage</u>	<u>Status</u>	<u>Condition/Recommendation</u>
1	Dedication Plaque	Fair	Plaque was removed during reconstruction of the courtyard. It will be refurbished and installed once the courtyard reconstruction is complete.

Memorial Rose Garden

The Memorial Rose garden is considered a mini-park which contains several special features. Built in 1970 by the Desert Planters Garden Club of Aztec it was dedicated to the City in 1972. Over its lifetime, the garden has been maintained by the garden club on a volunteer basis. Memorial monument signage with names of service members (#1 - #4) exists and in relatively good condition. In 1985, the Blue Star Memorial By-Way Marker (#5) was added which honors the nation's armed forces, past, present, and future. An informational kiosk or panel sign (#6) has been proposed adjacent to the RV dump service to provide a map of the city and recreational areas around the city for RV travelers.



Figure 2.6. Memorial Rose Garden.

<u>Signage</u>	<u>Status</u>	<u>Condition/Recommendation</u>
1-4 Memorial Wall	Good	Monitor name panels annually.
5 Blue Star Marker	Good	Refurbished in 2018.
6 Info Kiosk / Panel	Proposed	Install info panel/kiosk with city and recreational map.

Minium Park

Minium Park is classified as a community park and has undergone major upgrades such as the addition of a water splash park (2011), new restrooms (2012), new playground system (2017), and shade structures (2018). Given its central location and abundant use, it does not seem to need off-site directional signage.



Figure 2.7. Minium Park.

	<u>Signage</u>	<u>Status</u>	<u>Condition/Recommendation</u>
1-2	Pavilion Numbers	Good	
3	Main Ave Kiosk	Excellent	Used to post event/seasonal posters. The two kiosks were refurbished in 2024.
4	Info Kiosk	Excellent	Kiosk structure is in good condition. Sign panels (CPR & Rules) were replaced in 2022.
5	Old Sorehead Sign	Fair	Sorehead images were replaced in 2021. However, two of the faces are starting to peel away.
6	Info Kiosk	Proposed	Recommend an info kiosk with general park rules and city map.

Municipal Complex

The Municipal Complex is considered a special use area which consists of a variety

O
f
c
i
t
y
o
f
f
i
c
e
s
a
n
d
s
e
r
v
i
c
e
s
. S
e
v
e
r
a
l
b
u
i
l
d
i
n
g
s
h
a

v
e
l
e
t
t
e
r
s
i
g
n
a
g
e
i
n
s
t
a
l
l
e
d
o
n
b
u
i
l
d
i
n
g
s
t
o
i
d
e
n
t
i
f
y

t
h
e
d
e
p
a
r
t
m
e
n
t
o
r
s
e
r
v

r
e
d
s
i
g
n
a
g
e
i
s
u
n
i
f
o
r
m
i
n
s
t
y
l
e
o
r
a
p
p
e
a
r
a
n
c
e
a
n
d
i
t
i
s

r
e
c
o
m
m
e
n
d
e
d
t
h
a
t
s
u
c
h
s
i
g
n
a
g
e
b
e
r
e
p
l
a
c
e
d
o
v
e
r
t
i
m
e
s

o
t
h
a
t
a
l
l
b
u
i
l
d
i
n
g
s
a
r
e
u
n
i
f
o
r
m
a
l
l
y
l
e
t
t
e
r
e
d
.

In 2015, informational kiosks were installed at the major pedestrian entrances into the

m
u
n

i
c
i
p
a
l
c
o
m
p
l
e
x
(

1
-

4
)
.
T
h
e
e
n
t
r
a
n
c
e
s
i
d
e
c
o
n
t
a
i
n
s
a

c
o
m
p
l
e
x
m
a
p
o
n
a
l
u
m
i
n
u
m
p
a
n
e
l
i
n
g
m
a
n
u
f
a
c
t
u
r
e
d
a
n
d
i
n

s
t
a
l
l
e
d
i
n
2
0
2
0
.

Three additional wall mounted kiosks (#5 - #7) are located at City Hall, Utility Office,

a
n
d
C
o
u
r
t
s
B
u
i
l
d
i
n
g
.
T
h
e
s
e
k
i
o
s
k
s

f
u
n
c
t
i
o
n
f
o
r
p
u
b
l
i
c
n
o
t
i
c
e
s
a
n
d
a
r
e
u
p
d
a
t
e
d
p
e
r
i
o
d
i
c

A municipal complex monument wall (#8) was built in 2013 and refurbished in 2023.



Figure 2.8. Municipal Complex.

	<u>Signage</u>	<u>Status</u>	<u>Condition/Recommendation</u>
1-4	Info Kiosk	Good	Complex maps were replaced with aluminum print.
5-7	Info Kiosk	Good	Kiosks for public notices. Notices posted as needed.
8	Monument Sign	Good	City logo panel was removed, structure was repainted in 2023.

Rio de Animas Park

Rio de Animas park is considered a conservancy area and is intended to remain mostly in a natural state. The park is characterized by a remote parking area and trail which connects with the north pedestrian bridge across the Animas River to the Aztec Ruins National Monument.

Signage is currently limited to informational panels along the pedestrian bridge which were purchased and installed by the Aztec Ruins National Park. The panels provide cultural and natural information on the Old Spanish trail and fauna in the area..



Figure 2.9. Rio de Animas Park.

	<u>Signage</u>	<u>Status</u>	<u>Condition/Recommendation</u>
1	Info Kiosk	Excellent	Info Panel - Armijo Returns Triumphant
2	Info Kiosk	Excellent	Info Panel - At Home on the River
3	Info Kiosk	Excellent	Info Panel - A River's Ancient Gift
4	Info Kiosk	Excellent	Info Panel - A Daring Plan

Riverside Park

Riverside park is considered a community park and due to its locale could use at least one off-site directional sign at the intersection of Light Plant Road and W. Aztec Blvd. In 2023 as part of the YCC project, a monument entrance sign (#1) stating "Riverside Park" was built.



Figure 2.10. Riverside Park.

	<u>Signage</u>	<u>Status</u>	<u>Condition/Recommendation</u>
1	Entrance Sign	Excellent	Monument sign was built in 2023.
2-3	Pavilion Numbers	Good	Pavilion #1 is missing ID panels.
4-7	Exercise Info	Poor-Fair	Each exercise station has an informational sign. Many of the sign panels need replacing.
8	River Access	Fair	Sign is in fair condition, probably needs replacing in another 2-3 years.
9	Pickleball Court Rules	Proposed	Sign panel with pickleball court rules is required.

An informational kiosk with park rules and city maps somewhere on the east side of the fishing pond would prove beneficial.

Tiger Park

Tiger Park is a community park which incorporates Reservoir #3 (aka Tiger Lake). No directional signage is required due to its high visibility. All signage was installed when the park was constructed in 2012. No additional signage is proposed.



Figure 2.11. Tiger Park.

	<u>Signage</u>	<u>Status</u>	<u>Condition/Recommendation</u>
1-4	Pavilion Numbers	Good	Each pavilion has 2 ID panels at each end.
5	Entrance Sign	Good	
6	Info Kiosk	Fair	Kiosk structure is in good condition. Sign panels (Rules & Fishing) have faded and require replacement.
7	Info Kiosk	Fair	Kiosk structure is in good condition. Sign panels (Water & City Map) have faded and require replacement.
8	Mileage	Fair-Poor	Mileage markers placed every 0.10 mile around the 0.5 mile pathway around the reservoir. A number of the signs require replacement due to weathering and peeling.
9	Aztec Disc Golf	Excellent	Directional sign installed in 2020.

Aztec Disc Golf Course

Recently designed and built in 2019, the Aztec Disc Golf Course is an 18-hole disc golf course located adjacent to Tiger Park. Two information sign panels (#19 & #20) showing the disc course are located at Holes 1 and 10. At each t-box is a 8 x 11 sign/panel showing a map of the tee and basket. Each of these is mounted onto a 4x4 post.

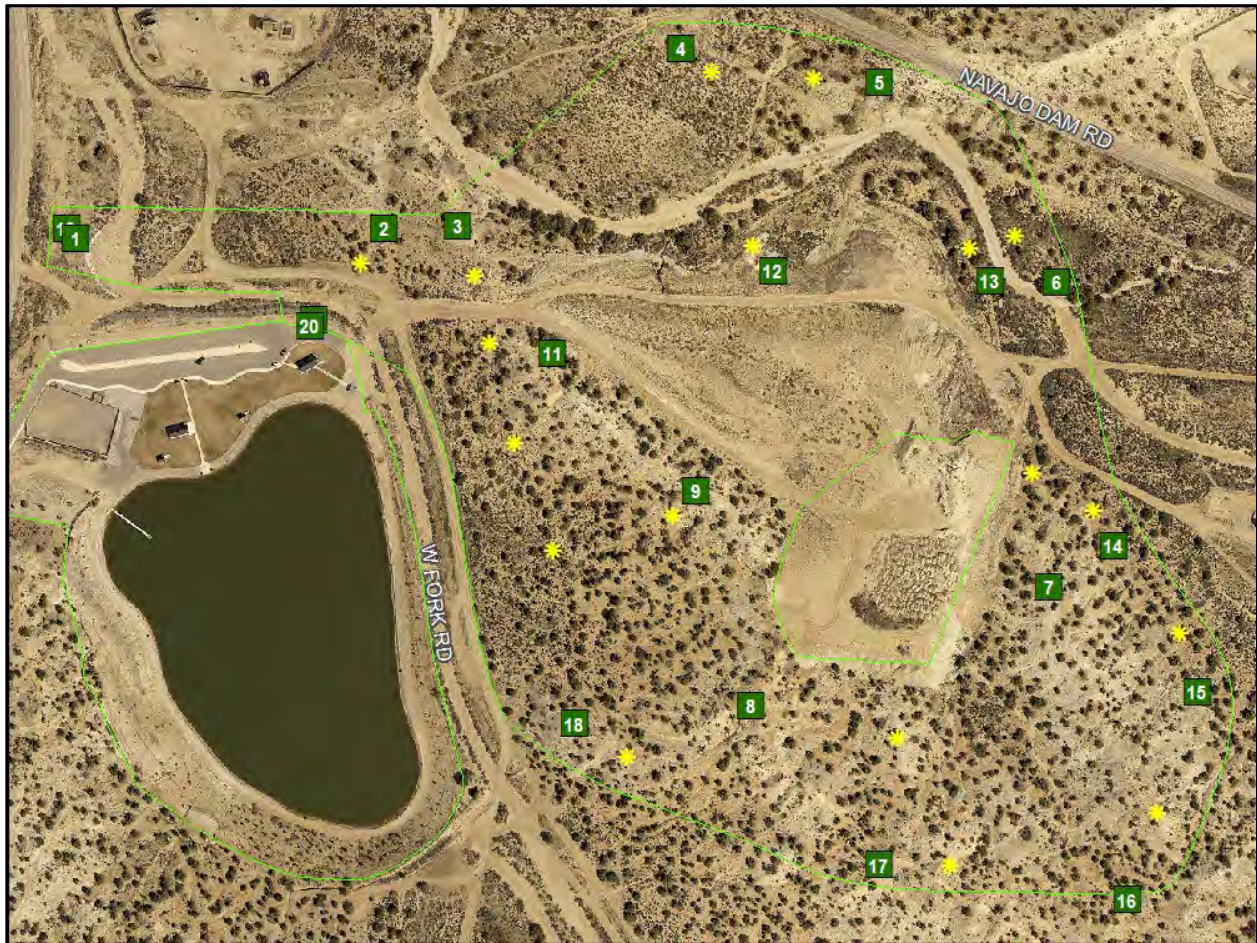


Figure 2.12. Aztec Disc Golf Course.

	<u>Signage</u>	<u>Status</u>	<u>Condition</u>
1-18	Tee Box Signs	Good	Installed in 2021.
19	Info/Course Map Sign	Good	Installed in 2020.
20	Info/Course Map Sign	Good	Installed in 2020.



Aztec Motocross

A 5 by 10 ft sign panel on a fabricated pipe frame currently exists at the entrance of the Aztec Motocross race track. The sign panel is updated yearly by Aztec Motocross Association to list race dates and sponsors.

Per the Aztec Motocross Mitigation Plan required by the BLM, the City will develop an informational kiosk to provide basic rules and info on what activities are allowed on public BLM lands. A location for the kiosk(s) has yet to be determined.

Kart Kanyon Speedway

A 4 by 8 ft sign panel currently exists at the intersection of Navajo Dam Road and Motocross intersection. The managers of Kart Kanyon Speedway maintain and update this sign panel annually.

Section 3. Trail Signage

A conceptual plan for trails within the City of Aztec was developed by the Aztec Trails and Open Spaces organization in 2010. This plan outlines existing and proposed trails throughout the city. The plan identified some 11.7 miles (61,959 ft) of existing trails

varying from simple earthen trails to concrete sidewalks. An additional 13.3 miles (70,445 ft) have been proposed in order to fully connect the trail system within Aztec.

In addition to the identification of existing and proposed trails, the plan also identified the need for signage on the trail system. The plan noted that signage should be standardized and that three fundamental types of signage should be present:

1. Directional
2. Informational
3. Regulatory

Informational signage should provide cultural, natural, and/or historic information in the form of informational kiosks located at trail heads.

Animas River North Pedestrian Bridge

Historical information on Old Spanish Trail and Animas River were installed by the Aztec Ruins National Monument along the pedestrian bridge.



Figure 2.13. Informational panels installed by Aztec Ruins National Monument.

Riverside-Hartman Park Pedestrian Bridge

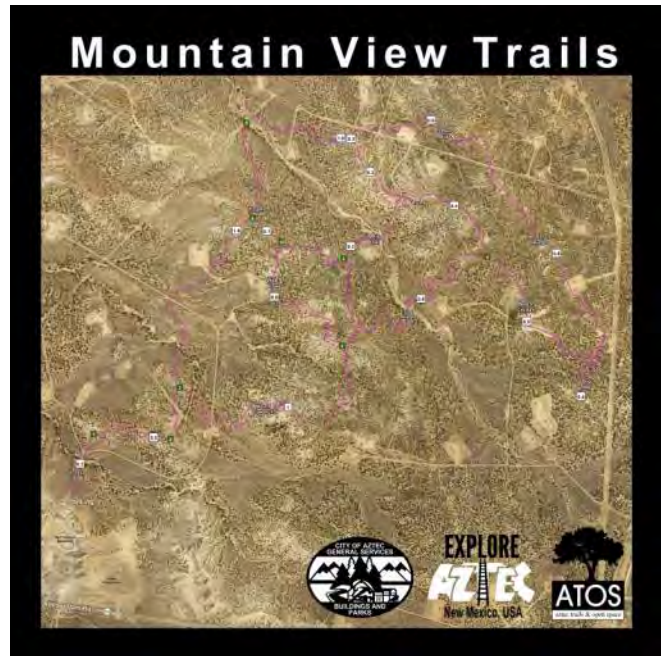
This signage was included in with the Hartman Park section of this plan.

1. Map of city.
2. Park rules.
3. Health Info

North Main / Rios de Animas Park Trail Connection

The North Main Extension project was completed in 2022. Five informational kiosks are proposed along the connecting trail. Each sign kiosk will consist of 3" by 3" square tubing construction at an above ground height of 6-1/2". Sign panels will be 4' by 4' single sided and oriented towards the trail. The five sign panels will include the following topics:

1. Aztec Becomes a Community: Anglo history of Aztec.
2. Hispanic History: Old Spanish Trail and Hispanic history
3. Ancestral Puebloan History: Details about Aztec Ruins and Pueblo Culture.
4. City Map with Points of Interest: Aztec Ruins, Museum, Recreation Areas, etc.
5. Outdoor Recreation Destinations & Descriptions: Disc Golfing, Mountain Biking, Aztec Motocross, Kart Canyon, and Aztec Arches.



Mountain View Trails

The Mountain View Trails consists of a single track trail system located on BLM lands with the City limits. In 2020, trail signage had been added at each trail intersection. These trail signs consisted of a 4x4 post with 9x12 panel showing the trail system and "You Are Here" at each location. A total of 10 location signs had been installed.

In 2021, a 40x40 sign panel was installed at the recently constructed parking lot for the Mountain View Trails. This sign panel shows an aerial view of the Mountain View Trails system and each trail segment has name and length denoted on the map.

This location is also being considered for another informational kiosk panel much like the one being considered at the Aztec Motocross.