

Western Drive Reconstruction
BID # 2017-606

Addendum #1
May 30, 2017



NOTICE TO BIDDERS

The following corrections, revisions, additions, and/or information for the above referenced project and shall be incorporated into the Plans, Specifications, and/or Contract Documents for the project as described below. The corrections, revisions, additions, and/or information shall henceforth be regarded as an integral part of the project, carrying the same weight and force as original sections of the plans, specifications, and/or contract documents.

Ensure that you indicate receipt of this Addendum on your Bid.

BID DUE DATE: Monday, June 5, 2017, 2:00 PM, City of Aztec Attn: Purchasing Office, 201 W Chaco, Aztec NM 87410

BID OPENING DATE: Monday, June 5, 2017, 3:45 PM, City of Aztec Commission Room, 201 W Chaco, Aztec NM 87410

Revisions and Clarifications:

1. Clarification: Sheet 2-2 Storm Pipe Cap Detail. City will not provide base course as indicated. Base Course will be incidental to Storm Pipe. City will provide the Storm Pipe. Bid item will be for installation per the detail.
2. Clarification: Sheet 2-2 Culvert Curb Inlet Grate Detail. Add Inlet Grate
3. Clarification: Sheet 1-2. Remove General Note 12 and replace with:
Contractor shall exercise due care to avoid damage to the existing facilities (curb & gutter, pavement, conduits, landscaping, utility lines, etc.) during construction. Any damaged facilities shall be corrected or replaced at the contractors' expense in a manner acceptable to the City Engineer.
4. Clarification: An additional 15" Culvert will be installed at Stat 1+97.
5. Plans: Remove and replace Sheets 2-2 and 3-1
6. Bid Sheet: Use the attached revised Bid Sheet
 - a. Change Item 6 from 15" Corrugated HDPE Storm Line 48LF to Install 15" Storm Line LS.
 - b. Remove Item 7

End Addendum #1

Issued 5/30/2017
Kathy Lamb
Finance Director

BID 2017-606 WESTERN DR RECONSTRUCTION ADDENDUM 1

ITEM	DESCRIPTION	UNIT	QUANTITY	UNIT COST	TOTAL
1	Sawcut and Remove Curb and Gutter	LF	1935		
2	Sawcut and Remove Existing Sidewalk and Driveways	SY	891		
3	4" Sidewalk	SY	940		
4	24" Curb & Gutter	LF	2093		
5	Double Curb Inlet	EA	1		
6	Install 15" Storm Line	LS	1		
7	Inlet Box	LS	1		
8	Remove and Replace Mail Boxes	EA	16		
9	Storm Pipe Cap	LS	1		
10	Flush Turn Down Sidewalk	SY	72		
11	6" Concrete Driveway	SY	95		
12	Construction Staking by Contractor	LS	1		
13	Traffic Control	LS	1		
CONCRETE CONSTRUCTION BID TOTAL					

ITEM	DESCRIPTION	UNIT	QUANTITY	UNIT COST	TOTAL
14	NMDOT Base Course	TON	80		
15	Base Course Grading and Compaction	SY	3305		
16	HMA SPIV 3"	SY	3305		
17	Adjust Manhole to Grade	EA	12		
18	Adjust Water Valve to Grade	EA	5		
19	Construction Staking by Contractor	LS	1		
20	Traffic Control	LS	1		
PAVEMENT CONSTRUCTION BID TOTAL					

Total Written Amount of Concrete Bid (Excluding Tax)

Total Written Amount of Pavement Construction Bid (Excluding Tax)

SIGNATURE OF BIDDER

Printed Name of Bidder

Title

Telephone Number

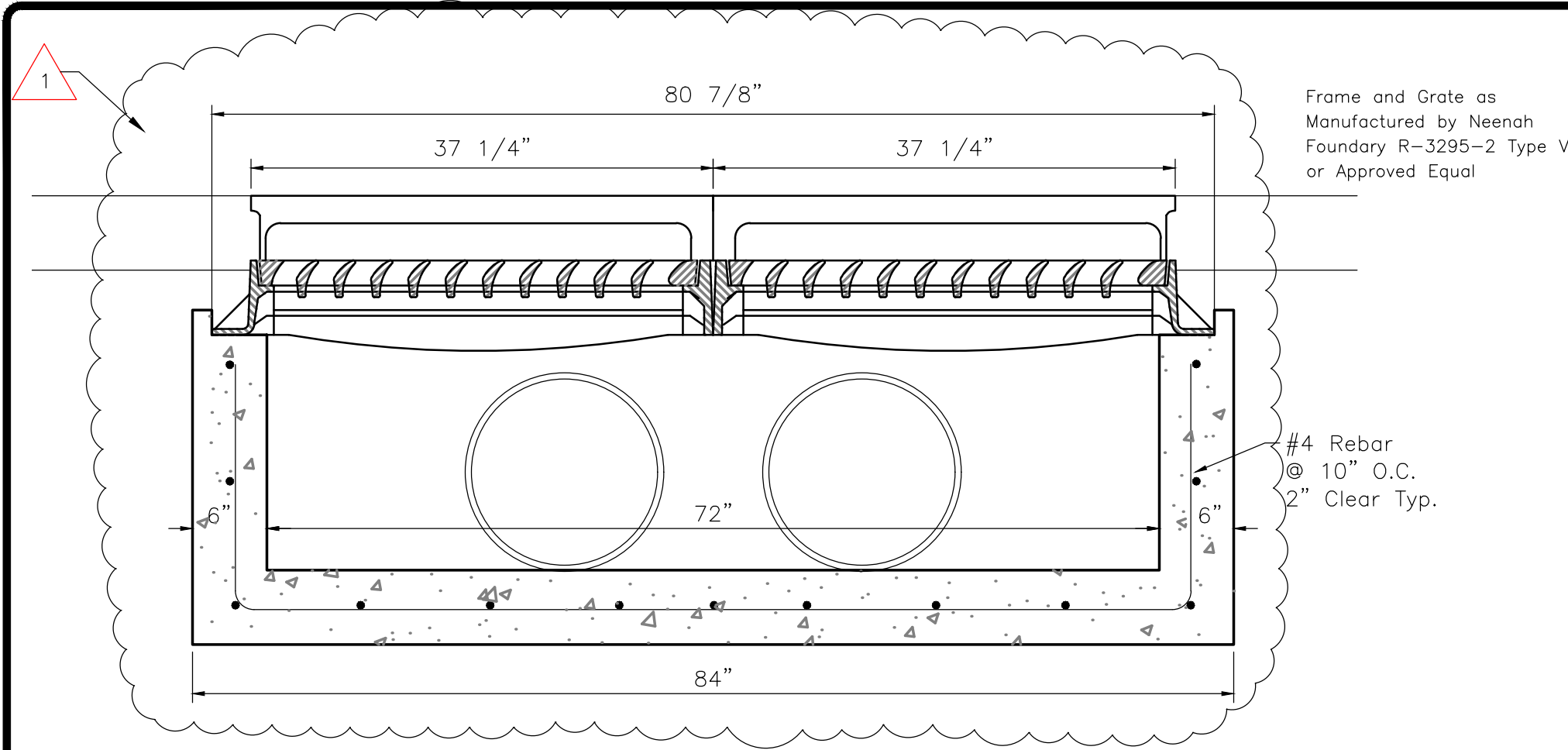
Fax Number

Email

(SEAL) If Bid is by a Corporation

Attest: _____

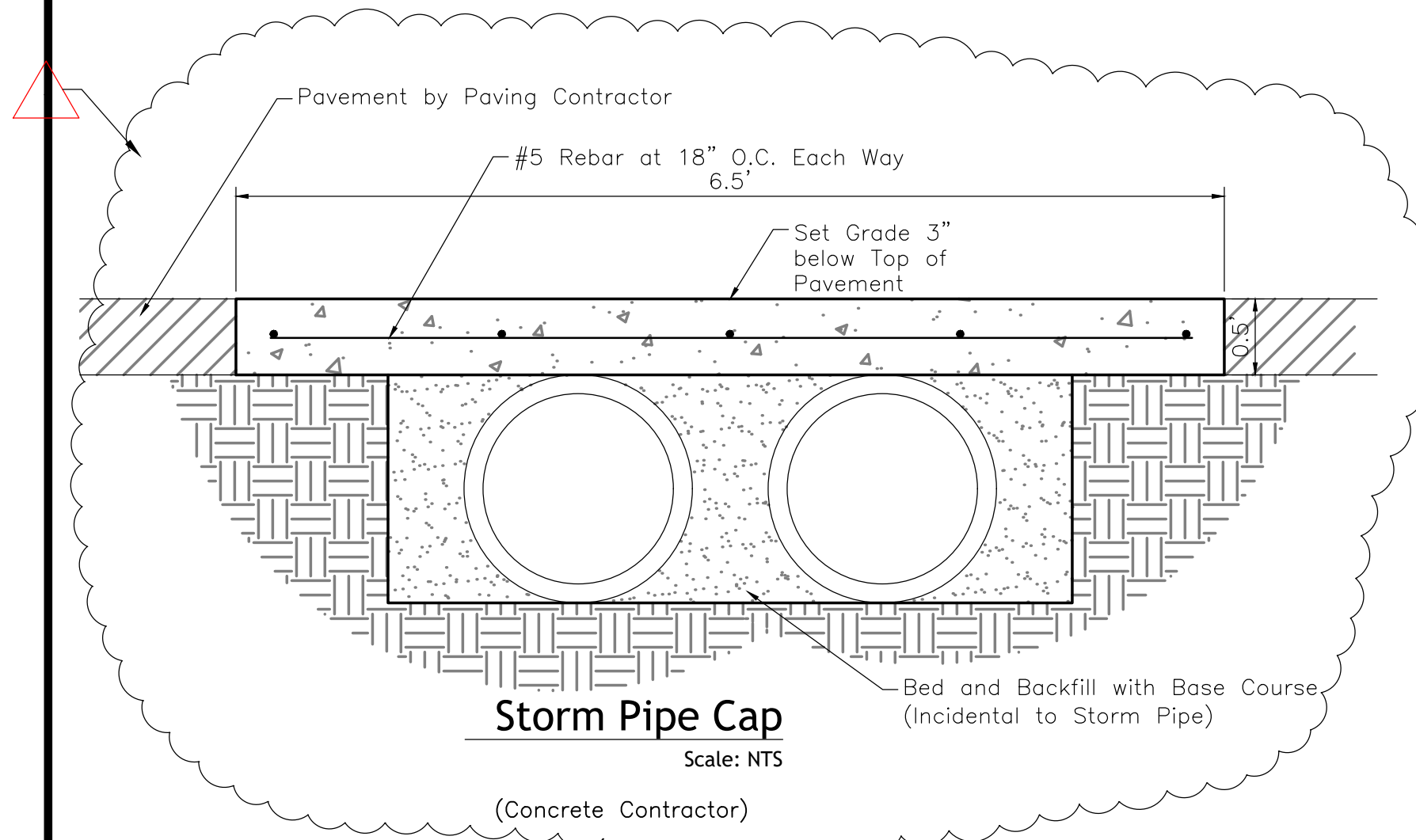
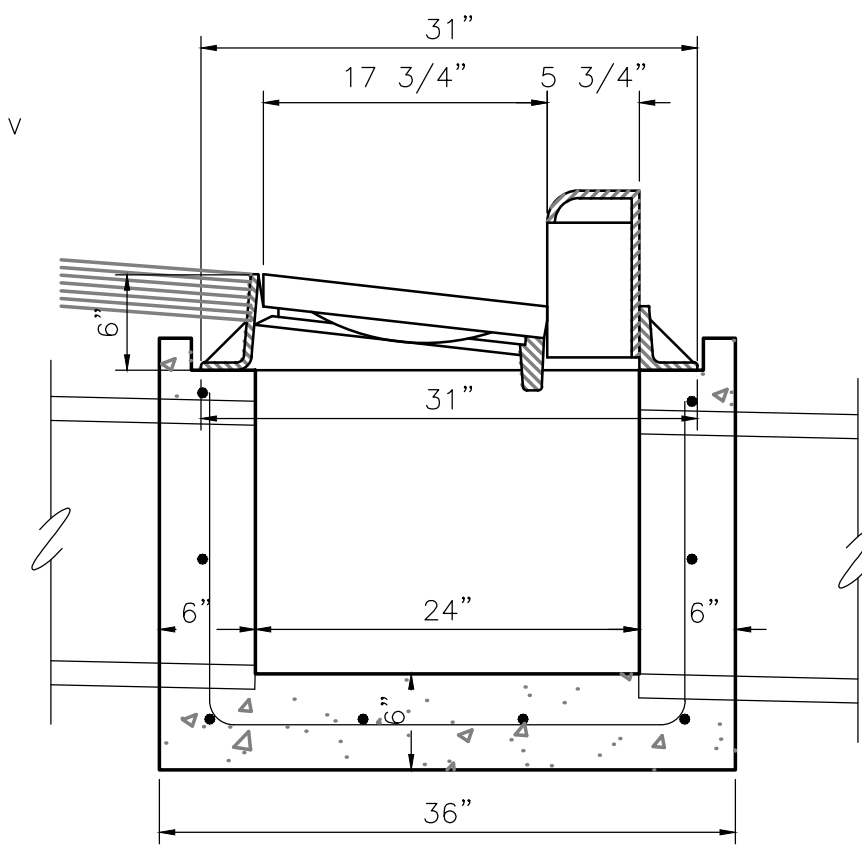
Title: _____



Double Curb Inlet

Scale: NTS

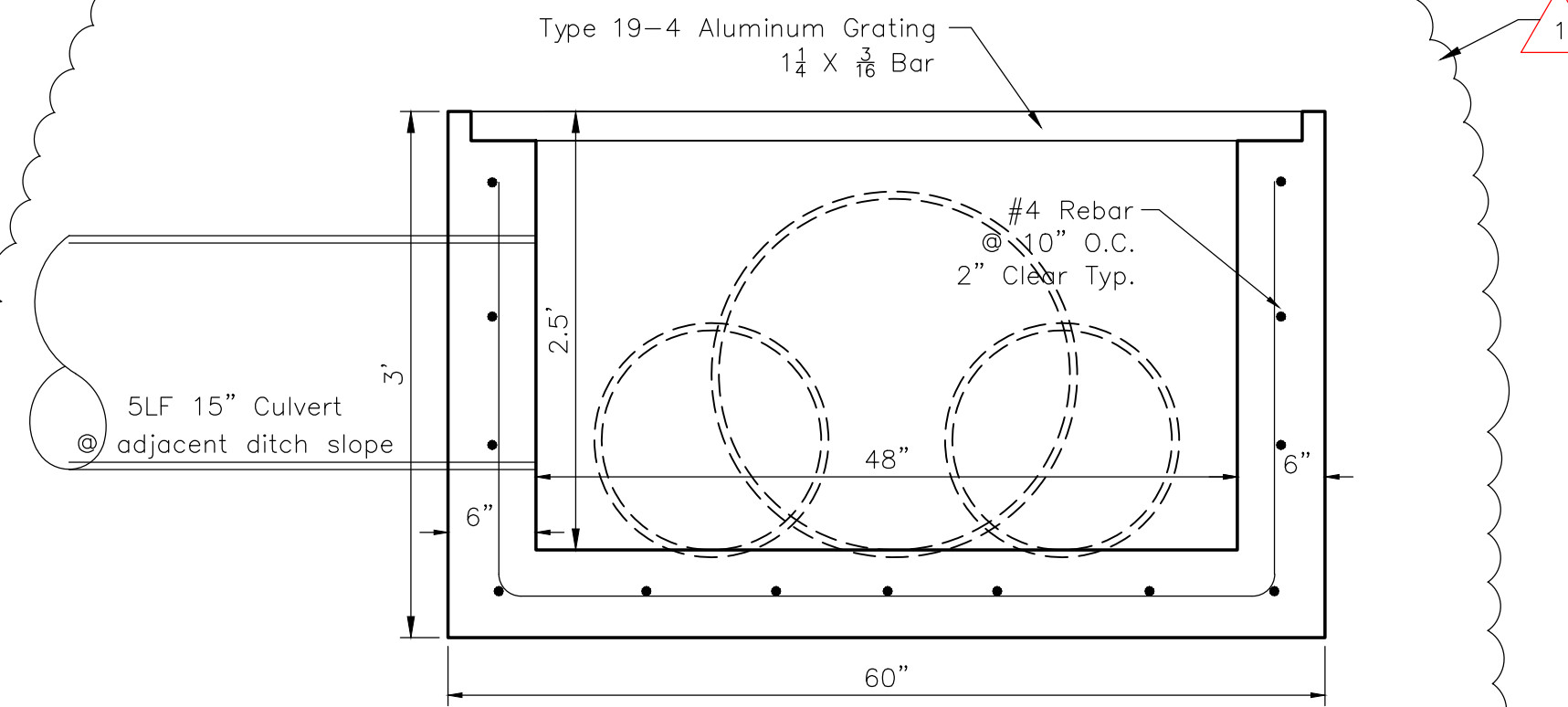
(By Concrete Contractor)



Storm Pipe Cap

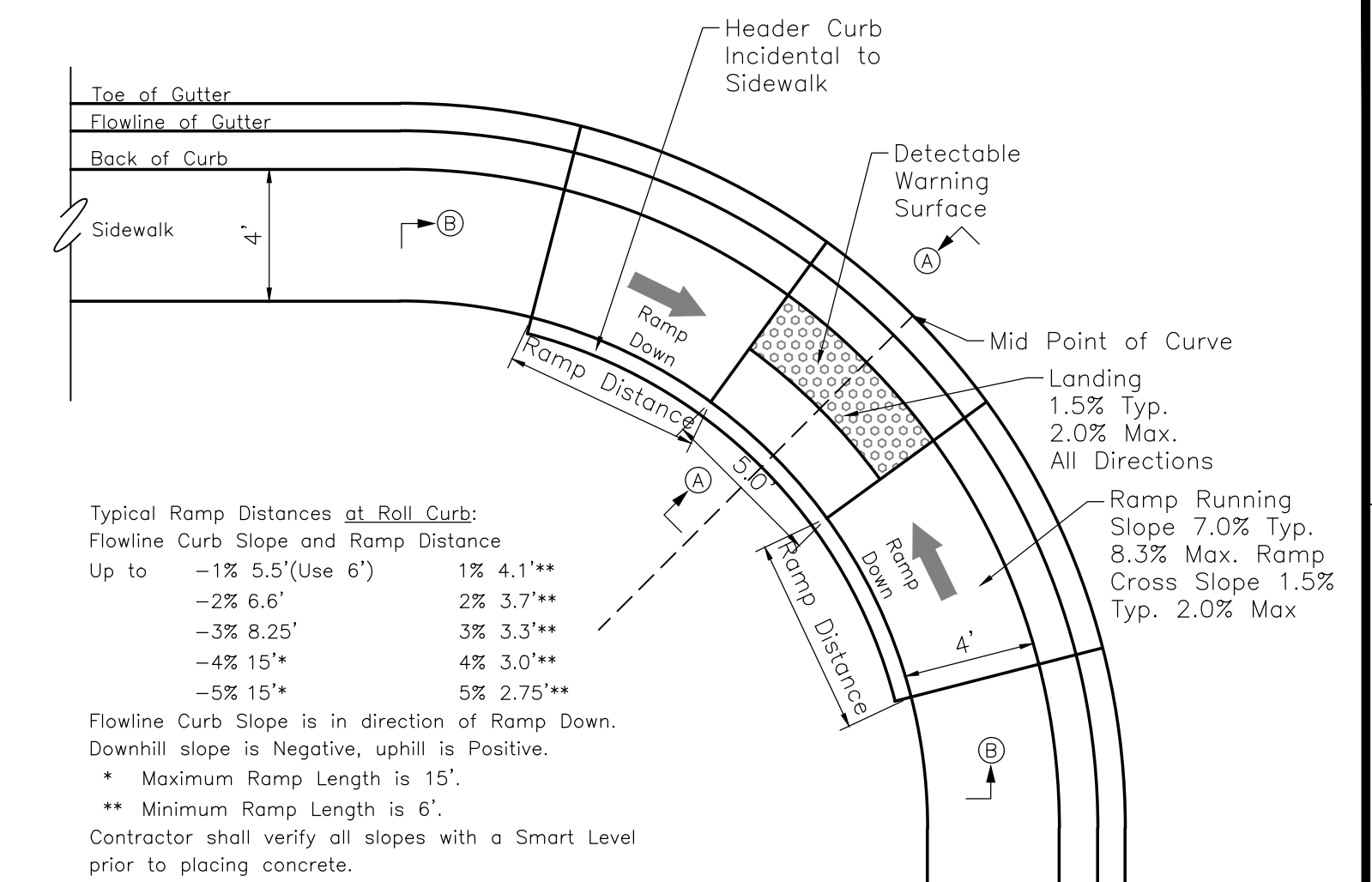
Scale: NTS

(Concrete Contractor)



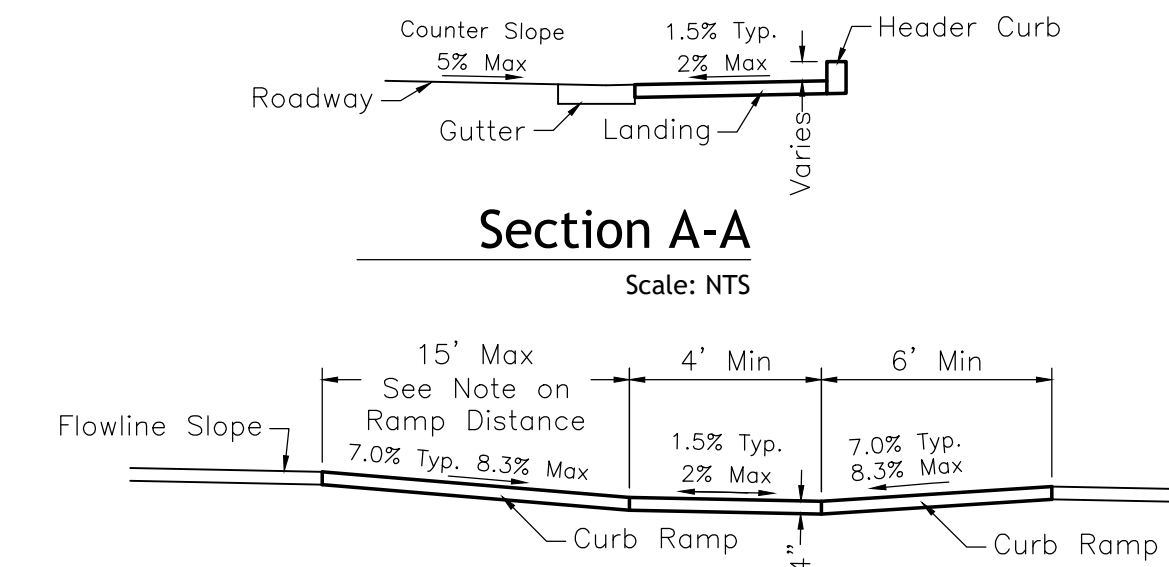
Inlet Grate - Section A-A

(By Concrete Contractor) Scale: NTS



Parallel Curb Ramp - Plan

Typical All Corners Scale: NTS

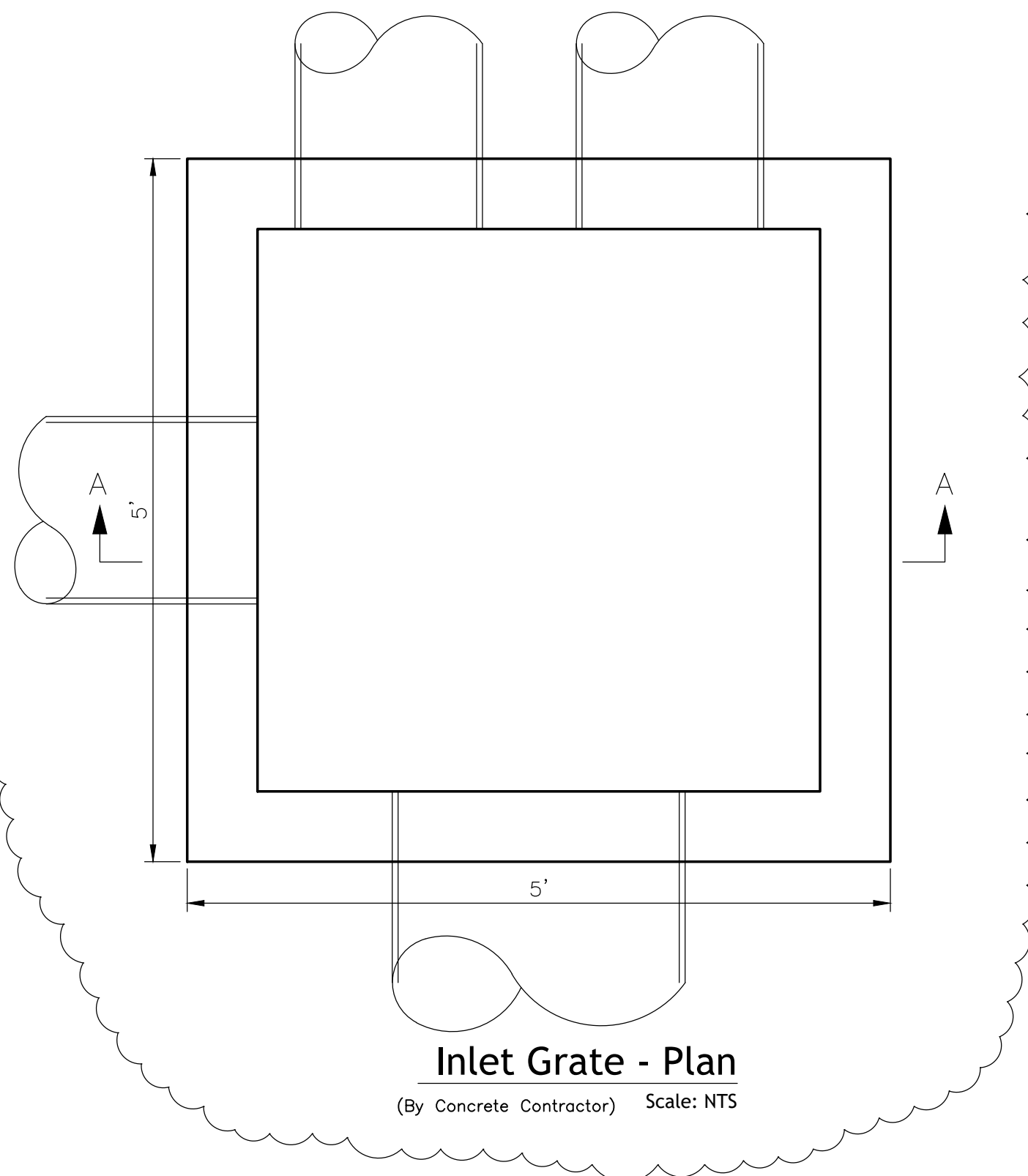


Section A-A

Scale: NTS

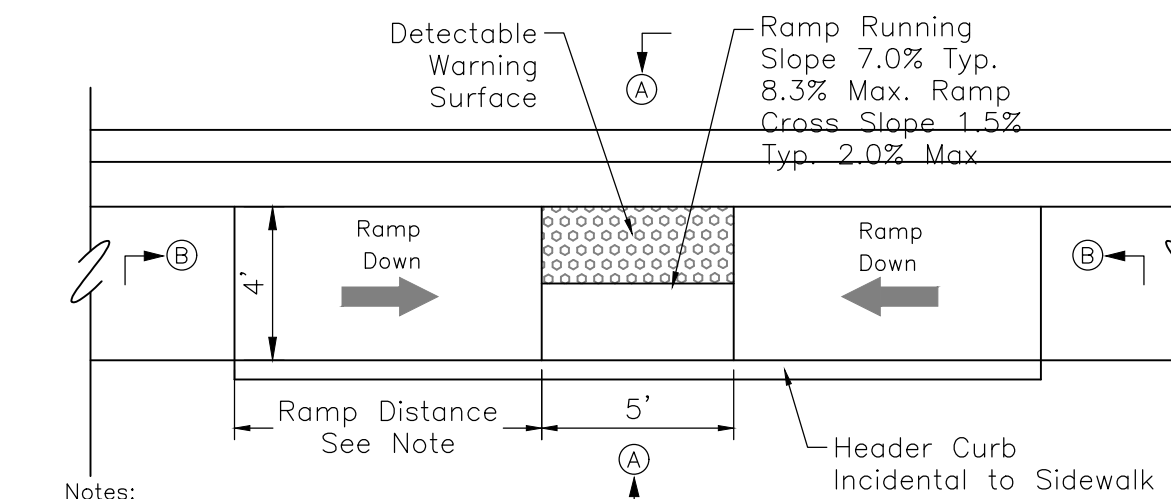
Section B-B

Scale: NTS



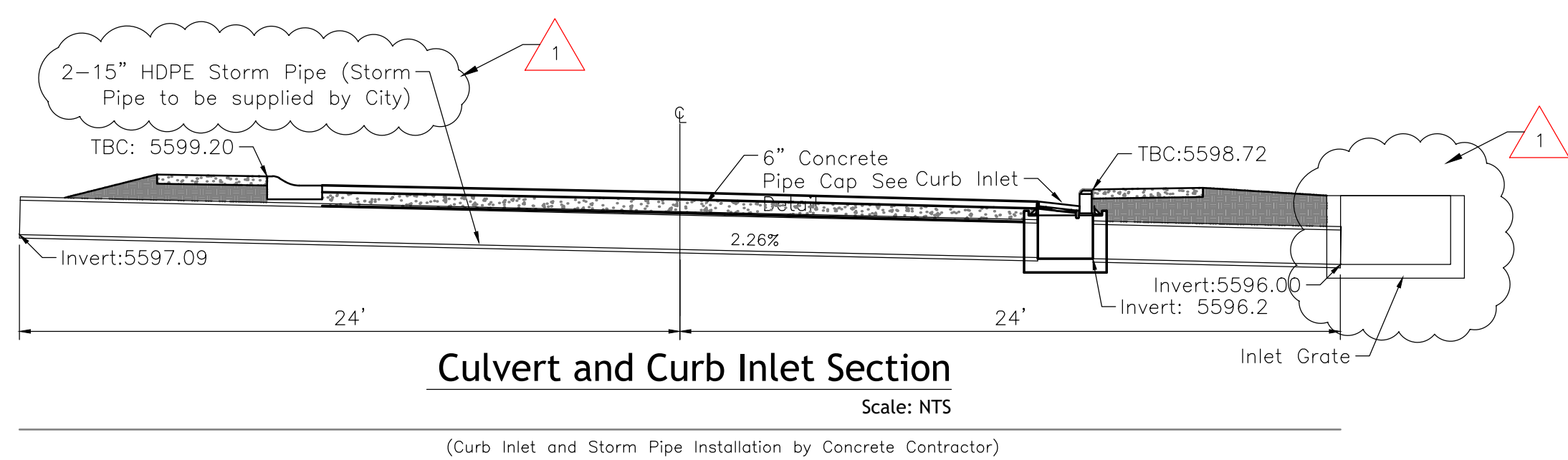
Inlet Grate - Plan

(By Concrete Contractor) Scale: NTS



Mid Block Parallel Ramp - Plan

Sta 3+15.54, 15'R
Sta 8+78.50, 15'R
Scale: NTS

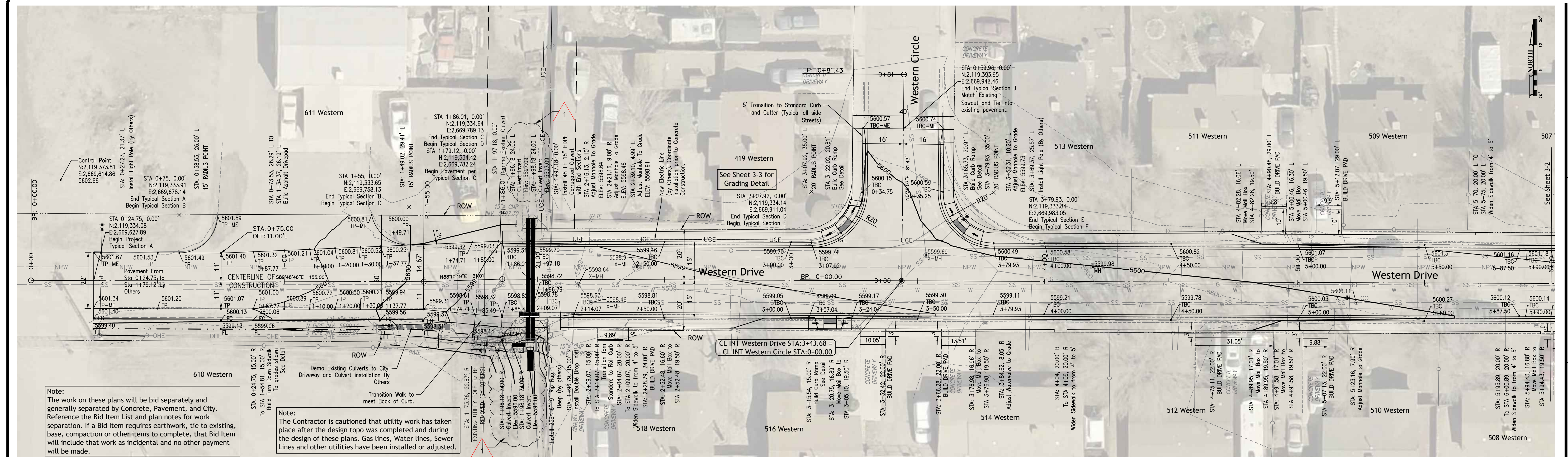


Culvert and Curb Inlet Section

Scale: NTS

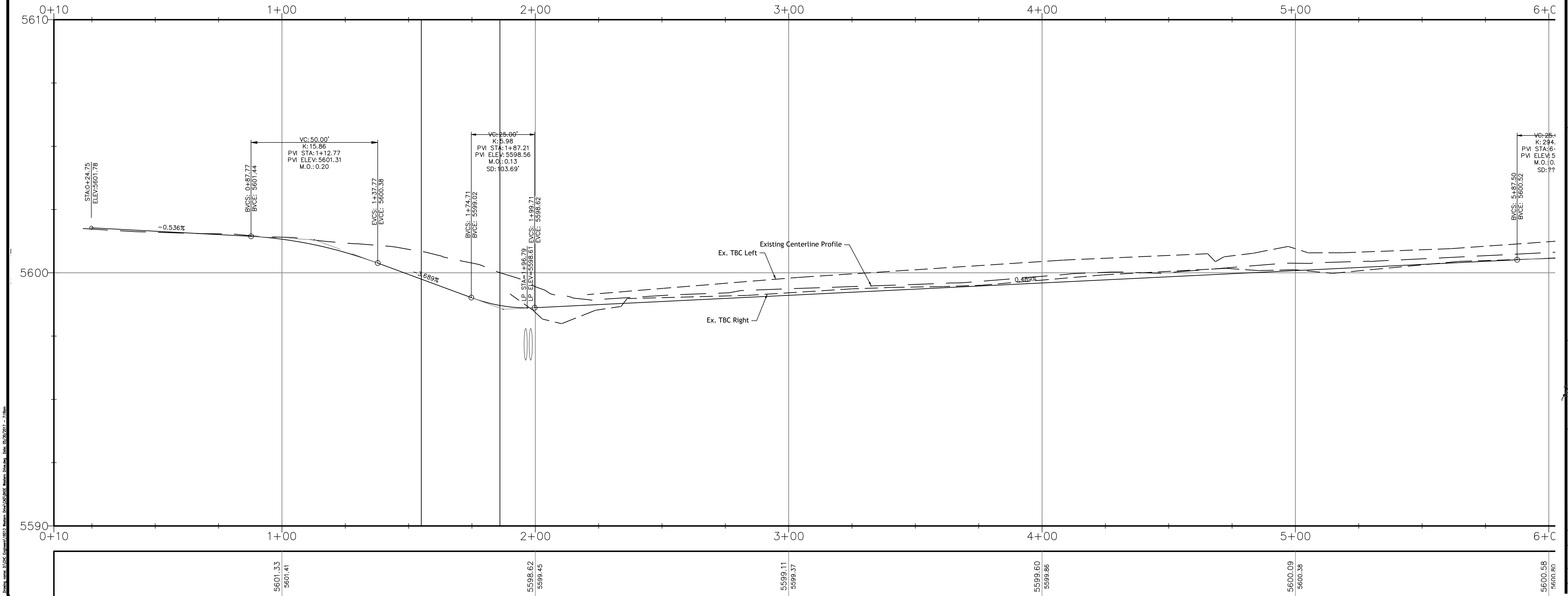
(Curb Inlet and Storm Pipe Installation by Concrete Contractor)

Revision Log	ADDENDUM #1	Plot Date: 05/30/2017 - 7:12am
1	15/25/17	
2		
3		
4		
5		
6		
City of Aztec		
Project: WESTERN DRIVE RECONSTRUCTION		
Sheet Description: CONSTRUCTION DETAILS		
50 Valley Court Durango, CO 970-387-8765		
NMDOT CN: L500226		
Project Date: 5/25/17		
Proj: 16013		
2-2		



Note:
The work on these plans will be bid separately and generally separated by Concrete, Pavement, and City. Reference the Bid Item List and plan notes for work separation. If a Bid Item requires earthwork, tie to existing, base, compaction or other items to complete, that Bid Item will include that work as incidental and no other payment will be made.

Note:
The Contractor is cautioned that utility work has taken place after the design top was completed and during the design of these plans. Gas lines, Water lines, Sewer Lines and other utilities have been installed or adjusted.



Revision Log	ADDENDUM #1
1	15/25/17
2	
3	
4	
5	
6	

Plot Date: 05/30/2017 - 7:18am

Project: WESTERN DRIVE RECONSTRUCTION

Sheet Description: WESTERN DRIVE PLAN AND PROFILE

Owner: City of Aztec

Professional Seal: R. CLAYTON HARRISON, NEW MEXICO, 14235, 150/11, LICENSED PROFESSIONAL ENGINEER

CHC Engineers, LLC
50 Valley Court
Durango, CO
970-387-8765

NMDOT CN: L500226

Project Date: 5/25/17

Proj: 16013

Page: 3-1