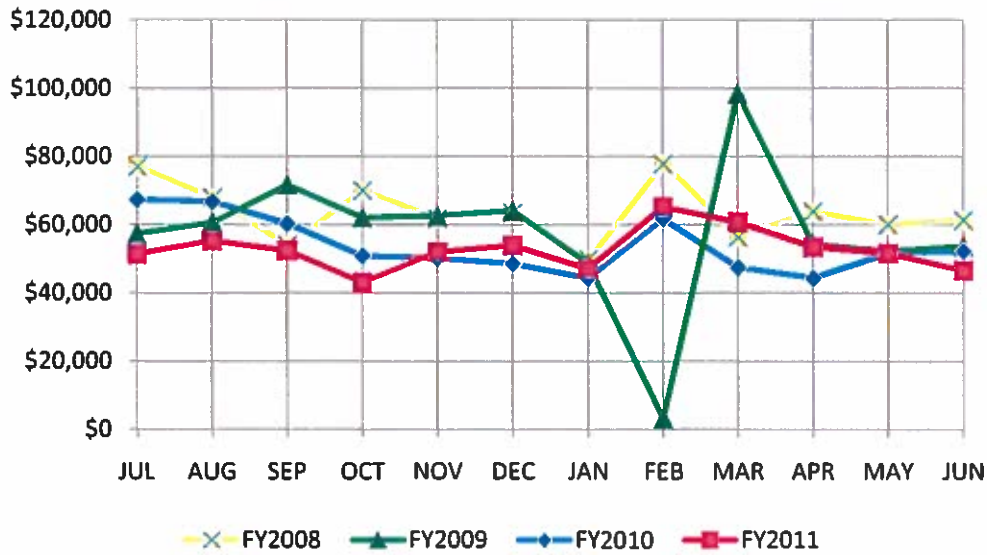
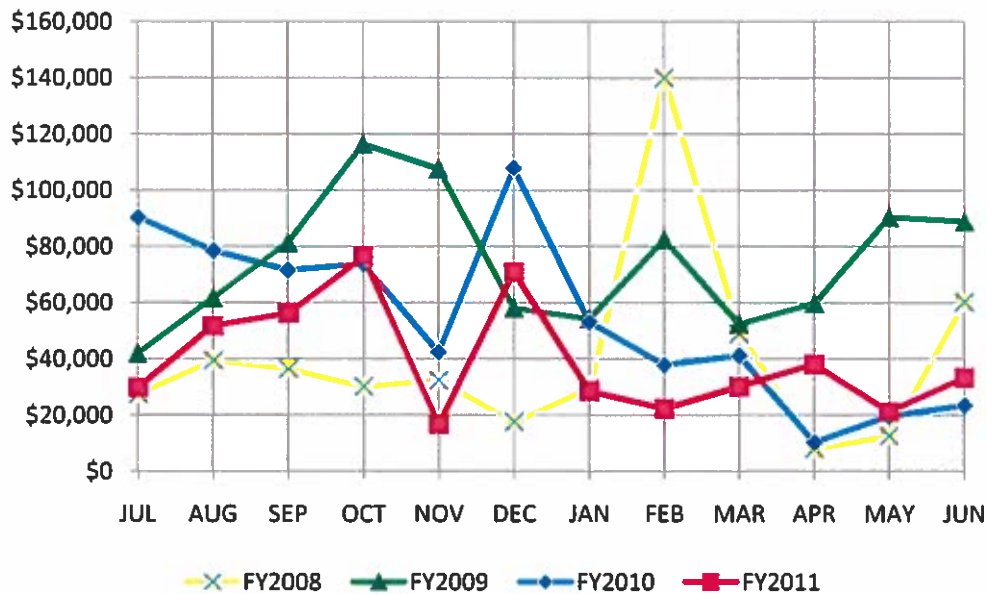


**AZTEC GROSS RECEIPTS DISTRIBUTION
FISCAL YEAR 2011
THROUGH JUNE 2011
SELECTED REPORTING SECTORS**

**GROSS RECEIPTS MONTHLY DISTRIBUTION:
RETAIL**

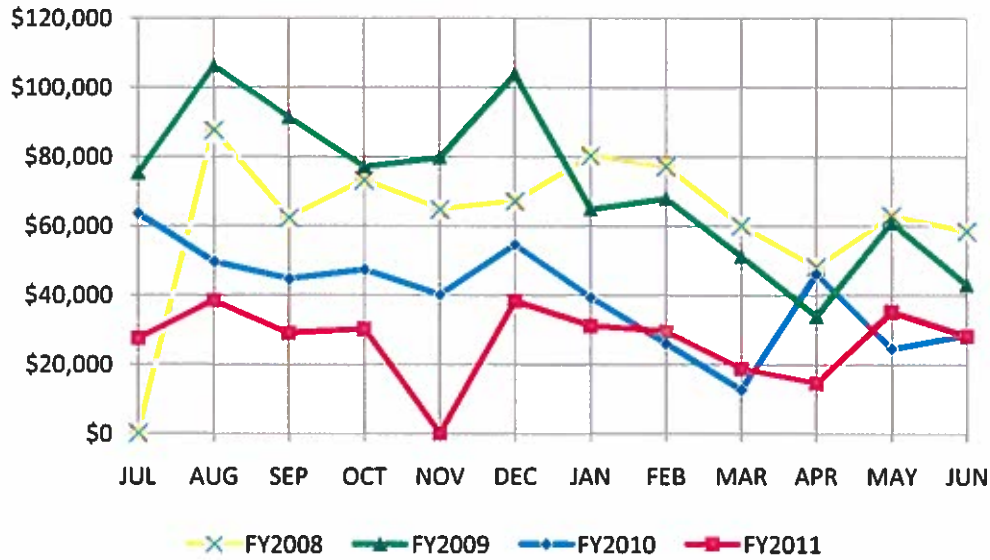


**GROSS RECEIPTS MONTHLY DISTRIBUTION:
CONSTRUCTION**

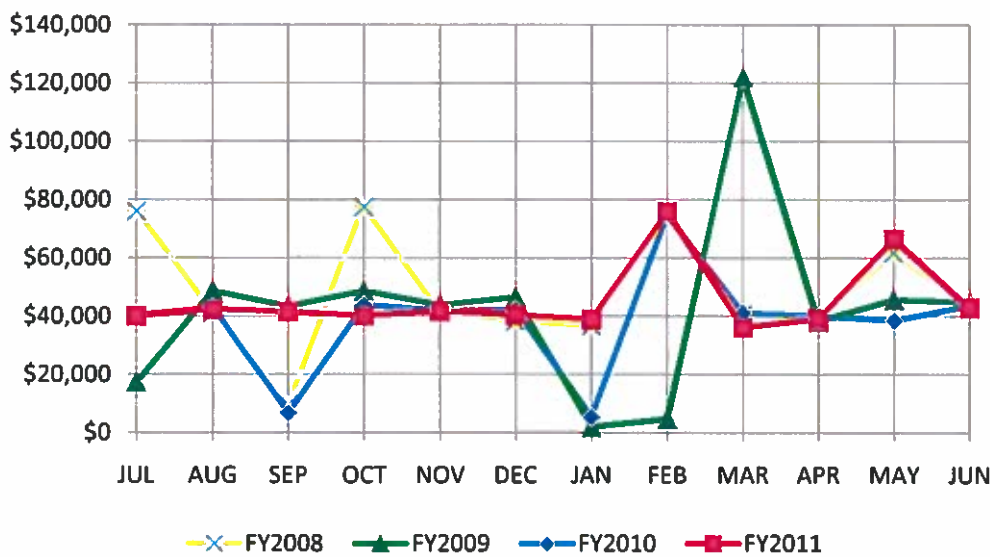


**AZTEC GROSS RECEIPTS DISTRIBUTION
FISCAL YEAR 2011
THROUGH JUNE 2011
SELECTED REPORTING SECTORS**

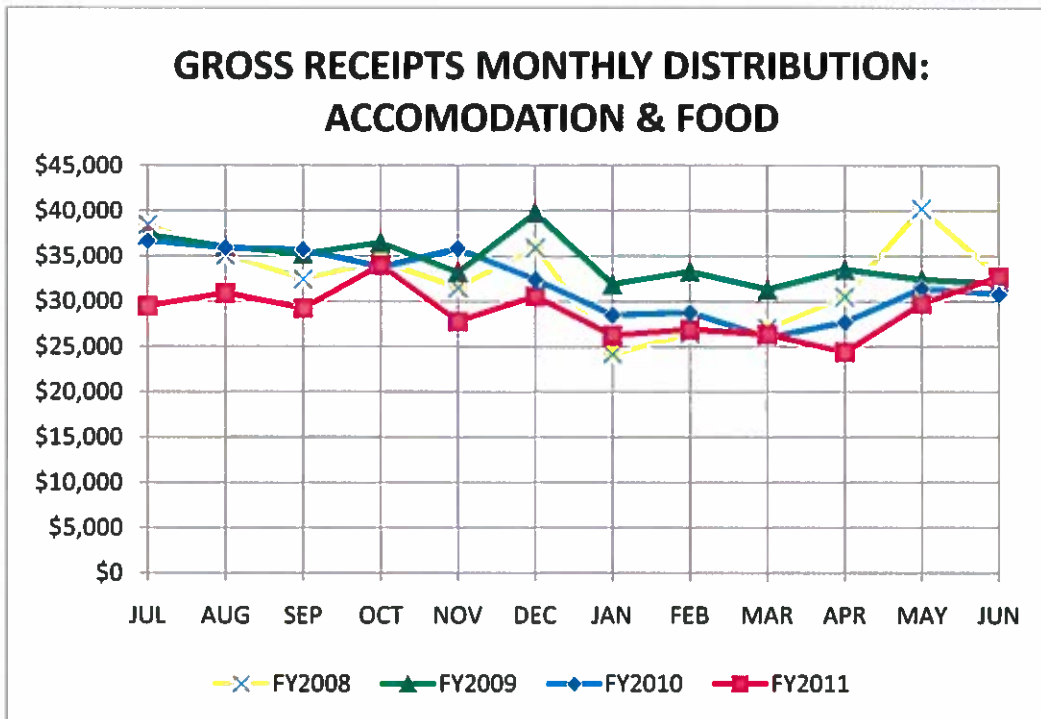
**GROSS RECEIPTS MONTHLY DISTRIBUTION:
MINING**



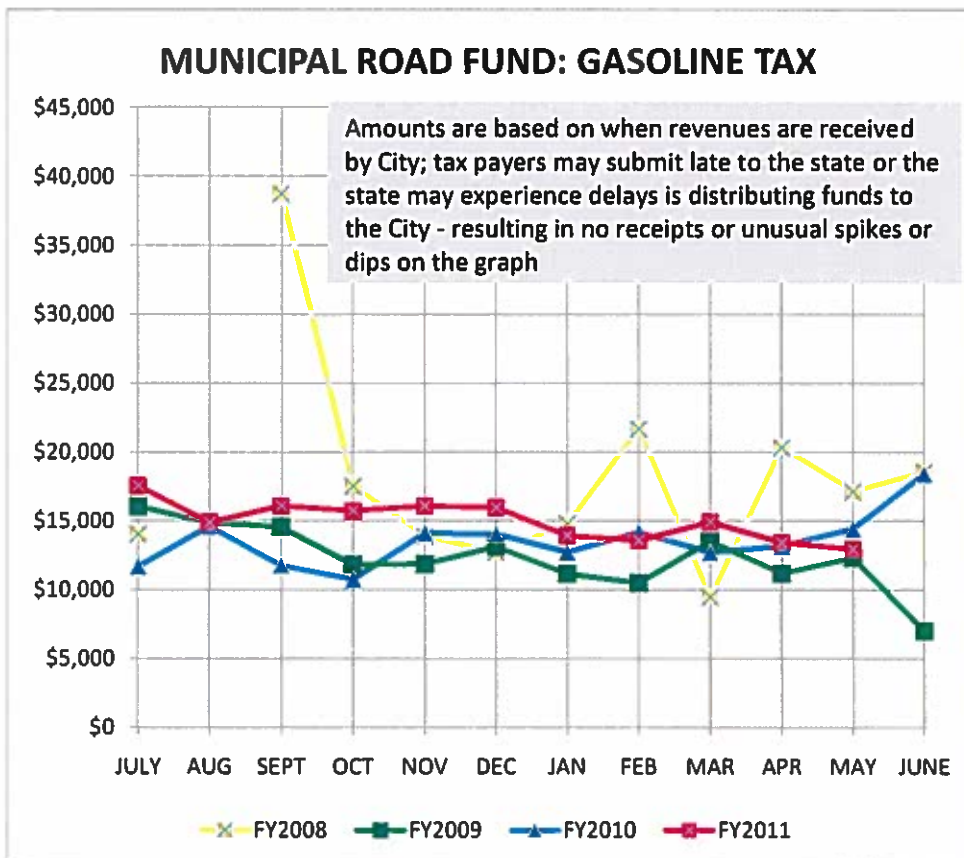
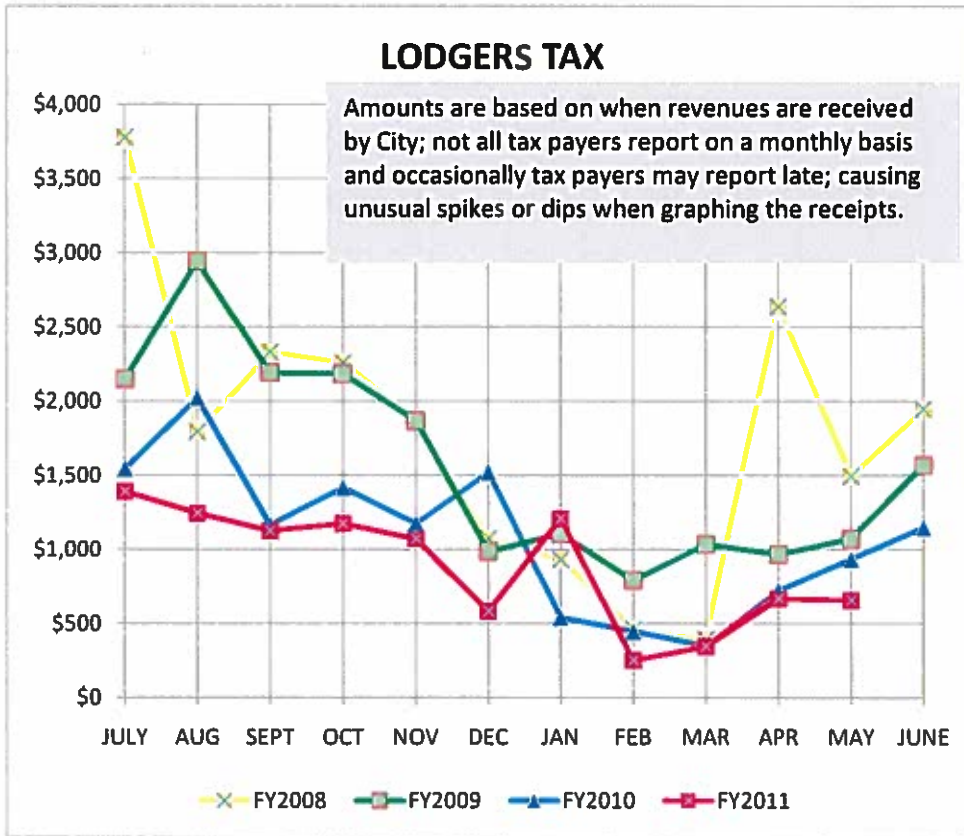
**GROSS RECEIPTS MONTHLY DISTRIBUTION:
GROCERIES**



**AZTEC GROSS RECEIPTS DISTRIBUTION
FISCAL YEAR 2011
THROUGH JUNE 2011
SELECTED REPORTING SECTORS**



**CITY OF AZTEC
FISCAL YEAR 2011
LODGERS TAX GASOLINE TAX COLLECTIONS
THROUGH MAY 2011**

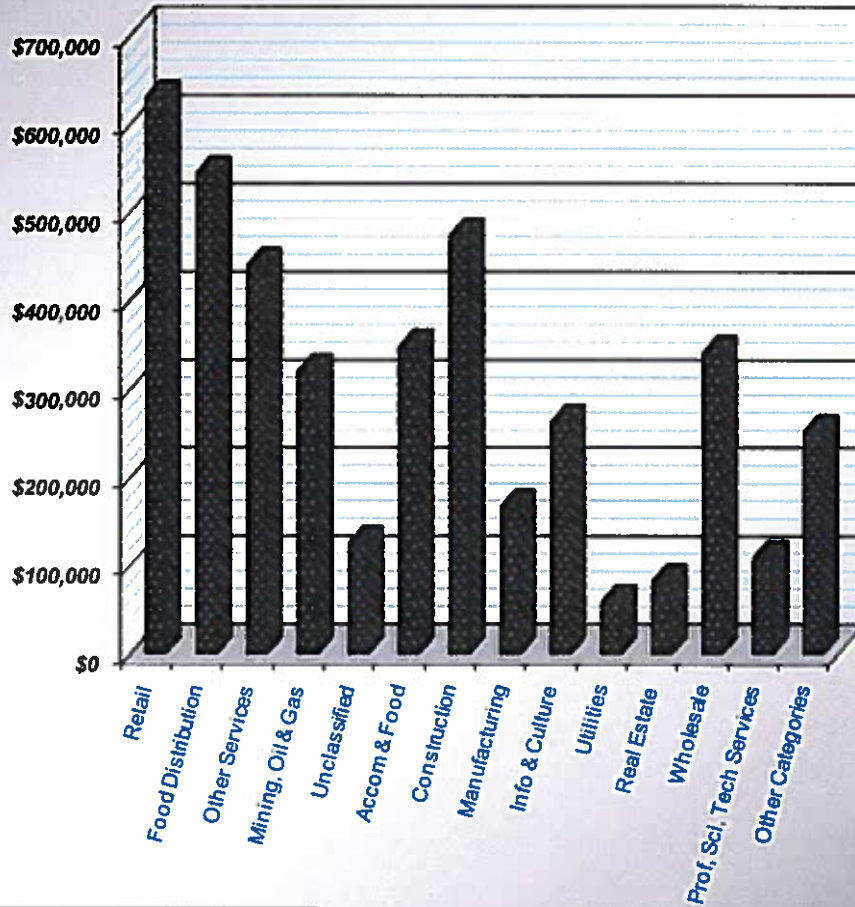


FINANCE

As of June 15, 2011

GROSS RECEIPTS

FY11 Gross Receipts by Reporting Category
Total Distribution to June 2011: \$4,159,225

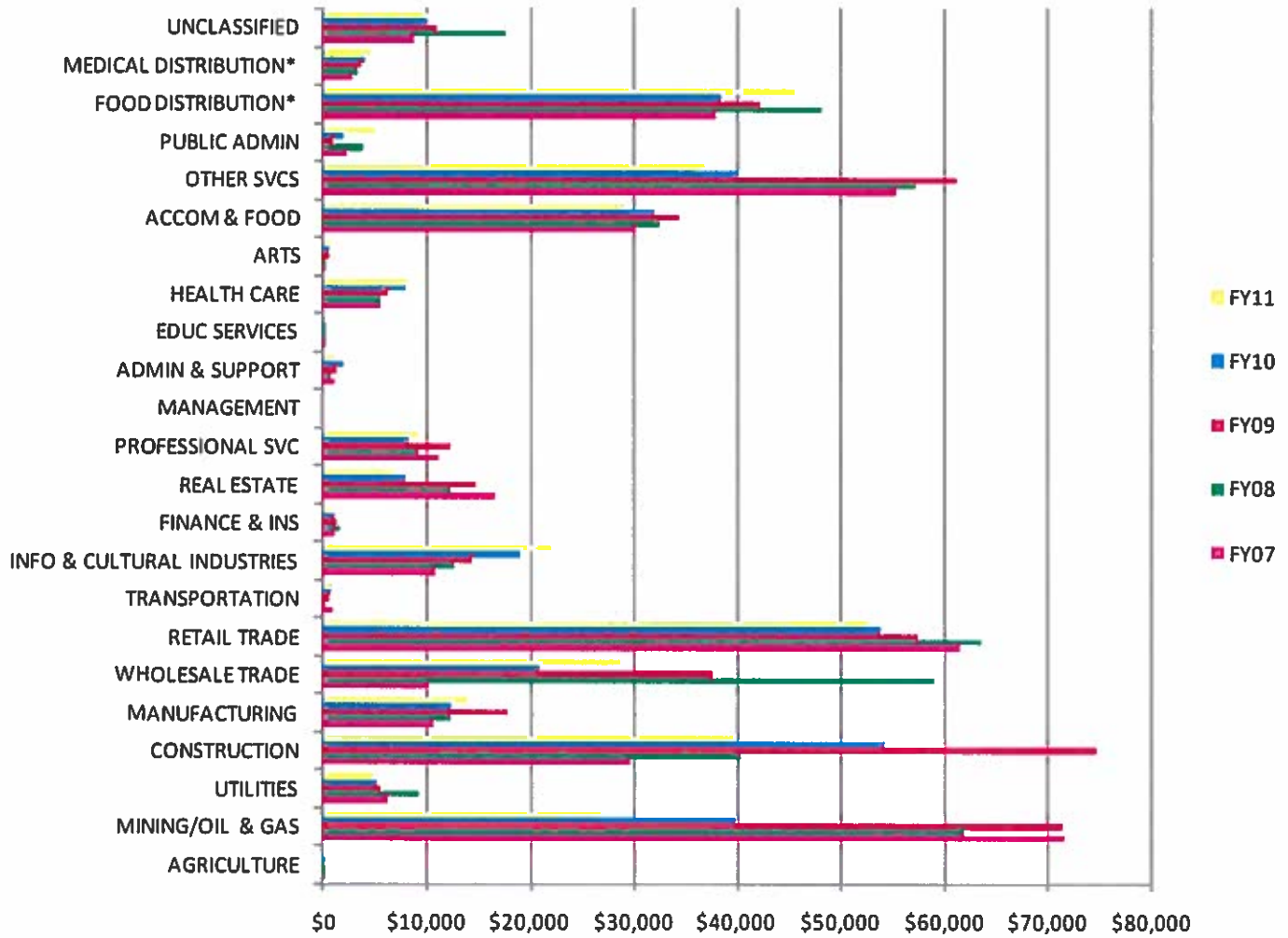


Total FY11 Budget:	\$3,543,103
Distribution to 6/2011:	\$4,159,225
% of Budget	117.39%
% of Year Complete	100.00%

PREVIOUS YEAR COMPARISON

Fiscal Year	Distribution to June (includes penalties & interest)	% Change from Previous Year
2011	\$4,185,987	-3.52%
2010	4,338,542	-23.15%
2009	5,645,797	3.96%
2008	5,430,814	20.65%
2007	4,501,428	10.00%

GRT Sector Averages FY07 through FY11



**CITY OF AZTEC
GROSS RECEIPTS TAXES
RECEIPTS BY INDUSTRY: MONTHLY AVERAGES**

Categories highlighted represent 10% or greater of average GRT distribution to City

	FY07	FY08	FY09	FY10 (end 6/30/10)		FY11 (end 6/30/11)	
				Average	% of Total	Average	% of Total
AGRICULTURE	22	101	48	53	0.01%	20	0.01%
MINING/OIL & GAS	71,626	61,842	71,319	39,757	11.06%	26,718	7.71%
UTILITIES	6,153	9,295	5,470	5,092	1.42%	4,884	1.41%
CONSTRUCTION	29,564	40,229	74,599	54,124	15.05%	39,536	11.41%
MANUFACTURING	10,571	12,278	17,833	12,321	3.43%	13,927	4.02%
WHOLESALE TRADE	10,126	58,857	37,532	20,892	5.81%	28,461	8.21%
RETAIL TRADE	61,436	63,573	57,402	53,804	14.96%	52,672	15.20%
TRANSPORTATION	882	209	511	681	0.19%	881	0.25%
INFO & CULTURAL INDUSTRIES	10,726	12,698	14,338	19,008	5.29%	21,892	6.32%
FINANCE & INS	1,088	1,504	1,222	1,064	0.30%	699	0.20%
REAL ESTATE	16,614	12,239	14,671	7,873	2.19%	6,809	1.96%
PROFESSIONAL SVC	11,142	9,176	12,352	8,253	2.30%	9,048	2.61%
MANAGEMENT	-	-	-	-	0.00%	-	0.00%
ADMIN & SUPPORT	991	743	1,211	1,900	0.53%	1,007	0.29%
EDUC SERVICES	4	22	83	45	0.01%	252	0.07%
HEALTH CARE	5,427	5,566	6,148	7,791	2.17%	8,054	2.32%
ARTS	163	65	519	514	0.14%	638	0.18%
ACCOM & FOOD	30,038	32,423	34,378	31,968	8.89%	29,028	8.38%
OTHER SVCS	55,309	57,251	61,172	40,044	11.14%	36,755	10.60%
PUBLIC ADMIN	2,286	3,846	834	1,946	0.54%	4,987	1.44%
FOOD DISTRIBUTION*	37,879	48,157	42,111	38,450	10.69%	45,410	13.10%
MEDICAL DISTRIBUTION*	2,811	3,239	3,525	4,014	1.12%	4,490	1.30%
UNCLASSIFIED	8,785	17,647	10,911	10,000	2.78%	10,433	3.01%
TOTAL	373,642	450,960	468,188	359,597		346,602	
% change in average distribution	10.10%	20.69%	3.82%	-23.19%		-3.61%	