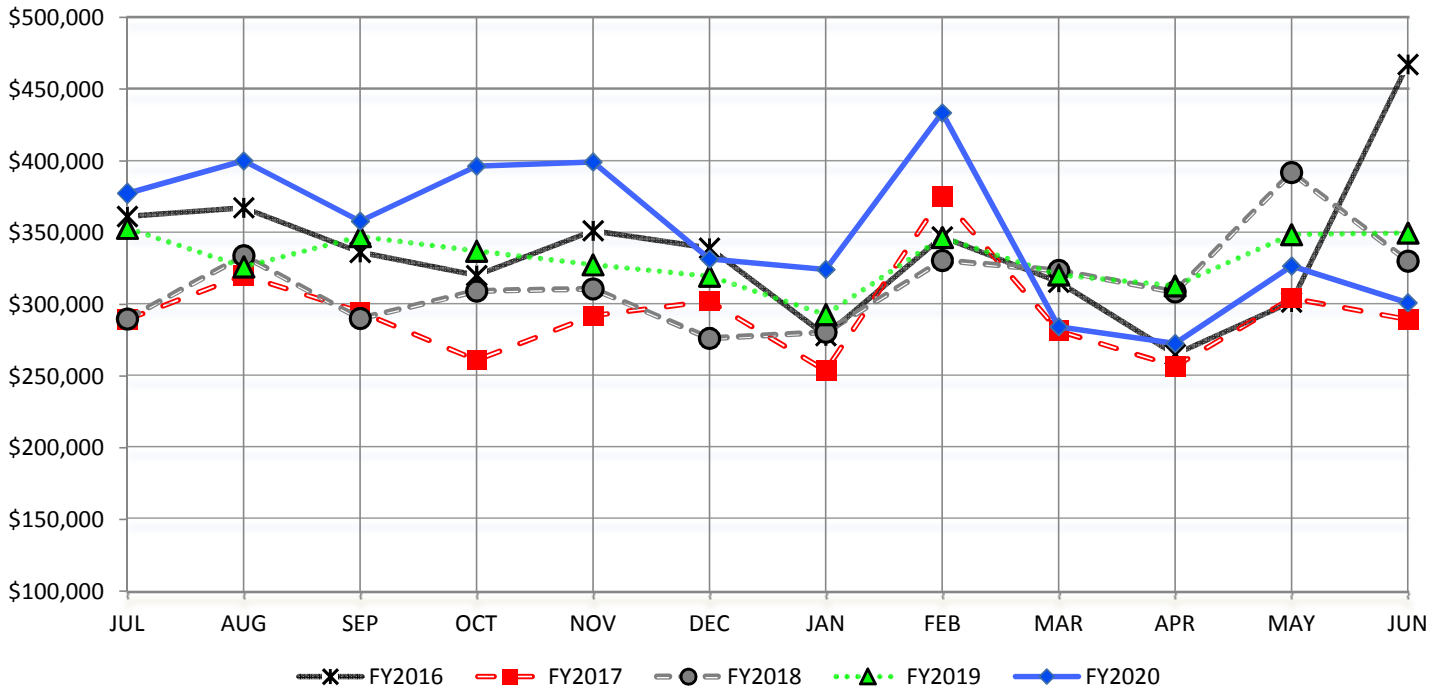


**CITY OF AZTEC Gross Receipts Taxes: Cash Basis
Fiscal Year 20: June 2020**

TOTAL GROSS RECEIPTS DISTRIBUTION BY MONTH

June 2016 Distribution includes Food Hold Harmless Corrections for Dec 14, Jan 15, Apr 16 & May 16

May 2018 Distribution includes Food Hold Harmless Correction for March 2018

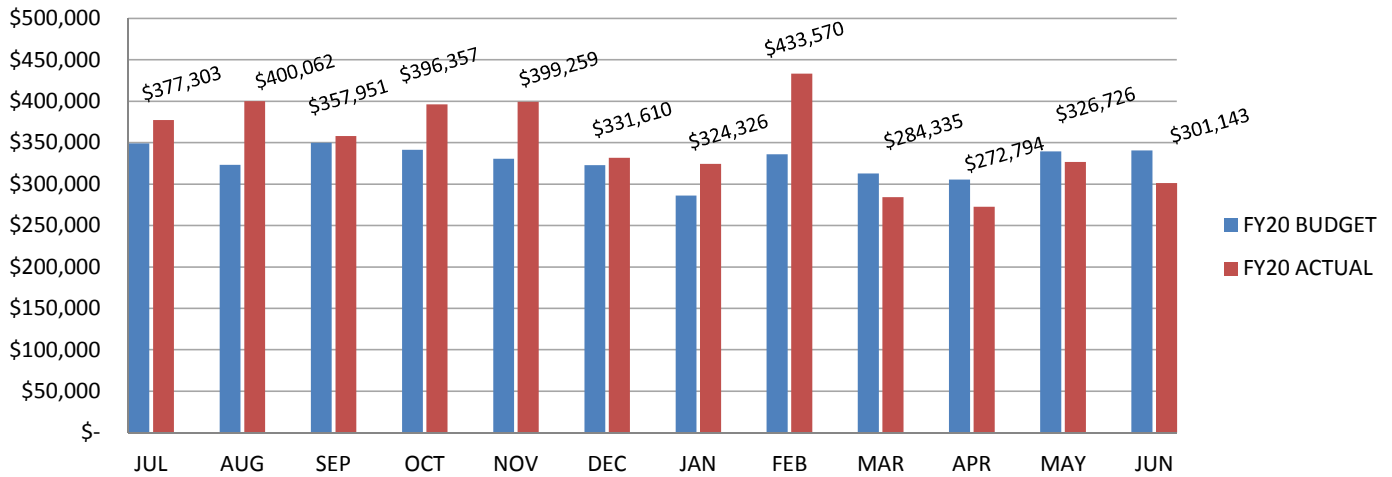


	FY16	FY17	FY18	FY19	FY20
Annual GRT Budget \$	4,493,377 \$	3,214,046 \$	3,213,457 \$	3,671,295 \$	3,938,375
JULY	361,240	289,349	289,872	353,016	377,303
AUGUST	367,416	320,332	333,921	326,134	400,062
SEPTEMBER *	336,323	294,802	290,183	347,278	357,951
OCTOBER	320,143	261,118	309,303	337,098	396,357
NOVEMBER	351,342	292,126	310,838	327,578	399,259
DECEMBER	339,138	302,172	276,324	319,662	331,610
JANUARY	278,209	253,817	280,608	292,887	324,326
FEBRUARY	347,020	374,972	330,639	346,561	433,570
MARCH	315,467	281,465	323,685	320,524	284,335
APRIL	265,105	256,776	308,710	312,877	272,794
MAY	301,617	304,165	391,951	348,566	326,726
JUNE	467,257	289,489	330,205	349,743	301,143
Total Distribution \$	4,050,276 \$	3,520,582 \$	3,776,238 \$	3,981,925 \$	4,205,436
% of Budget Received	90%	110%	117%	108%	107%
Average Distribution \$	337,523 \$	293,382 \$	314,687 \$	331,827 \$	350,453
Change in Average from Previous Fiscal Year	-15.3%	-13.1%	7.3%	5.4%	5.6%
Difference between Budget to Actual \$	(443,101) \$	306,536 \$	562,192 \$	310,630 \$	267,061
Avg Monthly Receipts per 1/4% \$	27,780 \$	20,055 \$	21,407 \$	21,376 \$	22,208
Gross Receipts Tax Rate	8.000%	8.000%	8.000%	8.000%	8.250%
EFF 1/2019:				8.250%	

* Beginning September 2019 and continuing to August 2021 - the state is distributing internet sales revenue based on population. Monthly amount to Aztec \$6,207.70

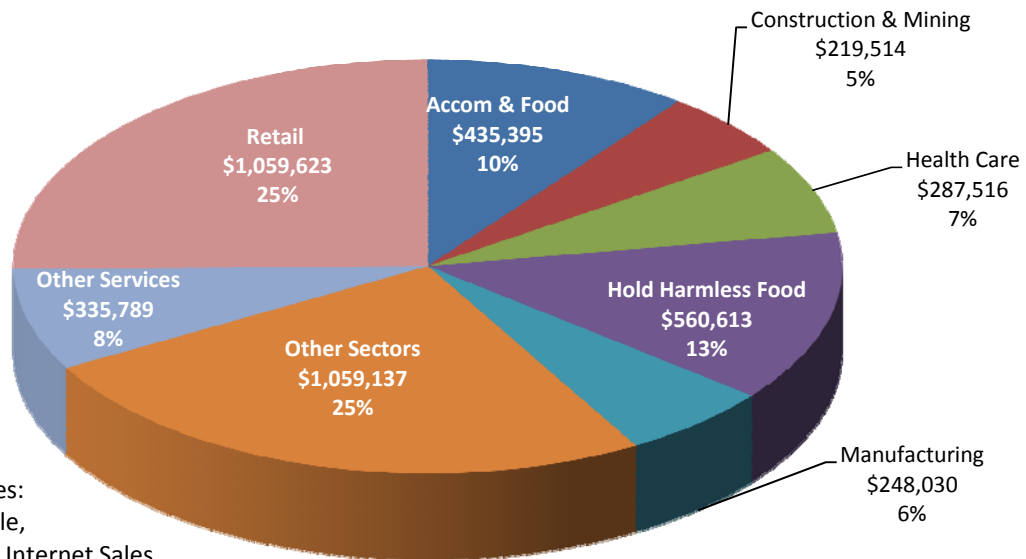
**AZTEC GROSS RECEIPTS DISTRIBUTION
FISCAL YEAR 2020: JUNE 2020
SELECTED REPORTING SECTORS**

GROSS RECEIPTS MONTHLY DISTRIBUTION: CURRENT FISCAL YEAR BUDGET TO ACTUAL



Amounts listed above bar graph is the actual monthly distribution for the current fiscal year.

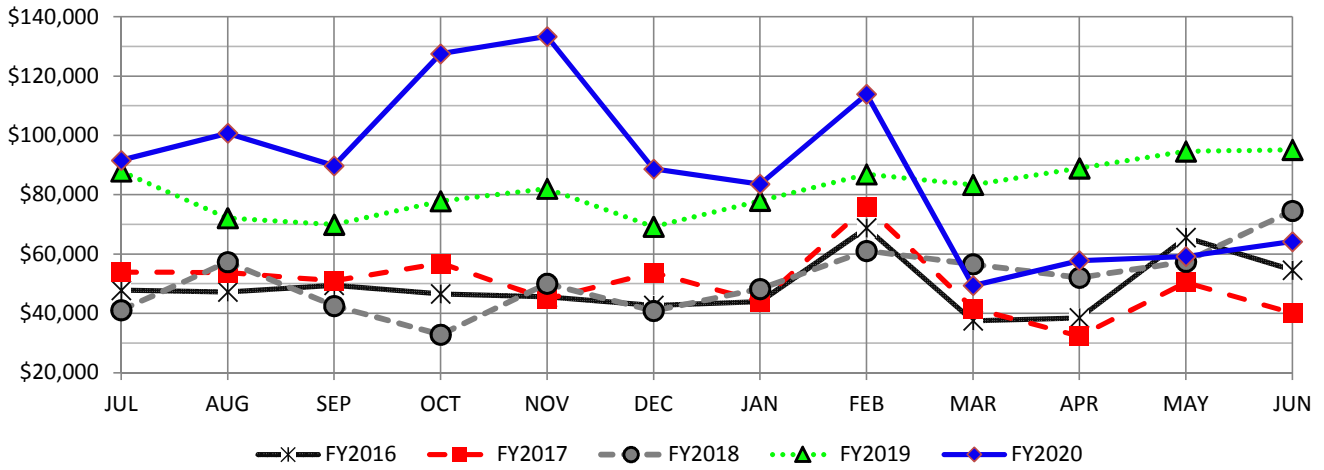
**FY 2019-2020
Gross Receipts Distribution by Sector**



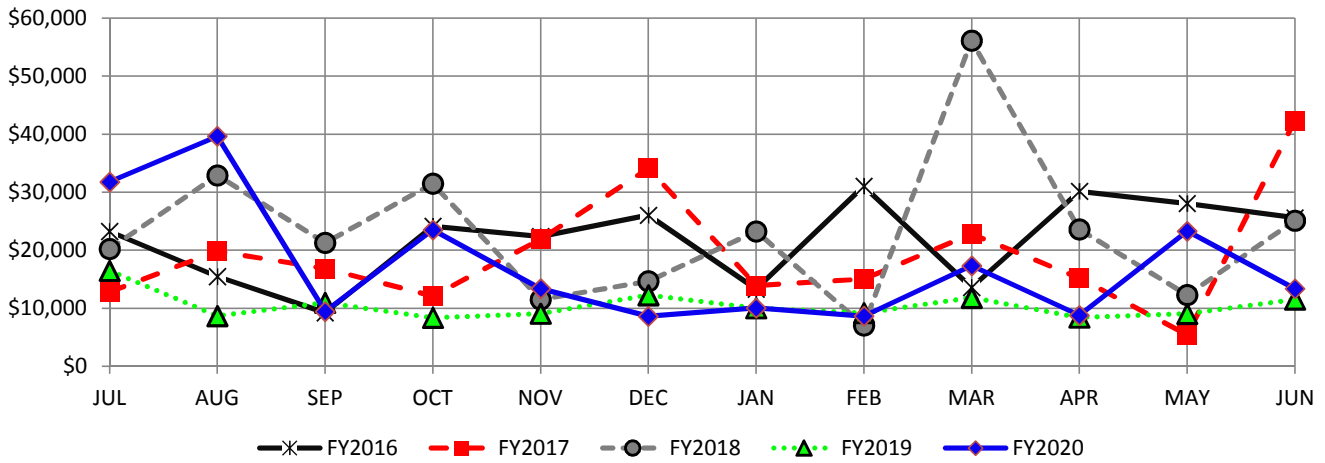
Other Sectors Includes:
Real Estate, Wholesale,
Prof & Tech Services, Internet Sales,
Agriculture, Art, Financial & Insurance Services, Education, Transportation, Utilities,
Compensating Tax, Administrative & Support Services, Public Administration and Information Services

**AZTEC GROSS RECEIPTS DISTRIBUTION
FISCAL YEAR 2020: JUNE 2020
SELECTED REPORTING SECTORS**

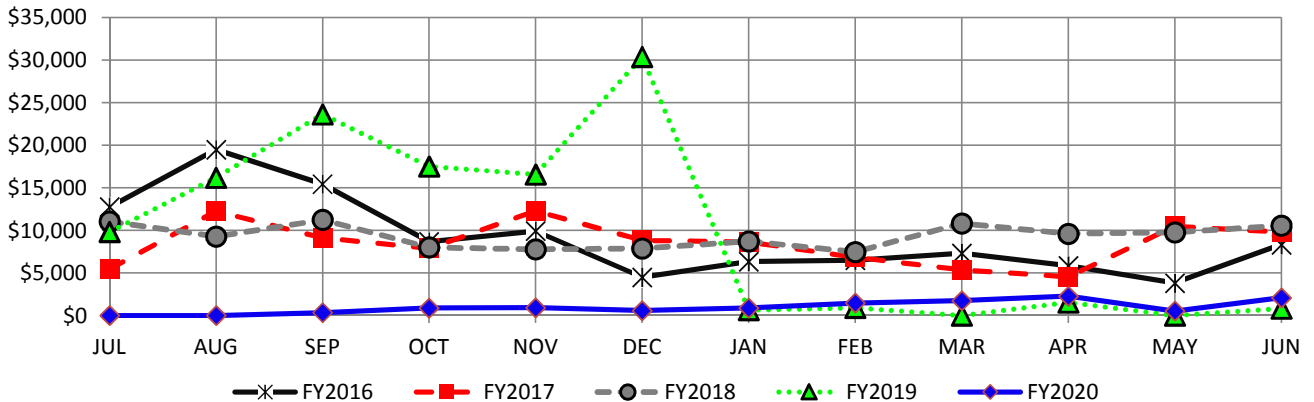
GROSS RECEIPTS MONTHLY DISTRIBUTION: RETAIL



GROSS RECEIPTS MONTHLY DISTRIBUTION: CONSTRUCTION

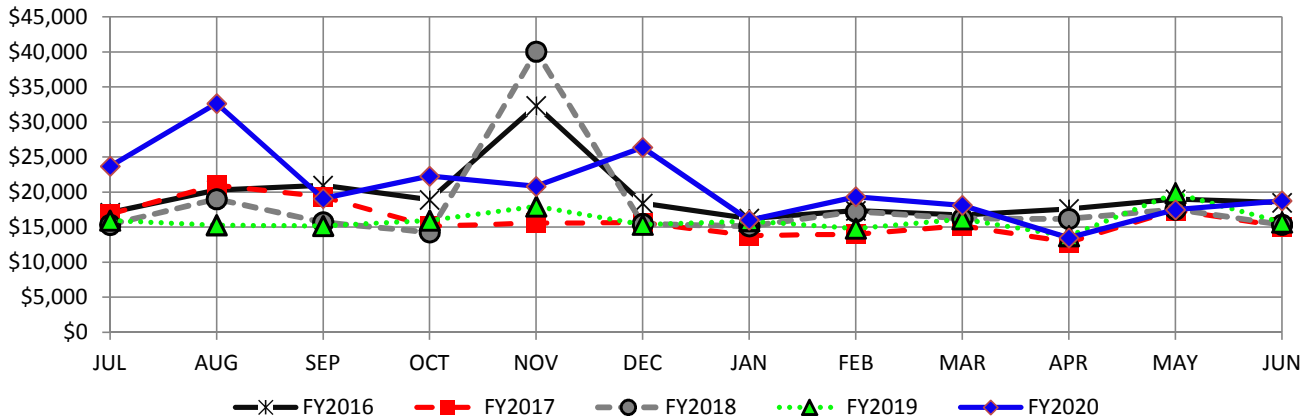


GROSS RECEIPTS MONTHLY DISTRIBUTION: MINING



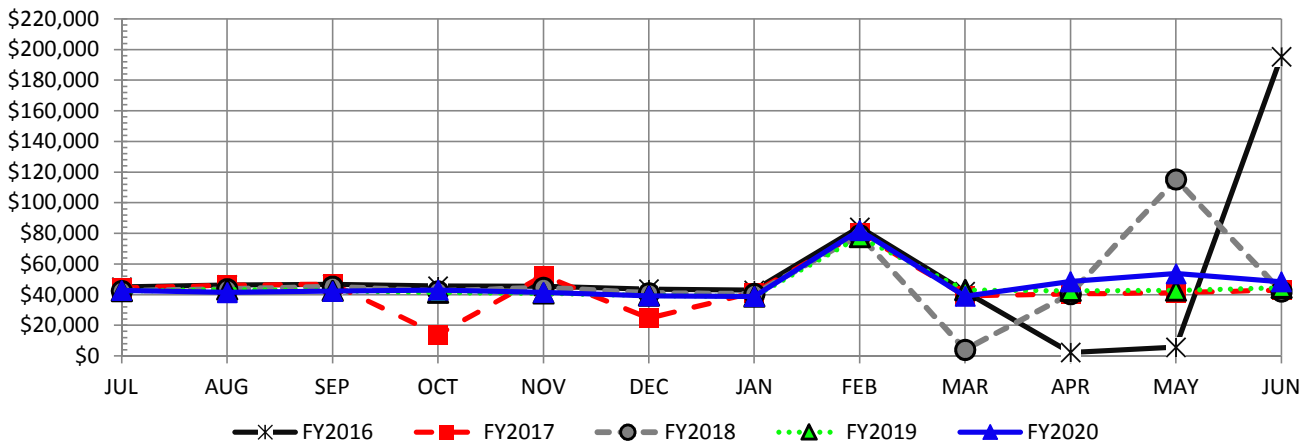
**AZTEC GROSS RECEIPTS DISTRIBUTION
FISCAL YEAR 2020: JUNE 2020
SELECTED REPORTING SECTORS**

GROSS RECEIPTS MONTHLY DISTRIBUTION: MANUFACTURING

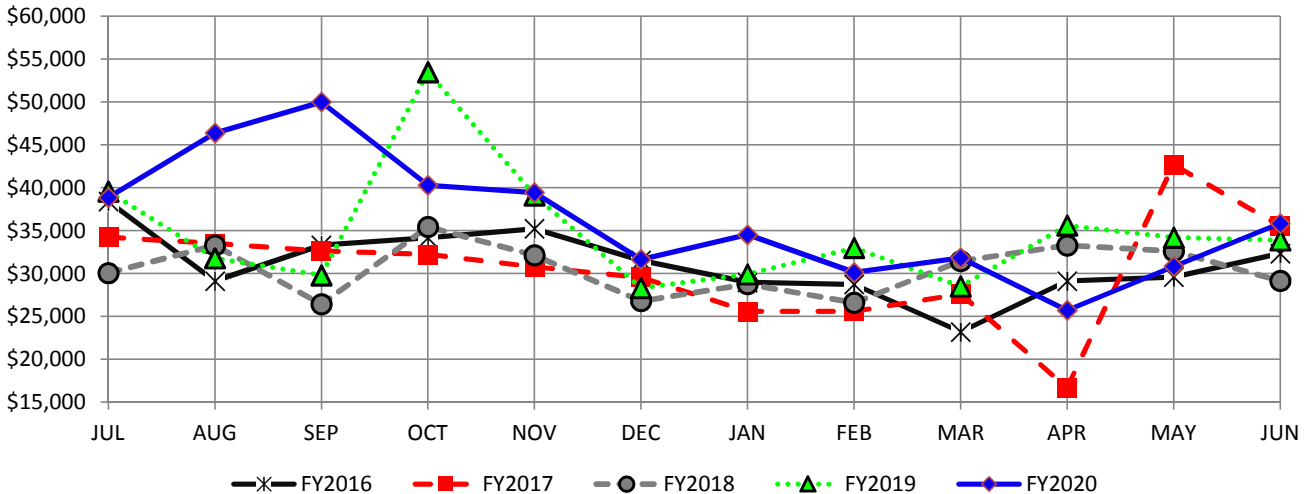


GROSS RECEIPTS MONTHLY DISTRIBUTION: GROCERIES

*June 2016 includes correction for Dec 14, Jan 15, Apr 16 & May 16
May 2018 includes correction for March 2018*

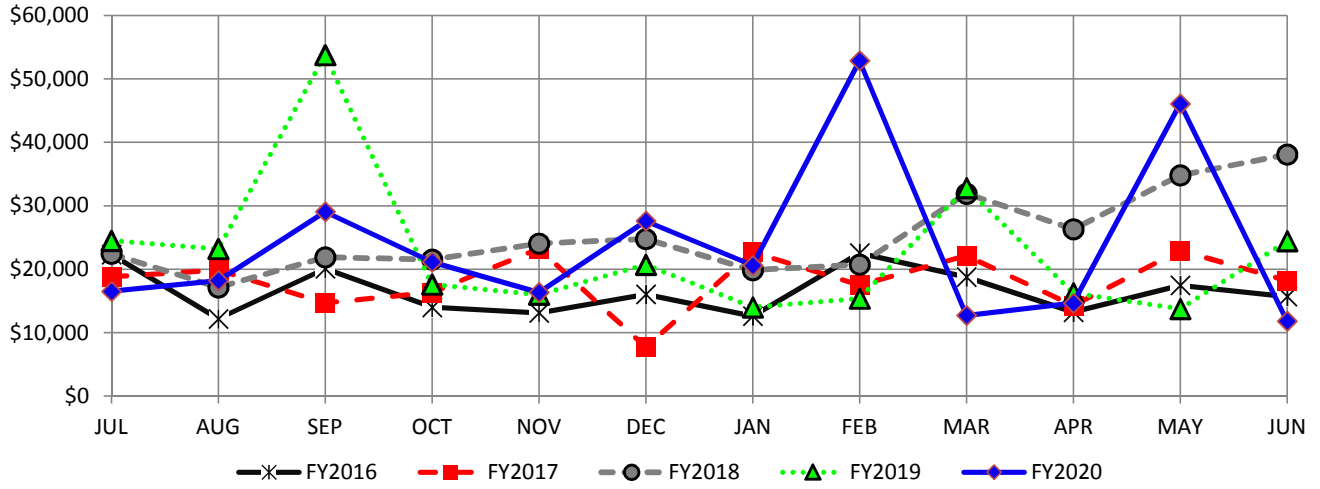


GROSS RECEIPTS MONTHLY DISTRIBUTION: ACCOMMODATION & FOOD



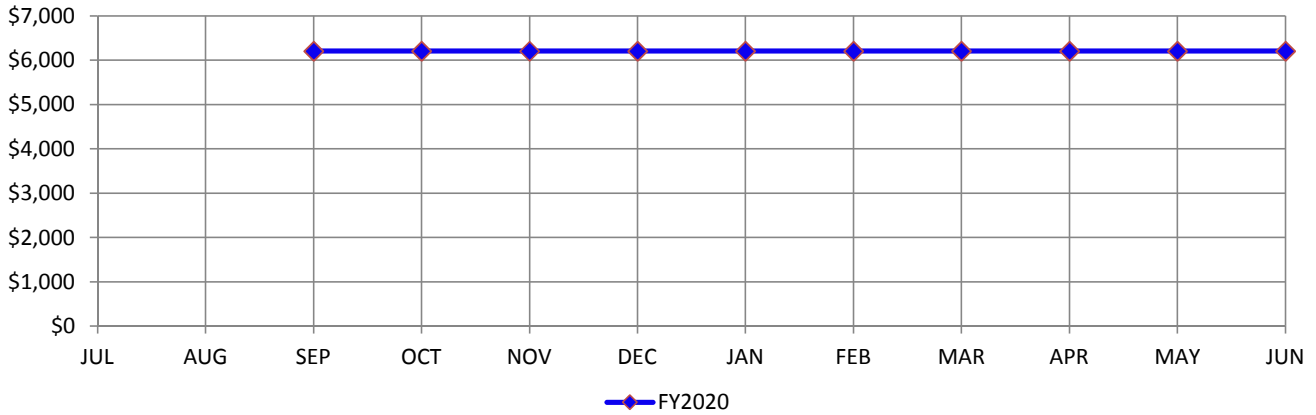
**AZTEC GROSS RECEIPTS DISTRIBUTION
FISCAL YEAR 2020: JUNE 2020
SELECTED REPORTING SECTORS**

GROSS RECEIPTS MONTHLY DISTRIBUTION: HEALTH CARE AND MEDICAL DISTRIBUTION



GROSS RECEIPTS MONTHLY DISTRIBUTION: INTERNET SALES DISTRIBUTION

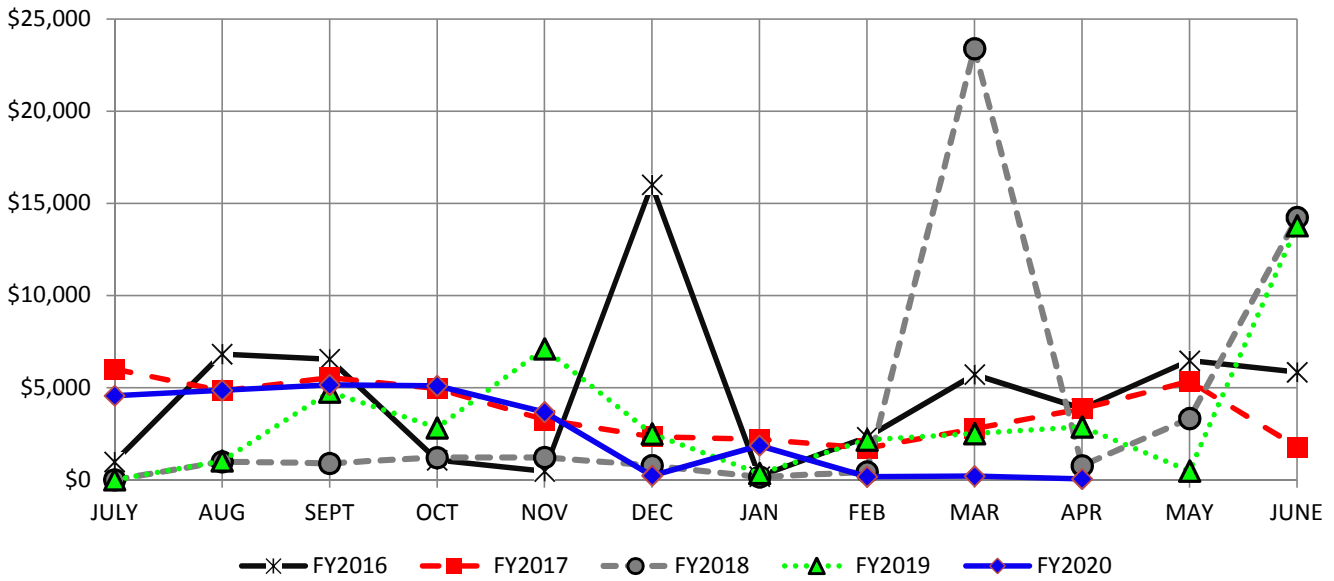
HB6 EFF 7/1/2019, FIRST DISTRIBUTION 9/2019
FY20 & 21 DISTRIBUTION BASED ON POPULATION



**CITY OF AZTEC
 LODGERS TAX as Reported through May 2020
 GAS TAX JUNE 2020**

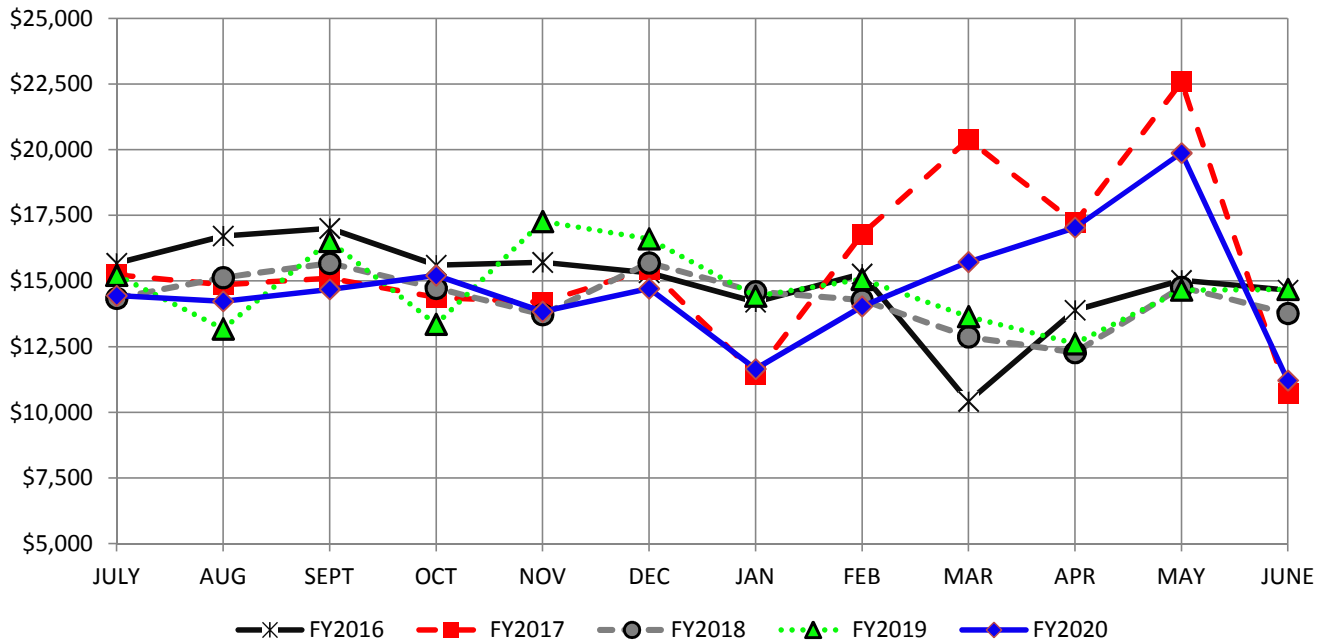
LODGERS TAX

Monthly revenue reports and tax are due by the 25th of the following month



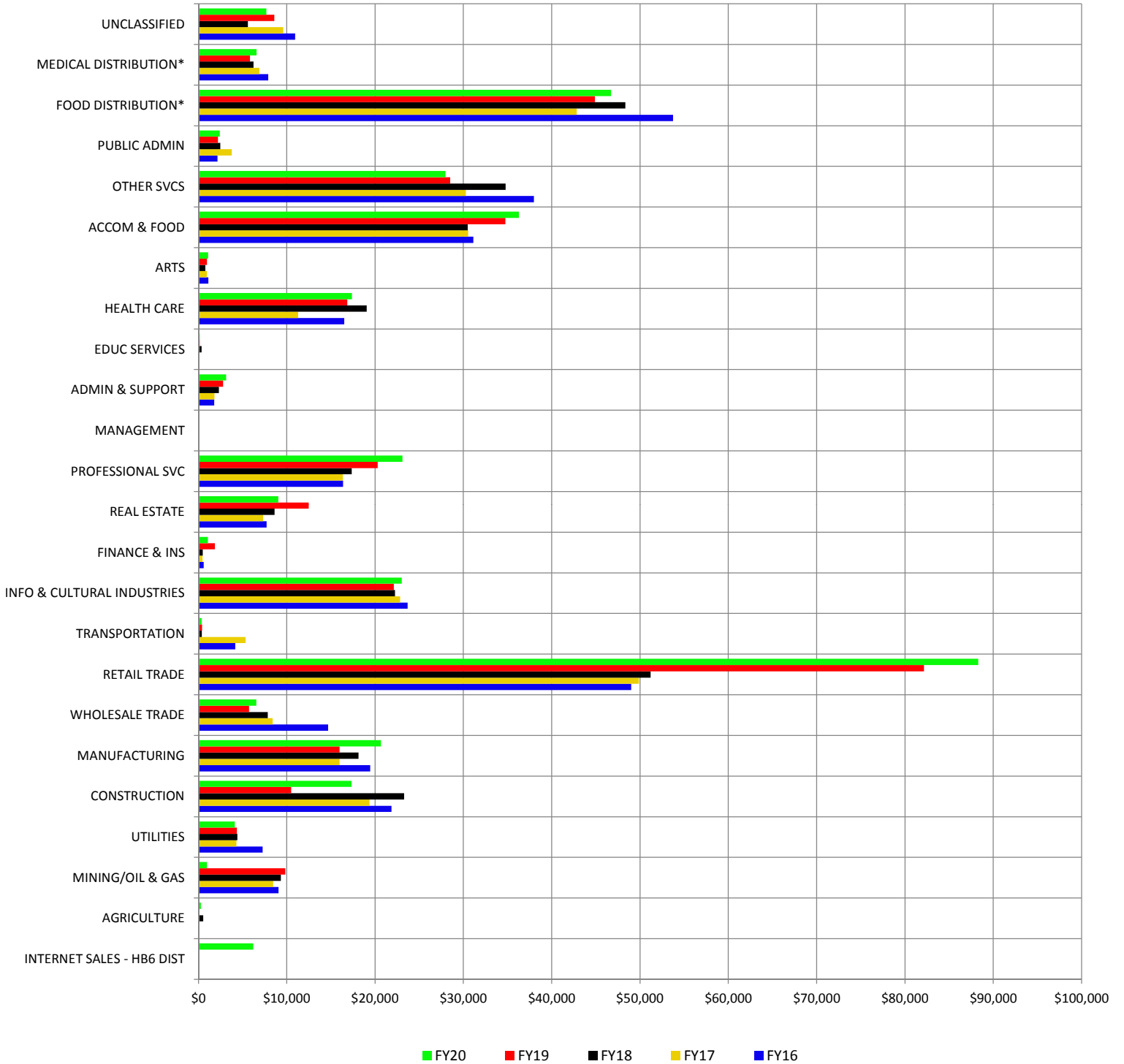
Amounts are based on reporting period after information is received by the City; tax payers may report late; causing unusual spikes or dips when graphing the receipts.

MUNICIPAL ROAD FUND: GASOLINE TAX



Amounts are based on when revenues are received by City; tax payers may submit late to the state or the state may experience delays in distributing funds to the City - resulting in no receipts or unusual spikes or dips on the graph

GRT Sector Averages FY16 through FY20



**CITY OF AZTEC
GROSS RECEIPTS TAXES
RECEIPTS BY INDUSTRY: MONTHLY AVERAGES**

	FY15	FY16	FY17	FY18	FY19	FY20
INTERNET SALES - HB6 DIST						6,208
AGRICULTURE	48	100	-	535	-	277
MINING/OIL & GAS	25,171	9,070	8,451	9,343	9,826	971
UTILITIES	4,941	7,278	4,304	4,394	4,366	4,116
CONSTRUCTION	29,033	21,856	19,366	23,294	10,485	17,322
MANUFACTURING	12,772	19,447	15,983	18,120	15,974	20,669
WHOLESALE TRADE	19,041	14,671	8,409	7,849	5,719	6,541
RETAIL TRADE	47,877	49,013	49,883	51,208	82,146	88,302
TRANSPORTATION	5,808	4,174	5,329	389	413	345
INFO & CULTURAL INDUSTRIES	22,578	23,687	22,835	22,250	22,112	23,027
FINANCE & INS	434	583	456	478	1,861	1,059
REAL ESTATE	14,034	7,715	7,316	8,615	12,475	9,034
PROFESSIONAL SVC	16,354	16,379	16,344	17,361	20,291	23,108
MANAGEMENT	-	-	-	-	-	-
ADMIN & SUPPORT	3,275	1,795	1,818	2,319	2,795	3,133
EDUC SERVICES	12	34	128	351	155	138
HEALTH CARE	19,995	16,501	11,292	19,047	16,855	17,388
ARTS	1,037	1,110	951	767	954	1,086
ACCOM & FOOD	35,301	31,133	30,543	30,490	34,754	36,283
OTHER SVCS	70,358	37,986	30,286	34,777	28,495	27,982
PUBLIC ADMIN	1,951	2,167	3,771	2,482	2,202	2,431
FOOD DISTRIBUTION*	41,553	53,741	42,820	48,345	44,901	46,718
MEDICAL DISTRIBUTION*	7,173	7,892	6,897	6,242	5,835	6,572
UNCLASSIFIED	17,607	10,937	9,601	5,586	8,599	7,695
TOTAL	396,353	337,269	296,782	314,239	331,213	350,404
% change in average distribution	-2%	-15%	-12%	6%	5%	6%

CITY OF AZTEC
GROSS RECEIPTS TAXES
GROSS REVENUES (FROM NM TRD RPT 500)

	FY2019				FY2020			
	GROSS RECEIPTS	MATCHED TAXABLE GROSS RECEIPTS	FOOD HOLD HARMLESS SALES	MEDICAL HOLD HARMLESS SALES	GROSS RECEIPTS	MATCHED TAXABLE GROSS RECEIPTS	FOOD HOLD HARMLESS SALES	MEDICAL HOLD HARMLESS SALES
JUL	15,380,094.00	10,022,748.00	1,394,126.00	174,921.00	16,206,896.00	10,165,653.00	1,299,346.00	176,531.00
AUG	14,843,954.00	9,107,909.00	1,428,629.00	173,620.00	19,362,842.00	11,240,673.00	1,260,081.00	152,023.00
SEP	14,991,415.00	9,856,030.00	1,399,759.00	175,211.00	18,604,841.00	9,129,929.00	1,284,512.00	260,697.00
OCT	18,143,828.00	9,519,881.00	1,358,153.00	183,542.00	16,926,771.00	10,539,161.00	1,308,124.00	179,990.00
NOV	13,445,384.00	9,240,903.00	1,343,122.00	165,299.00	15,959,151.21	10,747,594.89	1,263,302.39	170,725.87
DEC	14,522,976.00	9,034,915.00	1,298,360.00	172,916.00	14,570,634.74	8,992,988.68	1,193,648.83	223,614.60
JAN	15,013,152.00	8,169,158.00	1,274,504.00	161,568.00	13,514,847.97	8,284,388.12	1,181,331.07	207,066.36
FEB	20,350,571.00	8,607,765.00	2,554,463.00	196,549.00	21,022,371.72	10,342,729.45	2,492,996.91	247,358.09
MAR	14,813,407.00	8,252,465.00	1,309,067.00	184,234.00	13,810,697.52	7,506,788.62	1,185,683.17	196,241.73
APR	15,015,411.00	8,056,652.00	1,294,794.00	176,065.00	12,479,799.52	6,461,282.60	1,476,177.42	153,253.38
MAY	15,489,470.00	9,172,853.00	1,297,861.00	229,797.00	19,168,895.42	7,923,969.63	1,634,676.24	236,366.47
JUN	16,375,042.00	9,023,719.34	1,353,305.00	242,927.00	13,505,667.40	7,286,663.45	1,472,792.31	195,068.59
TOTAL	188,384,704.00	108,064,998.34	17,306,143.00	2,236,649.00	195,133,415.50	108,621,821.44	17,052,671.34	2,398,936.09
AVG.	15,698,725	9,005,417	1,442,179	186,387	16,261,118	9,051,818	1,421,056	199,911
	Eff 1/2019: Local GRT rate increased from 3.0375% to 3.2875%; total rate from 8% to 8.25%							