

UNDERGROUND TELEPHONE & TELEVISION.  
 TELEPHONE - 2'-0" MIN. COVER  
 CABLE T.V. - 2'-0" MIN. COVER

**NOTES**

- 1) FOR SANITARY SEWER AND/OR WATERLINES GREATER THAN 16" IN DIAMETER, UTILITY LOCATIONS MUST BE ADJUSTED TO MAINTAIN MINIMUM SEPARATION OUTSIDE, BETWEEN SEWER AND WATERLINES IN WHICH CASE THE SANITARY WILL BE RELOCATED TO THE SOUTH OR EAST.
- 2) A MINIMUM OF 3' SEPARATION BETWEEN WATERLINE, SEWER LINE AND TELEPHONE, ELECTRIC OR CABLE T.V. LINES IS REQUIRED. A MINIMUM OF 6" VERTICAL CLEARANCE REQUIRED WHEN CROSSING OCCURS. A 2" SEPARATION IS ALLOWED BETWEEN WATERLINE AND MANHOLES FOR THESE UTILITIES.
- 3) STRICT ADHERENCE TO THESE LOCATIONS MAY NOT ALWAYS BE PRACTICAL; LOCATIONS WILL BE RESOLVED BETWEEN THE INVOLVED UTILITIES.
- 4) MINIMUM COVER WILL BE MEASURED FROM FINISHED GRADE TO TOP OF UNDERGROUND LINES.
- 5) ANY CHANGES IN MINIMUM SEPARATION WILL BE APPROVED BY CITY ENGINEER.

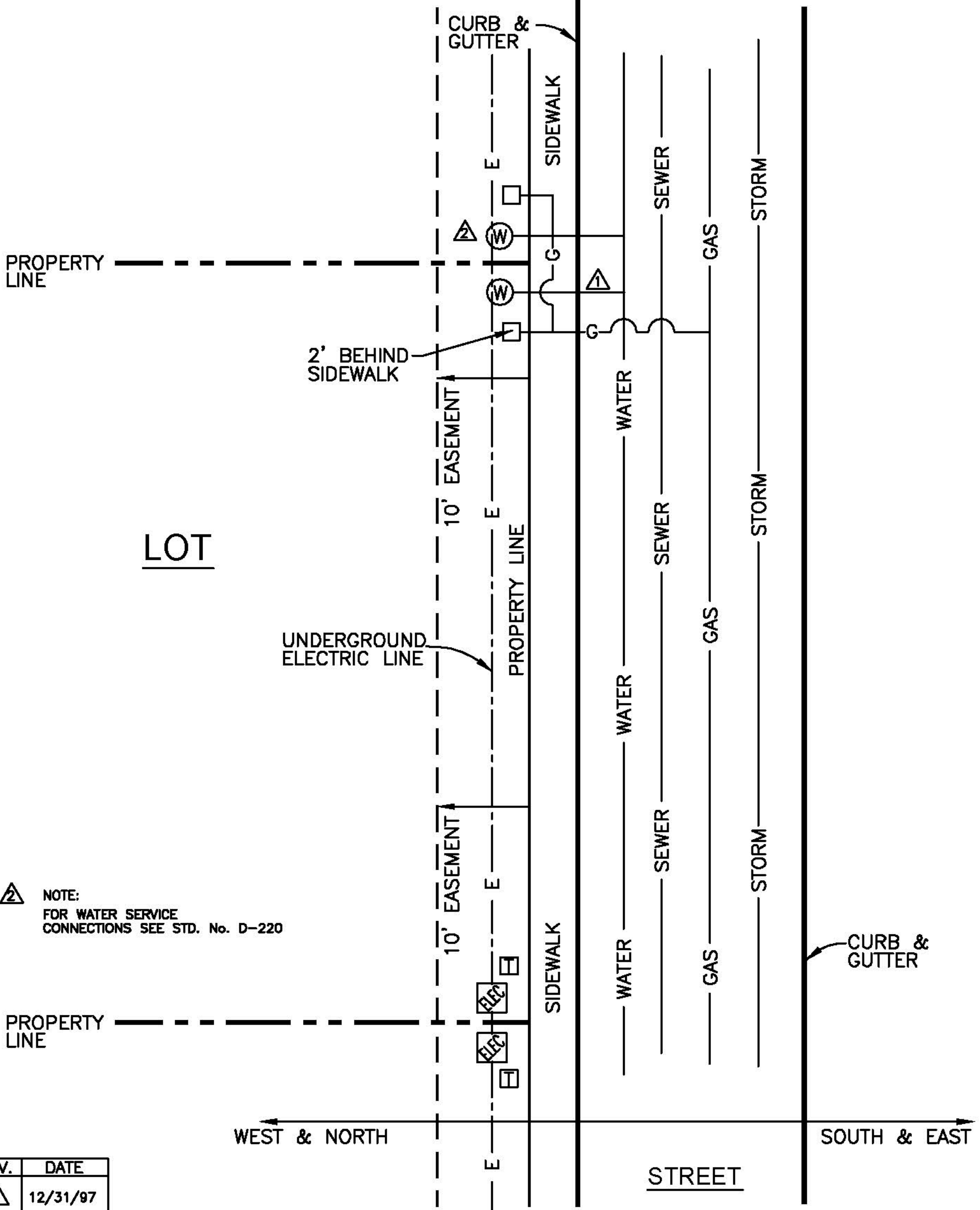
REV.	DATE
1	12/15/94
2	01/02/01

**CONSTRUCTION STANDARDS**

**GENERAL UTILITY LOCATION**

STANDARD No. D-401 SHEET 1 OF 2

**CITY OF AZTEC**  
**PUBLIC WORKS DEPARTMENT**



CONSTRUCTION STANDARDS

GENERAL UTILITY LOCATION

STANDARD No. D-401 SHEET 2 OF 2

CITY OF AZTEC  
PUBLIC WORKS DEPARTMENT