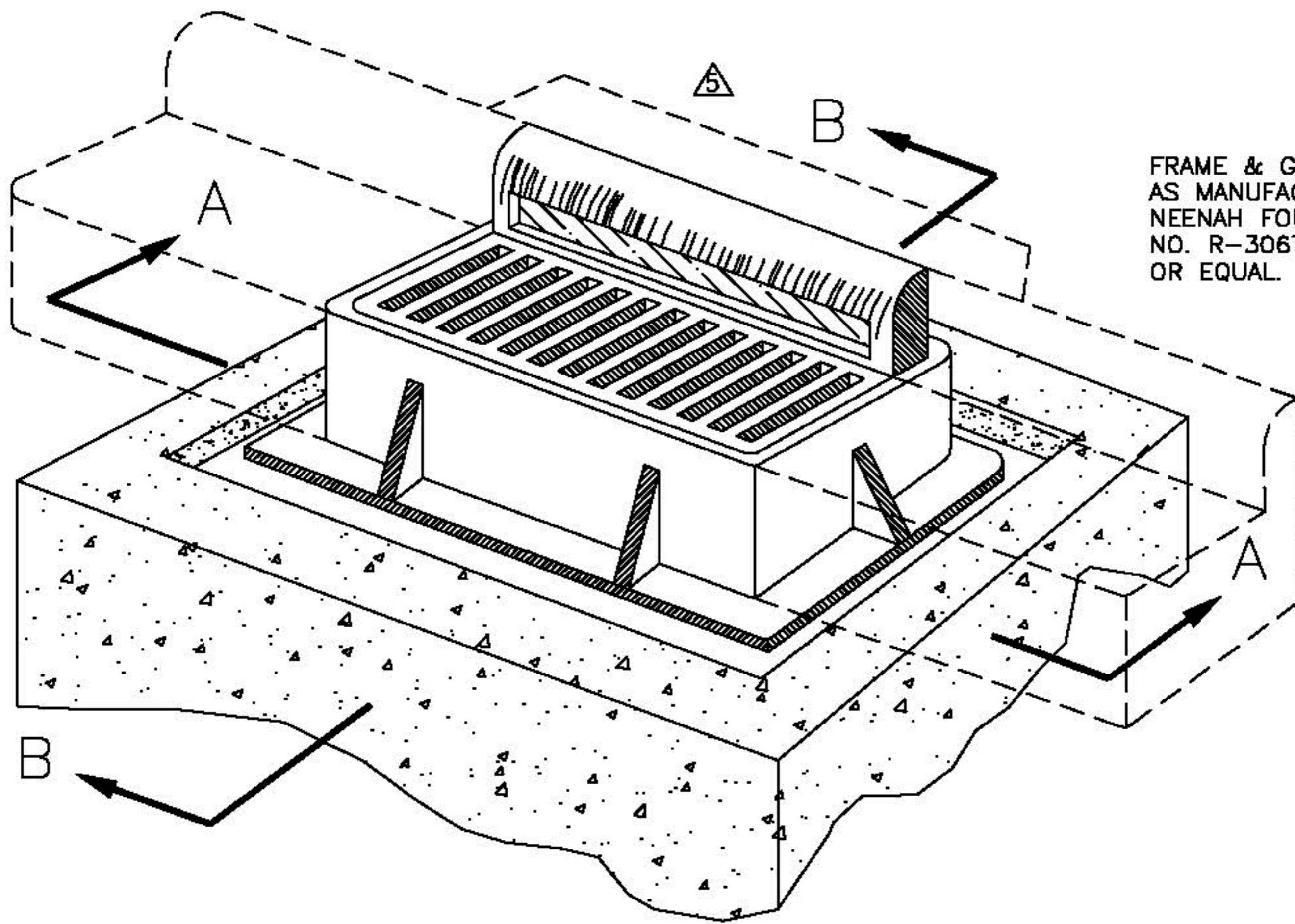
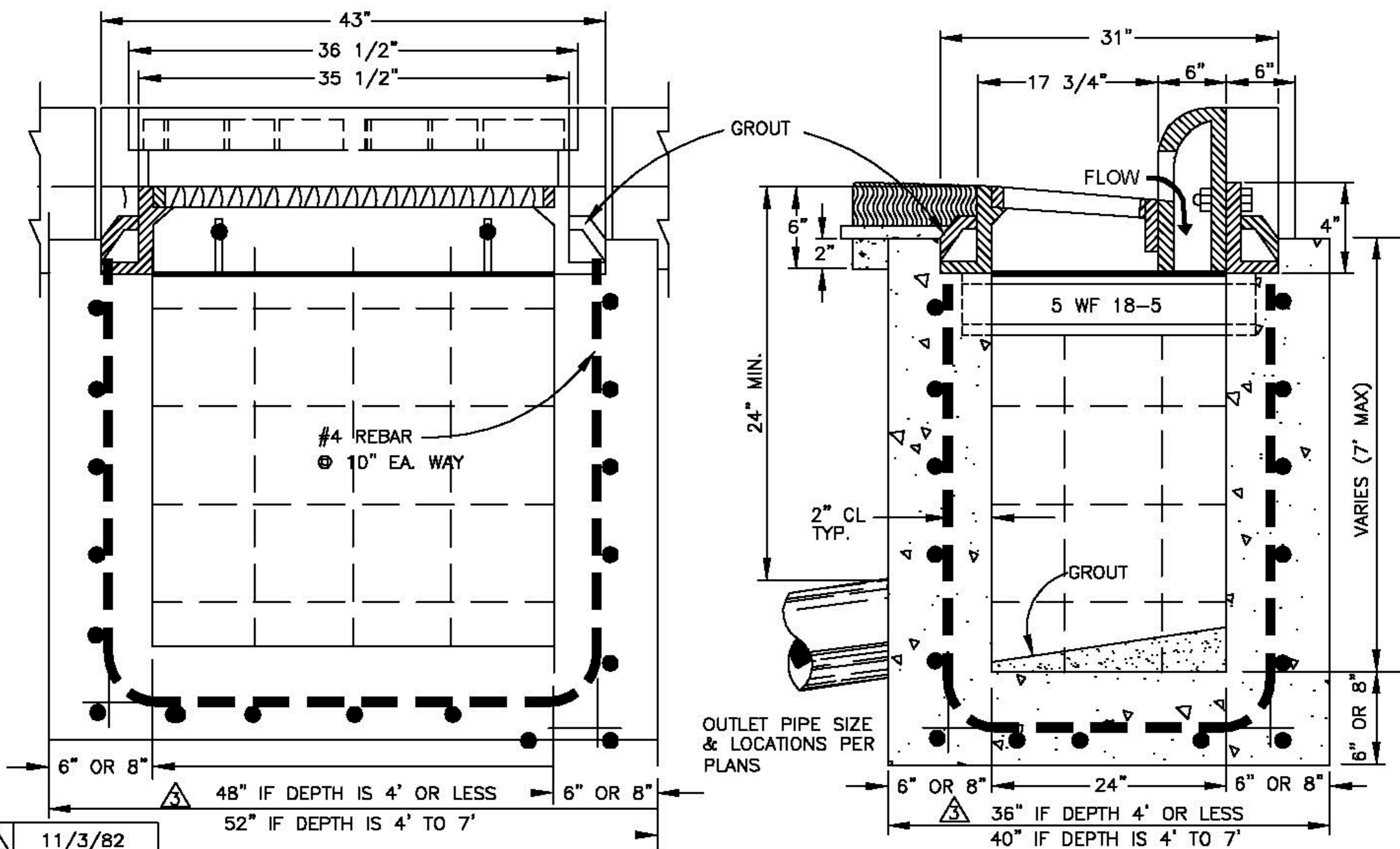


NOTE: ALL CURB INLETS SHALL BE DEPRESSED A MINIMUM OF 1 1/2".



FRAME & GRATE
AS MANUFACTURED BY
NEENAH FOUNDRY
NO. R-3067-V
OR EQUAL.



#4 REBAR
@ 10" EA. WAY

GROUT

FLOW

5 WF 18-5

2" CL
TYP.

GROUT

OUTLET PIPE SIZE
& LOCATIONS PER
PLANS

48" IF DEPTH IS 4' OR LESS
52" IF DEPTH IS 4' TO 7'

36" IF DEPTH 4' OR LESS
40" IF DEPTH IS 4' TO 7'

SECTION A-A

SECTION B-B

CONCRETE SHALL BE 3000 PSI 28 DAY STRENGTH.

- 11/3/82
- 11/16/83
- 11/6/87
- 01/07/04
- 12/16/04

CONSTRUCTION
STANDARDS

CURB INLET SINGLE

CITY OF
AZTEC
PUBLIC WORKS
DEPARTMENT