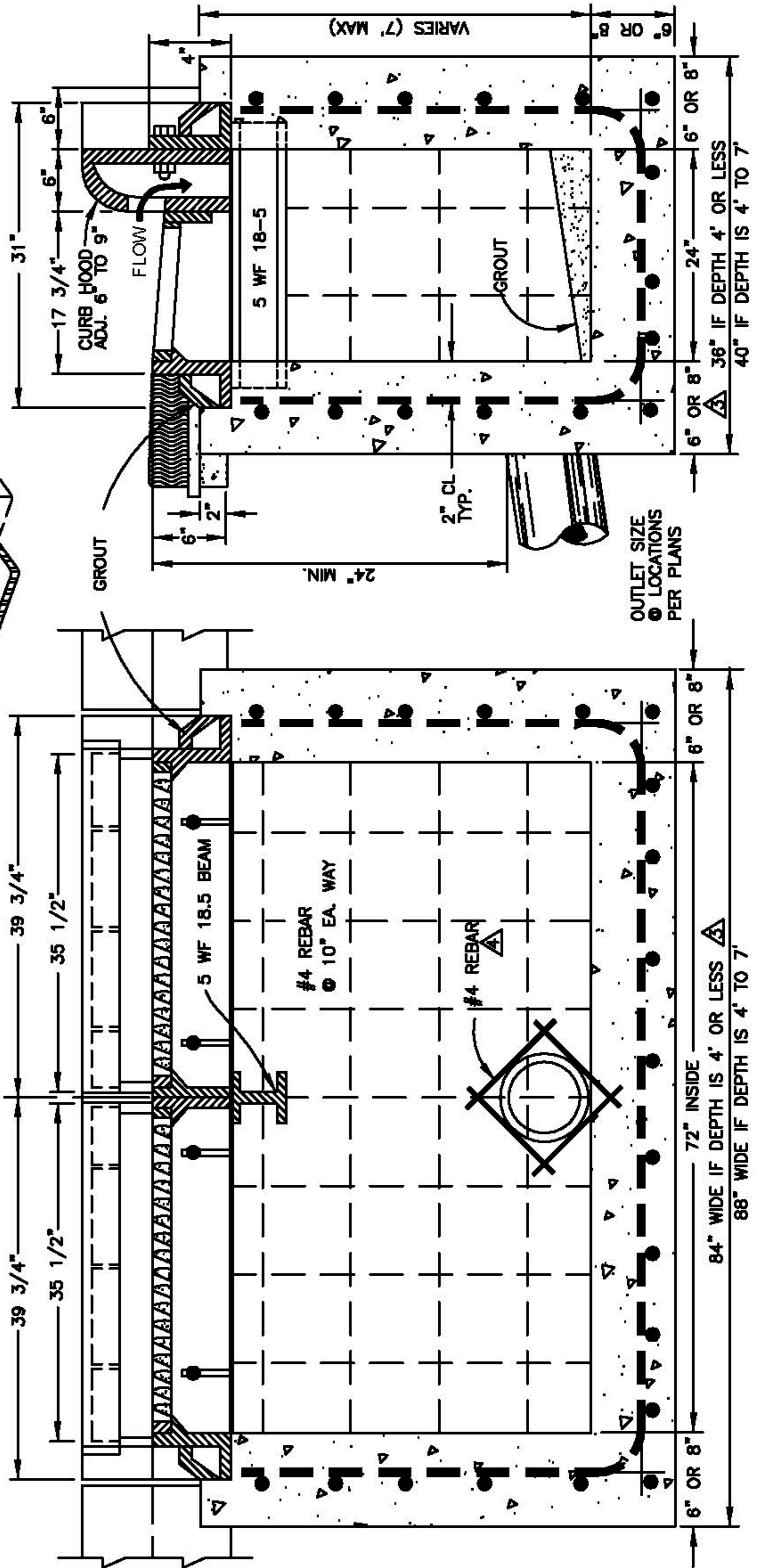


FRAME & GRATE
AS MANUFACTURED BY
NEENAH FOUNDRY
NO. R-3295-AV
OR EQUAL

FOR TRIPLE INLET
USE NEENAH
R-3295-BV OR
EQUAL

CONCRETE SHALL BE 3000
PSI 28 DAY STRENGTH.



SECTION B-B

SECTION A-A

REV.	DATE
△	11/3/82
△	11/22/83
△	11/6/87
△	12/8/89
△	11/6/90
△	01/07/04
△	12/16/04

CONSTRUCTION
STANDARDS

CURB INLET
DOUBLE

CITY OF
AZTEC
PUBLIC WORKS
DEPARTMENT