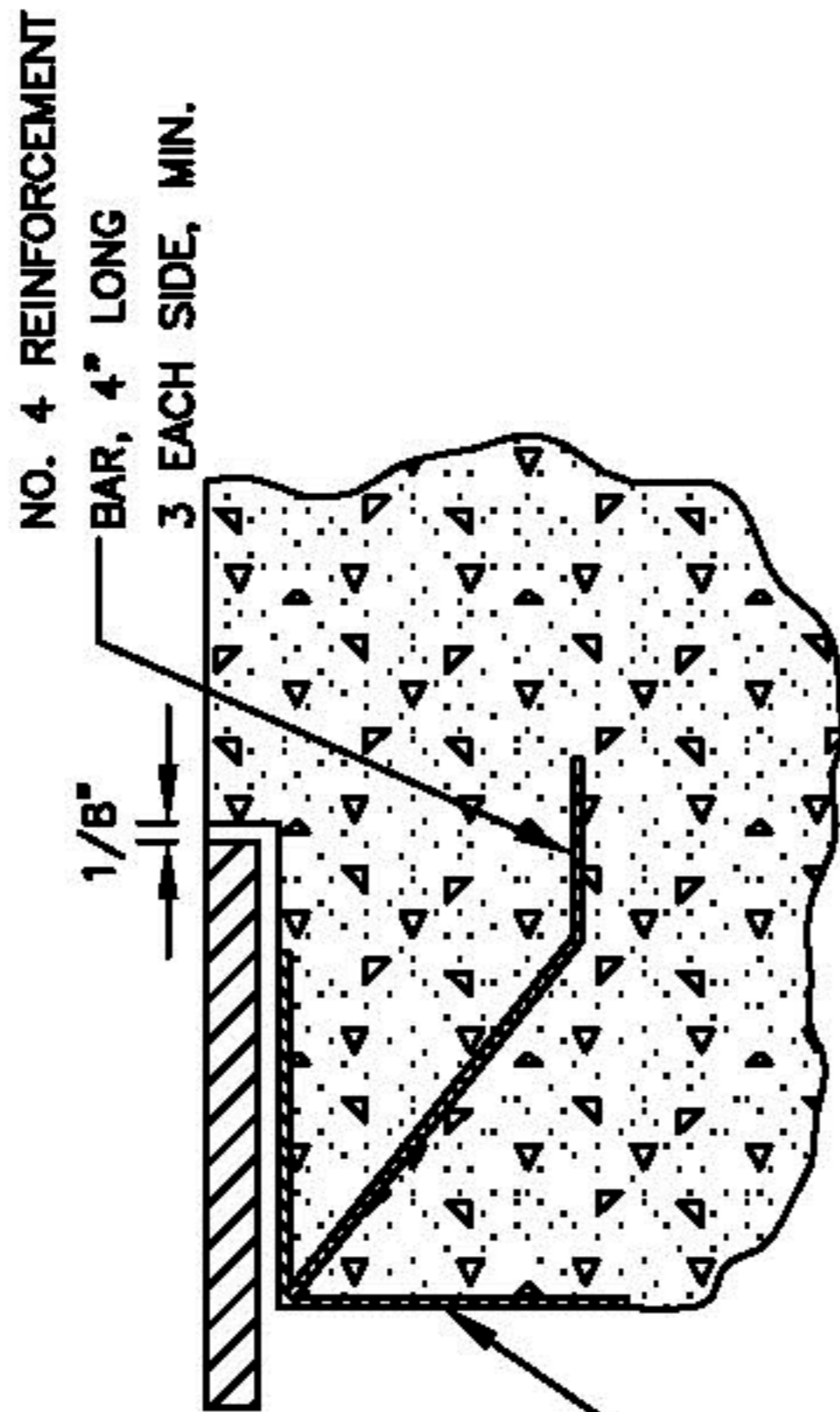
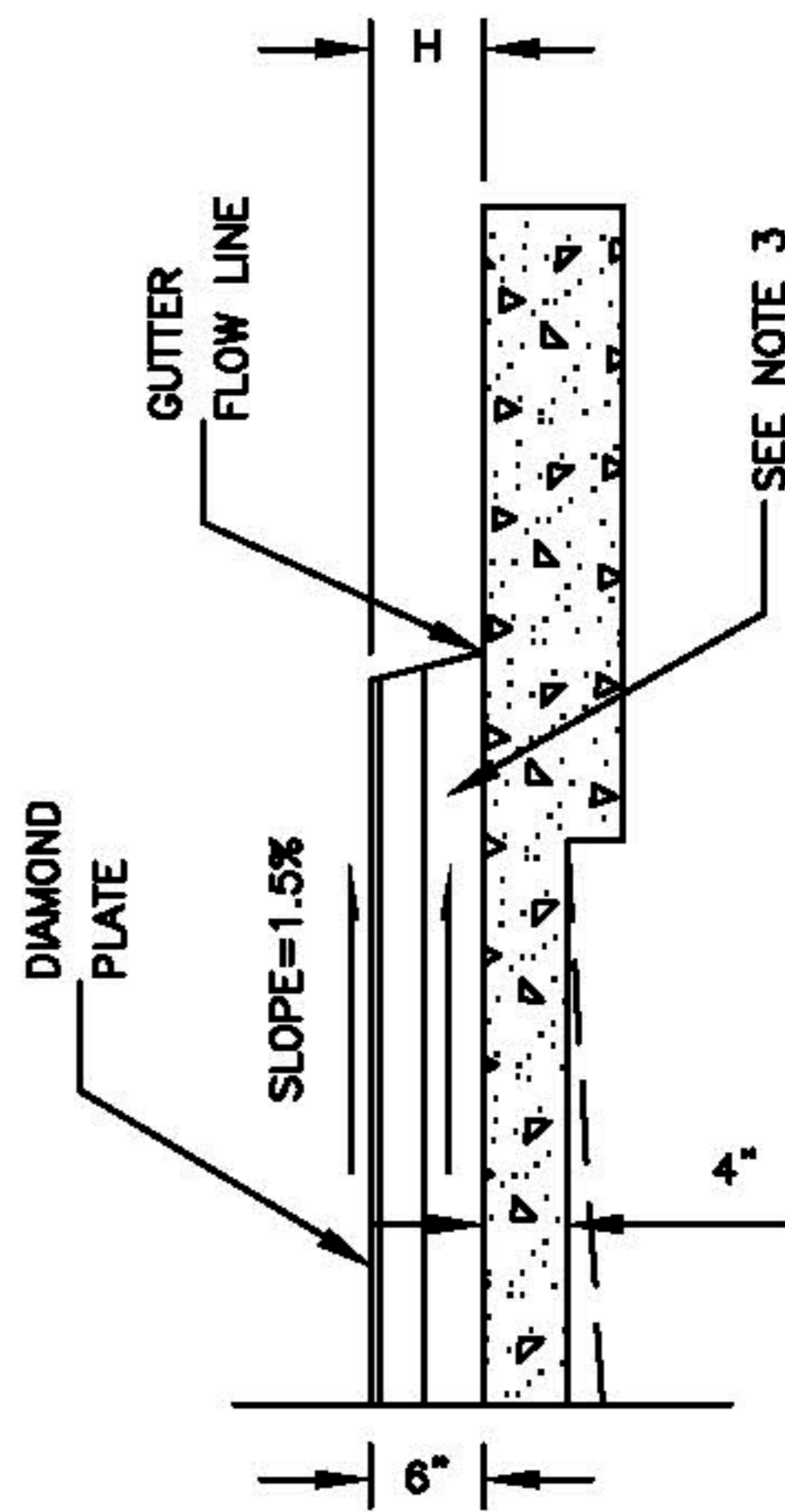


**NOTES**

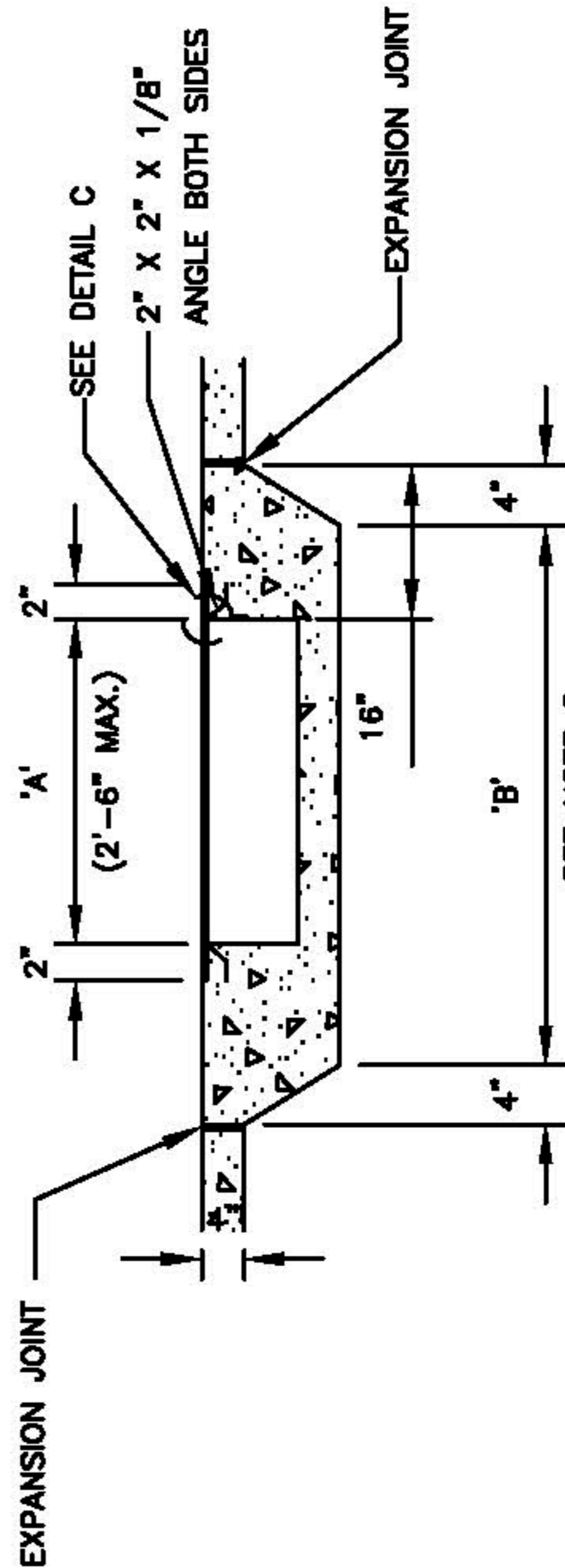
1. ANGLE EQUALS 45° SPECIFIED ON PLAN
2. DIMENSION 'B' EQUALS 'A' + 2'
3. (---) INDICATES DIRECTION OF FLOW
4. TWO COATS OR BLASTED & POWDOR COATED
5. R EQUALS 1" UNLESS OTHERWISE DIRECTED
6. H EQUALS CURB FACE HEIGHT
7. FOR ROLL CURB AND GUTTER, USE 2' TRANSITIONS TO VERTICAL CURB.
8. 3500 PSI



DETAIL C



SECTION 'B-B'



SECTION 'A-A'