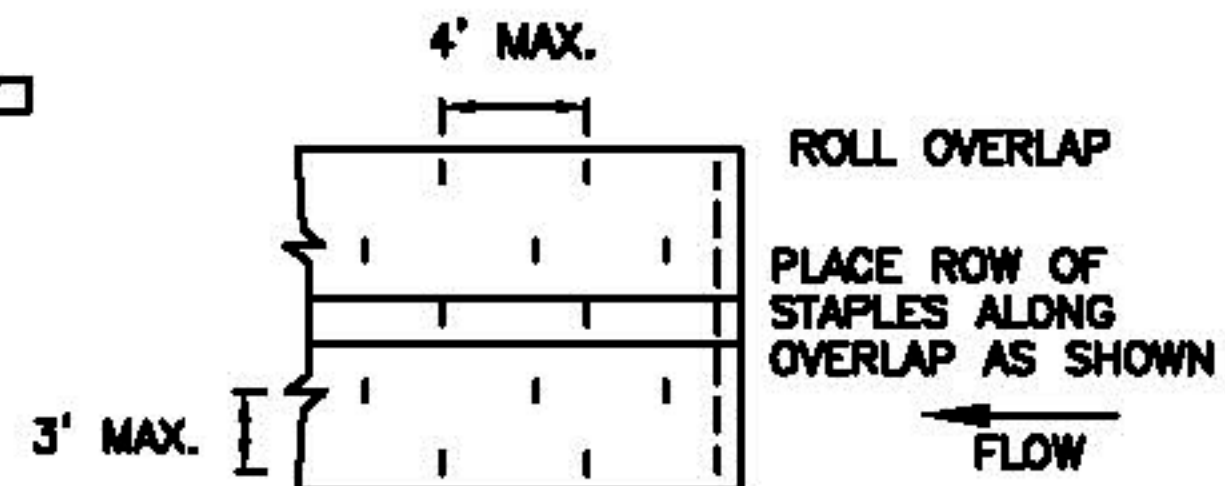
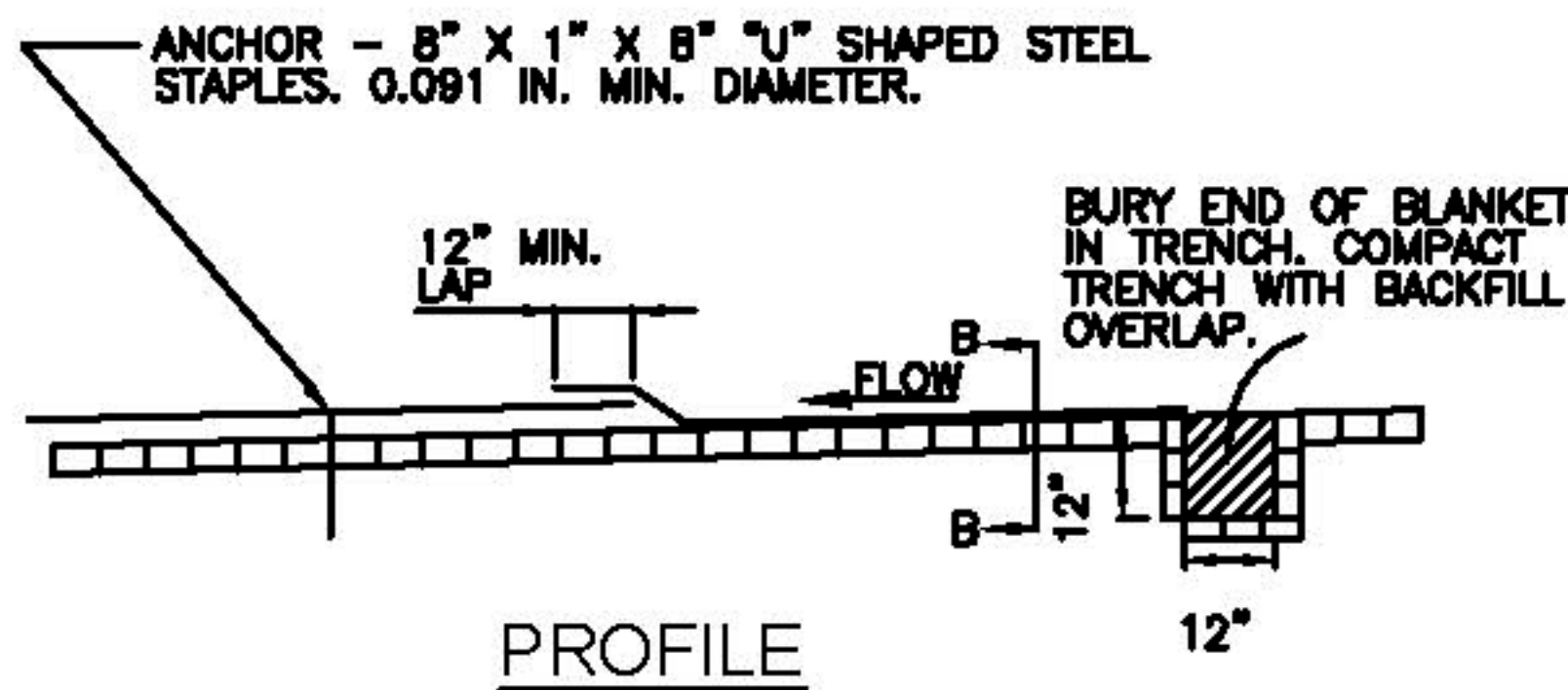


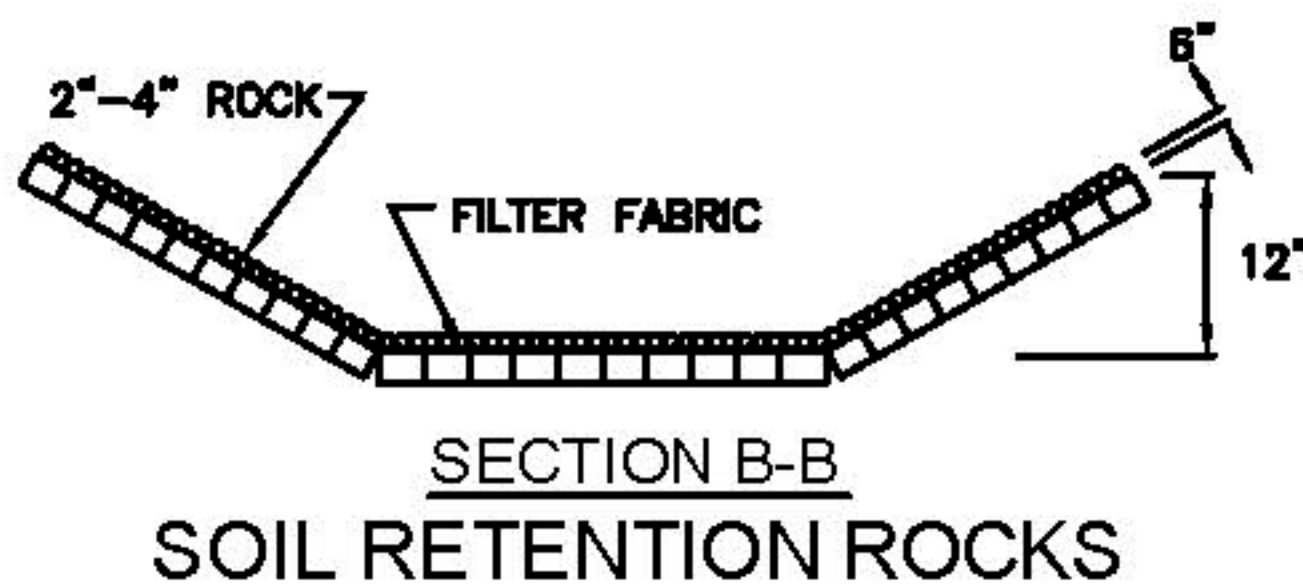
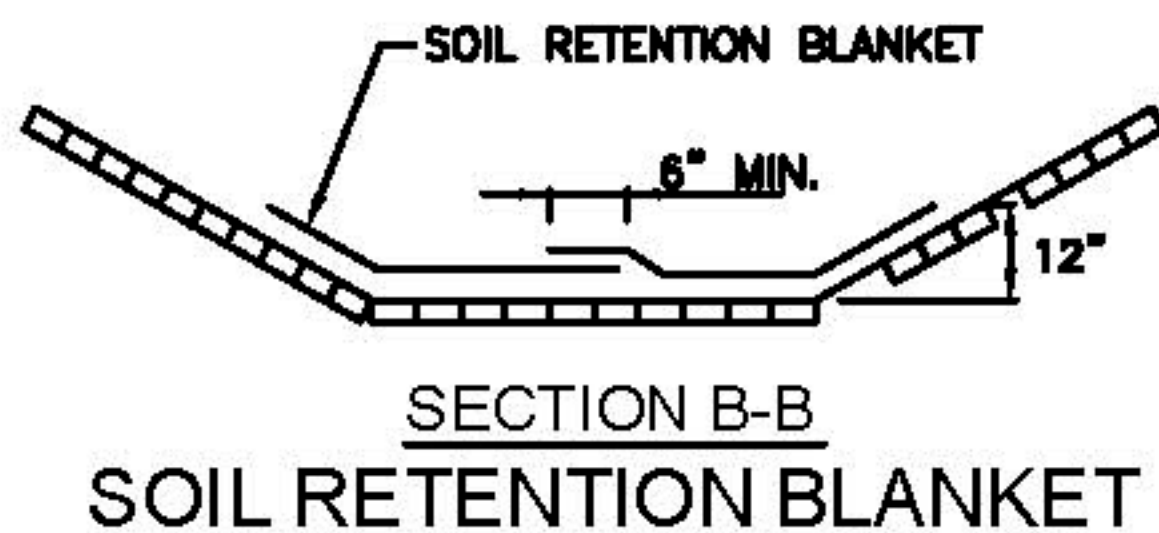
NOTES: CULVERT PROTECTION

1. WHEN CULVERT PROTECTION IS SPECIFIED, EITHER SOIL RETENTION BLANKETS OR SOIL RETENTION ROCK MAY BE PROVIDED.
2. THE CULVERT PROTECTION WIDTH REQUIRED SHALL BE IN ACCORDANCE WITH THESE DETAILS UNLESS SPECIFIED OTHERWISE.
3. THE SOIL RETENTION BLANKET INSTALLATION SHOWN OUTLINES MINIMUM REQUIREMENTS. MANUFACTURER'S RECOMMENDATIONS SHALL BE USED IF THEY ARE MORE STRINGENT.



USE 1" SPACING FOR STAPLES AT BEGINNING OF ROLL AND AT TRAVERSE OVERLAP.

SOIL RETENTION BLANKET STAPLE PATTERN



NOT TO SCALE

CONSTRUCTION STANDARDS

CULVERT PROTECTION

STANDARD No. D-620 SHEET 1 OF 1

CITY OF AZTEC
PUBLIC WORKS DEPARTMENT