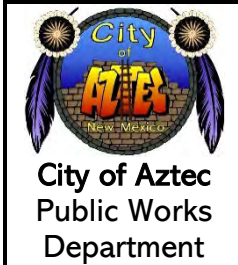
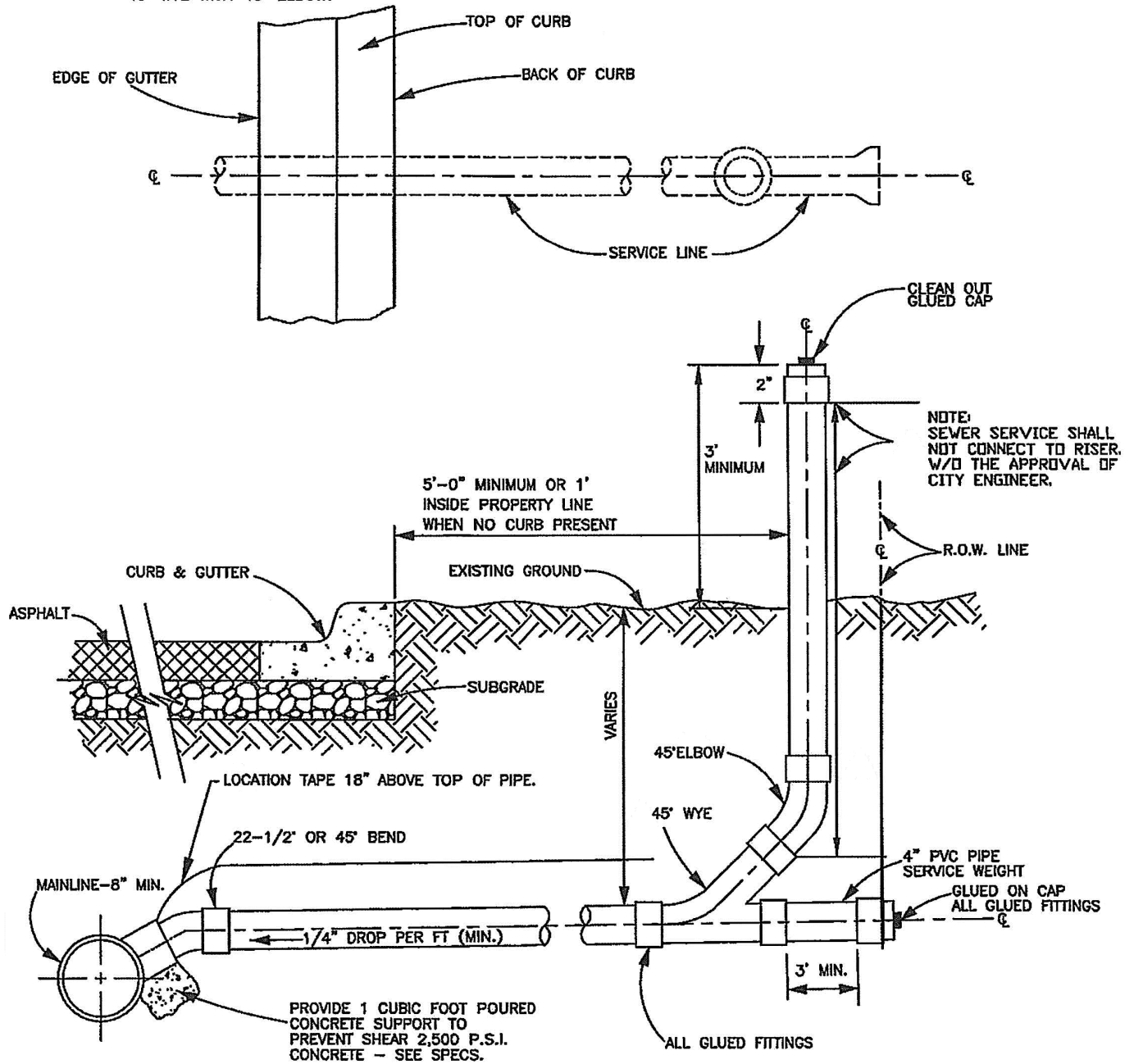


**NOTES:**

1. ALL SERVICE LINES SHALL CONFORM TO LOCAL PLUMBING CODE.
2. SERVICE LINES SHALL NOT PROTRUDE INTO SEWER MAIN.
3. SEWER SERVICE SHALL BE A COMBO OR 45° WYE WITH 45° ELBOW.



**SEWER SERVICE LOCATION**

---

**CONSTRUCTION STANDARDS**

**STANDARD NO. SS-14**

**SHEET 1 OF 1**

APP'D R. Salcido

DATE Oct. 11, 2023