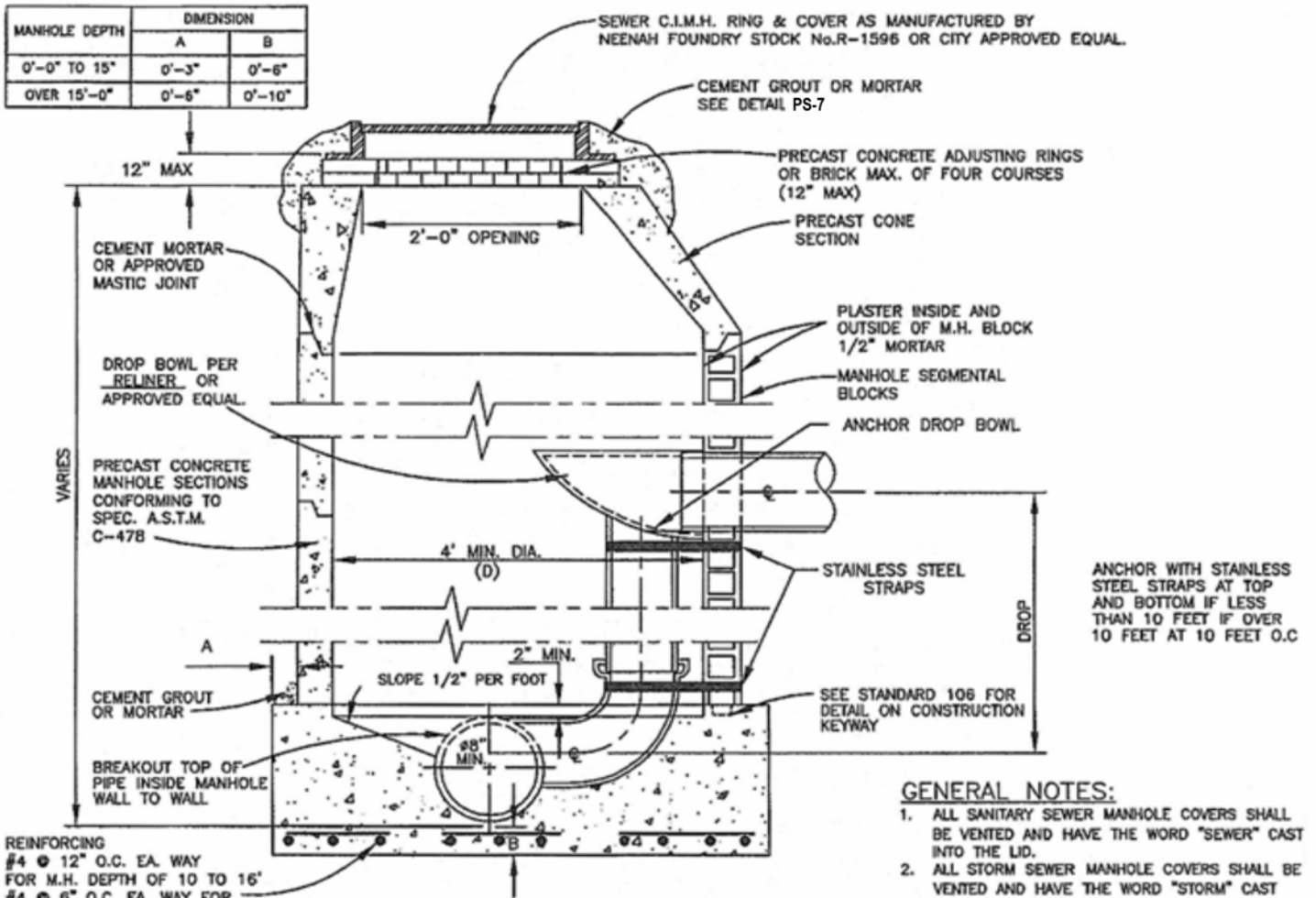
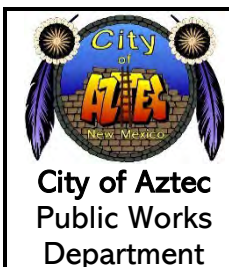
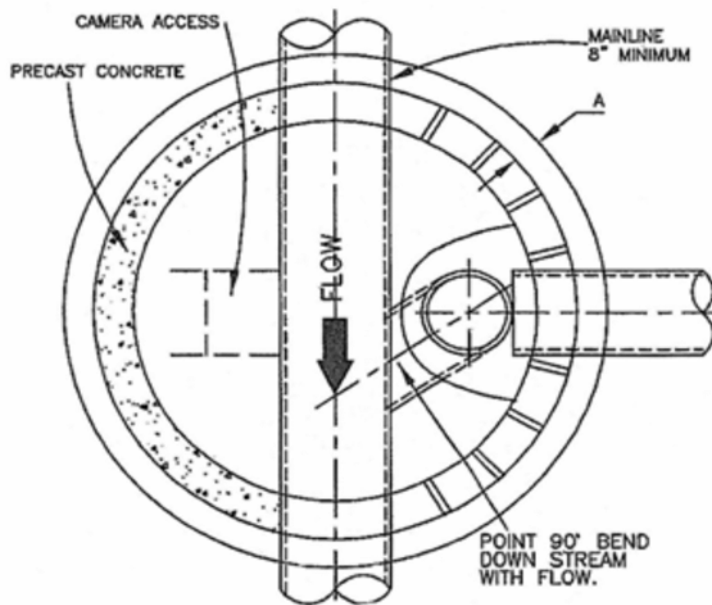


MANHOLE DEPTH	DIMENSION	
	A	B
0'-0" TO 15'	0'-3"	0'-6"
OVER 15'-0"	0'-6"	0'-10"



GENERAL NOTES:

1. ALL SANITARY SEWER MANHOLE COVERS SHALL BE VENTED AND HAVE THE WORD "SEWER" CAST INTO THE LID.
2. ALL STORM SEWER MANHOLE COVERS SHALL BE VENTED AND HAVE THE WORD "STORM" CAST INTO THE LID.
3. COMPACT BACKFILL TO 95% OF MODIFIED PROCTOR.
4. POSITION M.H. OPENING OVER THE UPSTREAM SIDE OF LINE.
5. PIPE PENETRATION INTO M.H. SHALL BE FLUSH TO 2" MAX., MEASURED AT SPRING LINE OF PIPE.
6. MANHOLE COVER SHALL HAVE A 5/8" MIN TO 1" MAX DIAMETER VENT HOLE CENTERED IN COVER.
7. DROP DISTANCE VARIES.
8. ALL LIFTING HOLES AND GAPS BETWEEN MANHOLE RINGS AND LID, ETC... SHOULD BE FILLED WITH NON SHRINK GROUT.
9. MANHOLES IN A NON-PAVED AREA SHALL HAVE A 2FT CONCRETE APRON AROUND LID (SEE DETAIL) OR BE RAISED A MIN. 6" OR AS DIRECTED BY THE CITY ENGINEER.
10. FIBERGLASS MANHOLES SHALL BE MANUFACTURED FROM COMMERCIAL GRADE POLYESTER RESIN OR OTHER SUITABLE POLYESTER OR VINYL ESTER RESINS WITH FIBERGLASS REINFORCEMENTS. MANHOLE SHALL BE A ONE PIECE UNIT MANUFACTURED TO MEET OF EXCEED ALL SPECIFICATION OF A.S.T.M. D-3753 LATEST EDITION. FIBERGLASS MANHOLE MANUFACTURER SHALL DEMONSTRATE CONTINUED EXPERIENCE AS A MANUFACTURER OF FIBERGLASS WASTEWATER PRODUCTS FOR A PERIOD OF NOT LESS THAN FIVE YEARS. IN ADDITION ALL APPROVED MANHOLE MANUFACTURERS SHALL BE ISO9001.
11. SEE STANDARD SS-7 FOR PLACEMENT OF MANHOLE STEPS.



**DROP MANHOLE
TYPE "D"**

CONSTRUCTION STANDARDS

STANDARD NO. SS-3

SHEET 1 OF 1

APP'D R. Salcido
DATE Oct. 11, 2023