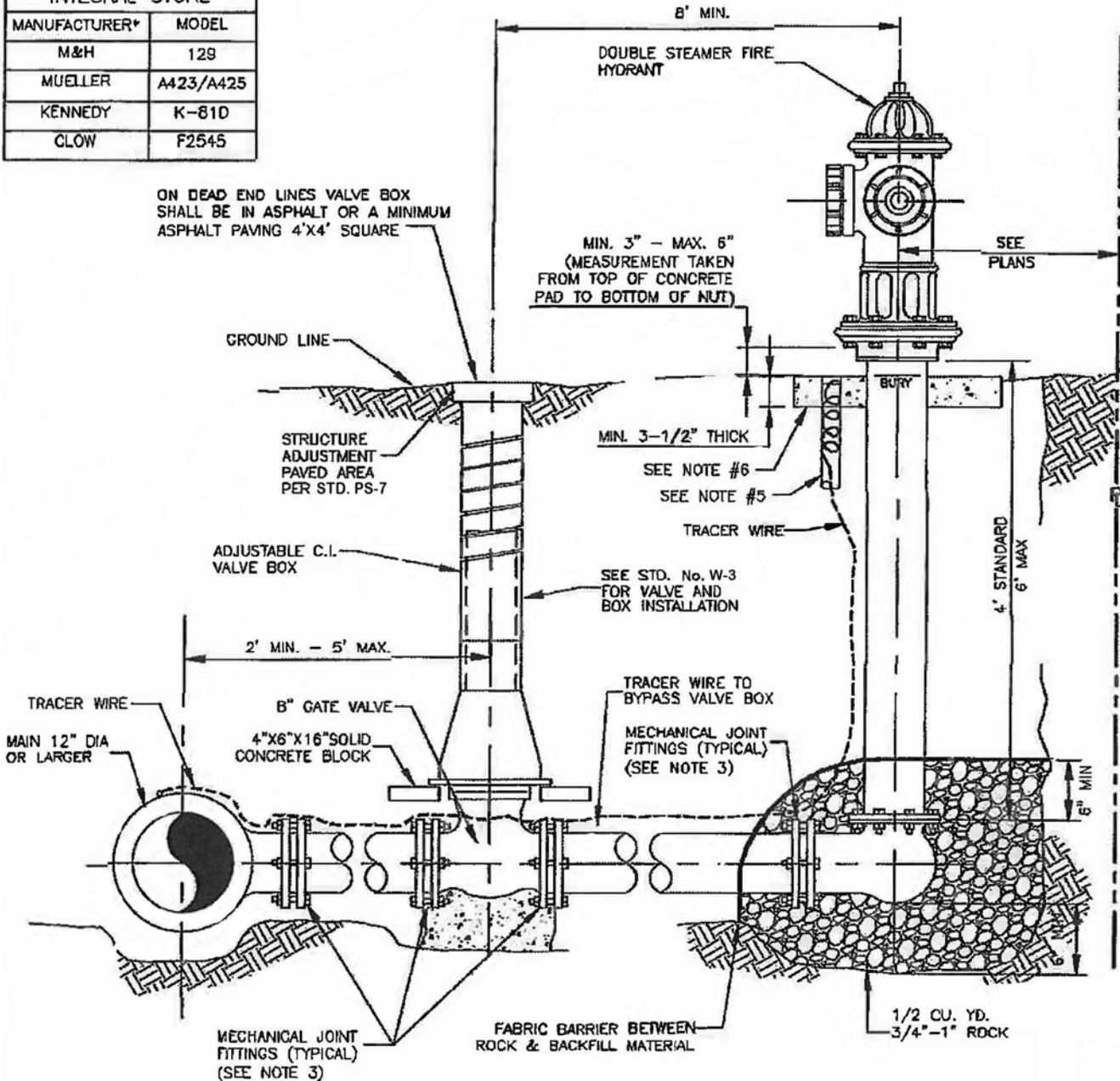


FIRE HYDRANT W/O INTEGRAL STORZ	
MANUFACTURER*	MODEL
M&H	129
MUELLER	A423/A425
KENNEDY	K-810
CLOW	F2545



NOTES:

1. ORIENTATION OF NOZZLES AS SPECIFIED.
 2. MEG-A-LUG WEDGE ACTION JOINT RESTRAINT, SERIES - 1100 FOR CAST IRON OR DUCTILE, SERIES - 2000 PV FOR CAST IRON SIZE PVC.
 3. HYDRANT BURY 8" PIPE.
 4. TRACER WIRE TO BE IN A 2" PVC PIPE WITH INVERTED THREADED CAP (TEFLON TAPED), FLUSH WITH TOP OF CONCRETE PAD. (LEAVE 12" TO 18" SLACK INSIDE TUBING)
 5. THE TOP SIDE OF THE 48" CONCRETE PAD SHALL BE LOCATED FLUSH AND LEVEL WITH THE BACKSIDE SIDEWALK ELEVATION.
 - IF NO SIDEWALK AREA; FLUSH WITH THE BACK OF SIDEWALK (FUTURE) ELEVATION.
 - IF NO CURB & GUTTER; FLUSH WITH THE FINAL ROAD ELEVATION.
 - IF NO ROAD FRONTAGE; FLUSH WITH THE FINAL GROUND ELEVATION.
- ANY GROUND SLOPE REMEDIATION SURROUNDING THE "CLEAR-AREA" SHALL BE COMPLETED BY THE CONTRACTOR, PRE-AUTHORIZED BY THE CITY.



DOUBLE STEAMER FIRE HYDRANT

CONSTRUCTION STANDARDS

STANDARD NO. W-6

SHEET 2 OF 7

APP'D R. Salcido
DATE Oct. 11, 2023