

*Prepared for:*

City of Aztec  
201 West Chaco  
Aztec, New Mexico 87410  
*and*

San Juan County  
305 South Oliver Drive  
Aztec, New Mexico 87410

NPDES Phase II Small MS4  
Annual Report 2021-2022

*for*

San Juan County  
and City of Aztec  
San Juan County, New Mexico  
April 15, 2023

*Prepared by:*

San Juan County Public Works Division

*This page intentionally left blank.*

# Contents

<b>1.0 GENERAL INFORMATION .....</b>	<b>1</b>
1.1 EXECUTIVE SUMMARY .....	2
1.2 STORMWATER MANAGEMENT PLAN: SIX MINIMUM CONTROL MEASURES.....	2
1.3 PERMIT COVERAGE AREA .....	2
1.4 REPORTING REQUIREMENTS .....	2
1.5 CERTIFICATIONS.....	3
<b>2.0 SELF-ASSESSMENT .....</b>	<b>5</b>
<b>3.0 SUMMARY OF MINIMUM CONTROL MEASURES.....</b>	<b>6</b>
3.1 PUBLIC EDUCATION AND OUTREACH .....	6
3.1.1 <i>Target Audiences</i> .....	6
3.1.2 <i>Education Materials and Strategies</i> .....	6
3.1.3 <i>Pesticide Management/Community Awareness</i> .....	6
Table 1. Public Education and Outreach .....	8
3.2 PUBLIC INVOLVEMENT AND PARTICIPATION .....	11
3.2.1 <i>Volunteer Educators/Speakers</i> .....	11
3.2.2 <i>Public Meetings/Community Outreach</i> .....	11
3.2.3 <i>Recycling</i> .....	11
Table 2. Public Involvement and Participation .....	12
3.3 ILLICIT DISCHARGE AND DETECTION ELIMINATION .....	14
3.3.1 <i>Visual Inspection/Screening</i> .....	14
3.3.2 <i>Geographic Information System (GIS) Mapping</i> .....	14
3.3.3 <i>Correct Illicit Discharges</i> .....	14
3.3.4 <i>Documentation</i> .....	15
Table 3. Illicit Discharge Detection and Elimination.....	16
3.4 CONSTRUCTION SITE STORMWATER RUNOFF CONTROL.....	17
3.4.1 <i>Site Plan Review</i> .....	17
3.4.2 <i>Erosion Awareness</i> .....	17
3.4.3 <i>Non-Structural BMPs</i> .....	17
3.4.4 <i>Structural BMPs</i> .....	17
Table 4. Construction Site Stormwater Runoff Control .....	18
3.5 POST-CONSTRUCTION STORMWATER MANAGEMENT IN NEW DEVELOPMENT AND REDEVELOPMENT.....	19
3.5.1 <i>Post-Construction Runoff Control</i> .....	19
Table 5. Post-Construction Stormwater Management .....	19
in New Development and Redevelopment.....	19
3.6 POLLUTION PREVENTION AND GOOD HOUSEKEEPING IN MUNICIPAL OPERATIONS .....	20
3.6.1 <i>Municipal Maintenance</i> .....	20
3.6.2 <i>Pesticide General Permit for San Juan County</i> .....	20
3.6.3 <i>City- and County-Wide Clean-Up Days</i> .....	20
Table 6. Pollution Prevention and Good Housekeeping in Municipal Operations .....	21
<b>4.0 STORMWATER INSPECTIONS .....</b>	<b>22</b>
4.1 STORMWATER RUNOFF OBSERVATIONS, SAMPLING AND LABORATORY ANALYSES .....	22
<b>5.0 SUMMARY .....</b>	<b>22</b>
5.1 PUBLIC EDUCATION AND OUTREACH .....	22
5.2 TRAINING, CONFERENCES, AND CONTINUED COLLABORATION WITH OTHER MS4 ENTITIES .....	23

5.3	PUBLIC INVOLVEMENT AND PARTICIPATION .....	23
5.4	CONSTRUCTION AND POST-CONSTRUCTION .....	23
5.5	STORMWATER INSPECTIONS AND MONITORING.....	24
6.0	REFERENCES.....	24

# Figures

Figure 1. NPDES MS4 Area – Farmington Urbanized Area

Figure 2. NPDES MS4 Area – Aztec Urban Cluster

# Appendices

- Appendix A. Public Education and Outreach Information
- Appendix B. Public Involvement and Participation Information
- Appendix C. Outfall Inspection Forms

# NPDES Phase II Small MS4 Annual Report 2021-2022

San Juan County and City of Aztec  
San Juan County, New Mexico

---

## 1.0 General Information

San Juan County has completed this National Pollutant Discharge Elimination System (NPDES) Phase II Municipal Separate Storm Sewer System (MS4) General Permit Annual Report on behalf of the San Juan County and City of Aztec, located in northwest New Mexico. This report is submitted as a requirement of [NPDES MS4 Permit NMR040000](#), effective July 1, 2007 and administratively continued since July 1, 2012.

---

<b>Municipality/Organization:</b>	San Juan County and City of Aztec
-----------------------------------	-----------------------------------

<b>EPA NPDES Permit Number:</b>	NMR040000
---------------------------------	-----------

<b>Reporting Period:</b>	July 1, 2021 – June 30, 2022
--------------------------	------------------------------

## *1.1 Executive Summary*

The *Stormwater Management Plan: San Juan County and the City of Aztec* (COA and SJC, 2008) outlines the City of Aztec (COA) and San Juan County (SJC) program to comply with the U.S. Environmental Protection Agency (USEPA) [Phase II Stormwater Final Rule](#) (64 CFR 6872, 8 Dec 1999) to improve stormwater quality in accordance with the Clean Water Act of 1972. This program also serves to develop, implement, and enforce a stormwater management program designed to reduce the discharge of pollutants to the maximum feasible extent. The USEPA has identified six minimum control measures which must be specifically addressed within this plan. COA and SJC must show measurable goals and improvements in these six control areas, which are listed below and outlined in the report. Implementing these six control measures involves several departments within City of Aztec and San Juan County government. There are numerous outfalls located in the City and County that discharge into the Animas and San Juan Rivers, which are jurisdictional Waters of the United States. By following these six control measures, COA and SJC benefit from reductions in pollutants being discharged to these Waters. A record of these results and improvements will be the responsibility of each entity and/or department.

## *1.2 Stormwater Management Plan: Six Minimum Control Measures*

1. Public Education and Outreach
2. Public Involvement and Participation
3. Illicit Discharge Detection and Elimination (IDDE)
4. Construction Site Stormwater Runoff Control
5. Post-Construction Stormwater Management in New Development and Redevelopment
6. Pollution Prevention and Good House Keeping for Municipal Operators

## *1.3 Permit Coverage Area*

The Stormwater Management Plan (SWMP) encompasses the urbanized areas within COA and SJC and covers approximately 44 square miles. The COA has a population of approximately 6,201, and SJC has a population of approximately 120,993 (U.S. Census Bureau, 2022).

## *1.4 Reporting Requirements*

The MS4 Annual Report includes the status of compliance with the permit conditions, an assessment of the appropriateness of the Best Management Practices (BMPs) selected, and progress towards achieving the measurable goals for each of the six minimum control measures. The report also summarizes activities undertaken by COA and SJC during the reporting cycle, any changes to the plan or its measurable goals, and all relevant data

obtained during the reporting period. Additionally, any changes made to BMPs, or the measurable goals will be addressed.

### 1.5 Certifications

Contact Person: Nick Porell, San Juan County Public Works Director

---

Telephone #: (505) 334-4520 Email: nporell@sjcounty.net

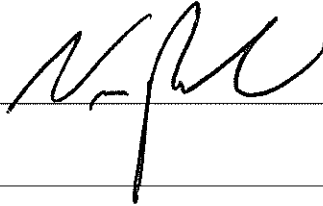
---

Mailing Address: 305 South Oliver Drive, Aztec, New Mexico 87410

---

*I certify under penalty of law that this document and all attachments were prepared under my direction or supervision in accordance with a system designed to assure that qualified personnel properly gather and evaluate the information submitted. Based on my inquiry of the person or persons who manage the system, or those persons directly responsible for gathering the information, the information submitted is, to the best of my knowledge and belief, true, accurate, and complete. I am aware that there are significant penalties for submitting false information, including the possibility of fine and imprisonment for knowing violations.*

Signature (San Juan County):



Printed Name: Nick Porell

---

Title: Director of Public Works

---

Date:

10/2/23

---

Contact Person: Jeff Blackburn, Aztec City Manager

---

Telephone #: (505) 334-7606

Email: jblackburn@aztecnm.gov

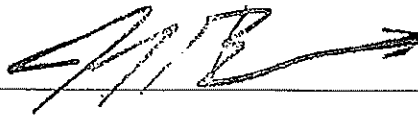
---

Mailing Address: 201 West Chaco, Aztec, New Mexico 87410

---

*I certify under penalty of law that this document and all attachments were prepared under my direction or supervision in accordance with a system designed to assure that qualified personnel properly gather and evaluate the information submitted. Based on my inquiry of the person or persons who manage the system, or those persons directly responsible for gathering the information, the information submitted is, to the best of my knowledge and belief, true, accurate, and complete. I am aware that there are significant penalties for submitting false information, including the possibility of fine and imprisonment for knowing violations.*

Signature (City of Aztec):



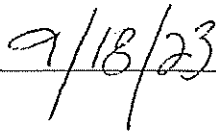
Printed Name: Jeff Blackburn

---

Title: City Manager

---

Date:



---

## 2.0 Self-Assessment

COA and SJC have a SWMP in place which is used as a guide to improve stormwater quality and implement compliance with the EPA Phase II Final Rule and the Clean Water Act of 1972.

The COA and SJC SWMP emphasizes Public Education and Outreach, and Public Involvement and Participation as control measures in stormwater management. Public education and involvement are effective tools that reach across many socioeconomic boundaries and can influence public behavior indefinitely. The City and County stress these control measures to increase awareness and prevention, thereby reducing the number of stormwater pollution incidents which may occur. Throughout the year, COA and SJC sponsored clean-up efforts and recycling programs, which receive high participation rates by the public and interest groups.

COA and SJC have a Stormwater Hotline (505-334-4560) to report spills, illicit discharges, and general comments or complaints from the public regarding stormwater runoff. The Stormwater Hotline has been a useful resource, although the City and County would like to see more participation and reporting by the public.

Both COA and SJC require the approval of submitted construction plans and land use plans that comply with USEPA regulations for all construction projects at least one acre in size. No Notices of Intent (NOI) for Aztec construction stormwater permits were filed with COA as owner/operator for construction sites during this permit period.. In contrast, one NOI was active during this time with SJC named as the owner/operator for construction sites: Lee Acres San Juan River Bridge Replacement Project.

COA and SJC provide a good example regarding stormwater management with regular inspections and maintenance of their vehicles, street sweeping, working with the Adult Detention Center in efforts to help clean up roadways and outfalls, and continuation of a sound Pesticide Management Plan, among other measures.

The City and County also provide a number of resources available for the public, such as access to the [GeoHub](#) interactive mapping website, the Stormwater Hotline at 505-334-4560, listings of solid waste dumping locations, access to at-home recycling pickup services, and hosting hazardous and electronic waste collection days.

The "[Clean Up San Juan](#)" mobile app was launched in 2018 to report illegal dumping. Between July 1, 2021, and June 30, 2022, SJC had 636 reports through the app and 55 reports through the county sheriff's office. The National Association of Counties awarded SJC a 2020 Achievement Award for Information Technology for the "Clean Up San Juan: mobile app. COA received no direct reports of illegal dumping during the reporting period.

---

## 3.0 Summary of Minimum Control Measures

### 3.1 Public Education and Outreach

#### 3.1.1 Target Audiences

COA and SJC use a variety of methods to reach a diverse audience, such as utilizing mass media campaigns and a mix of resources to promote pollution awareness relevant to the SWMP. The industrial outreach program builds upon existing programs such as mailing out educational brochures, social media posts, and recycling to target businesses and industries which significantly impact storm drains and/or conveyances.

#### 3.1.2 Education Materials and Strategies

The public education effort informs residents about COA and SJC recycling programs, including proper disposal of used motor oil, chemicals, solvents, and other hazardous household products. Citizen watch groups are encouraged to identify areas regarding stormwater pollution. A Stormwater Hotline has been established to aid the community in reporting illicit discharge and potential spills and a Clean Up San Juan mobile app exists to aid in reporting illegal dumping. Relevant posts are made on social media. The COA made a poster to encourage proper disposal of masks and other material in response to the COVID-19 pandemic (see Appendix A).

COA maintains stormwater webpages at:

- <http://www.aztecnm.gov/stormwater/bmps.html>,
- <http://www.aztecnm.gov/stormwater/tips.html>, and
- [http://www.aztecnm.gov/stormwater/illicit\\_discharges.html](http://www.aztecnm.gov/stormwater/illicit_discharges.html).

In addition to having a County Floodplain Manager who is available to guide the public through various floodplain questions and issues, SJC maintains the following webpage:

- <https://www.sjcounty.net/government/community-development/floodplain-management>

These strategies involve using various public service announcements, including multi-lingual posters, brochures, and flyers to help promote awareness in stormwater pollution management.

#### 3.1.3 Pesticide Management/Community Awareness

An integrated Pest Management brochure for City and County residents to find alternatives for traditional pesticides has been offered. San Juan County Vector Control and New Mexico State University's (NMSU's) Extension services have been consulted to address urban pest management, which is expected to be developed over the next year. A community

education program teaches residents xeriscaping, non-chemical pest control, and removal of pests by non-chemical means. Lawn (and household) pesticide application brochures are available to City and County employees and residents through the existing Pesticide Awareness Program.

Table 1. Public Education and Outreach

<b>BMP ID #</b>	<b>BMP Description</b>	<b>Responsible Dept./ Person Name</b>	<b>Measurable Goals</b>	<b>Progress on Goal(s) – Permit Year 2021-2022</b>	<b>Planned Activities – Permit Year 2022-2023</b>
1.1	Public notice of upcoming meetings and event schedules	County Public Works	Submit notices to area newspapers and post on county website (sjcounty.net).	Public has been notified via newspaper articles, fliers, webpages, etc. of upcoming meetings and events.	Continue notifying public through various means of upcoming meetings and events.
1.2	Stencil drain program and mark outfalls	Public Works	Design and post storm drain markers.	Storm drain marker conditions were monitored.	Storm drain markers are replaced as needed each spring as weather improves.
1.3	Employee Guide on Stormwater	Public Works	Train all new City and County employees on preventing stormwater pollution.	New hires were trained in 2021-2022 permit period for SJC and COA (Employee Training Guide).	Continue training new employees. Update the Guide as needed and improve tracking.
1.4	Stormwater management training of COA and SJC personnel	Public Works	Attend training programs and classes attend local interest group meetings.	COVID 19 pandemic restrictions limited additional stormwater training opportunities.	Send COA/SJC representative to appropriate conferences, training classes, and group meetings. Attend upcoming USEPA MS4 workshops.

<b>BMP ID #</b>	<b>BMP Description</b>	<b>Responsible Dept./ Person Name</b>	<b>Measurable Goals</b>	<b>Progress on Goal(s) – Permit Year 2021-2022</b>	<b>Planned Activities – Permit Year 2022-2023</b>
1.5	Education through displays at public events such as SJC Fair	Public Works	Set up booth with educational brochures and pamphlets. Submit social media posts.	COA's National Night Out, where significant stormwater public education was conducted, was canceled to the COVID 19 pandemic. Handed out brochures and pamphlets at COA City Hall, Animal Shelter, and Minium Park.	Submit social media posts regarding stormwater education. Resume National Night Out if conditions allow.
1.6	Floodplain Management Education	Public Works	Hand out Floodplain Management Brochure to City and County residents. Education of personnel.	SJC Office of Emergency Mgmt. updated flood education brochure. Brochures made available at county offices and sent annually with utility bills. See Appendix A. SJC Floodplain map available at <a href="https://data-sjcounty.opendata.arcgis.com">https://data-sjcounty.opendata.arcgis.com</a>	Continue educating public on flood management and safety.
1.7	Hazardous Products Education	Public Works	Hand out Safer Alternatives to Hazardous Products Brochure at County Fair.	Extras saved and handed out at other educational outreach programs.	Continue educating public on hazard products and disposal methods.
1.8	Stormwater Newspaper Articles, Social Media and/or Web Page Announcements	Public Works	Announcements notifying public of COA and SJC Stormwater Program, Stormwater Hotline, Hazardous Waste Disposal locations and dates, etc.	Flyers distributed by mail and social media. Posts made on SJC Next Door and Facebook pages. COA stormwater websites ( <a href="http://www.aztecnm.gov/stormwater/tips.html">http://www.aztecnm.gov/stormwater/tips.html</a> , <a href="http://www.aztecnm.gov/stormwater/r/illicit_discharges.html">http://www.aztecnm.gov/stormwater/r/illicit_discharges.html</a> ) maintained.	Submit announcements as needed. Update stormwater pages for SJC and for COA.
1.9	Stormwater Flow Chart	Public Works	Education through the SWMP Flow Chart.	Evaluate if a SWMP Flow Chart would be useful and what it all would entail	Design SWMP Flow Chart if deemed useful for new

<b>BMP ID #</b>	<b>BMP Description</b>	<b>Responsible Dept./ Person Name</b>	<b>Measurable Goals</b>	<b>Progress on Goal(s) – Permit Year 2021-2022</b>	<b>Planned Activities – Permit Year 2022-2023</b>
1.10	Pesticide Management Plan	Public Works	Inform/educate residents of pesticide management and offer alternative methods to controlling pests/weeds.	(hold while pursuing MS4 collaborative group for next MS4 permit). Brochures and pamphlets are made available to public through the SJC Pesticide Awareness Program. Notice is provided of mosquito spraying times and locations.	employees and COA/SJC residents. Continue educating the public through the Pesticide Awareness Program.

### **3.2 Public Involvement and Participation**

The COA and SJC public participation control measure has a large public component and involves all socio-economic groups. Support by residents is crucial to the success of the SWMP. Broader public support in the development and decision-making process minimizes potential legal challenges and maximizes acceptance and cooperation.

#### **3.2.1 Volunteer Educators/Speakers**

Volunteer educators and speakers are encouraged to provide their expertise in the areas of stormwater maintenance and pollution prevention. COA and SJC also have resources available at San Juan College in the fields of water and wildlife conservation, engineering, and hydrology to help support the stormwater infrastructure. An annual local watershed conference was canceled in 2021 due to the COVID 19 pandemic. However, an [Animas and San Juan Watersheds Conference](#) is planned for June 8-9, 2022.

#### **3.2.2 Public Meetings/Community Outreach**

Public meetings present an opportunity to discuss various topics and provide input concerning appropriate stormwater management policies and BMPs. Community clean-up events and activities are City and County sponsored. A telephone hotline has been set up to aid enforcement authorities in the identification of polluters. The program seeks to contact groups such as the City of Aztec Chamber of Commerce, Rotary Clubs, River Walk groups, rafting groups, Glade Recreation Area users, and the Girl Scouts. Responses are made to those who respond to SJC social media posts.

#### **3.2.3 Recycling**

Recycling programs have been instituted to recycle yard waste, newspapers, cardboard, plastic, oils, and antifreeze. A recycling program that targets these materials encourages proper disposal and should further reduce pollution of the river and waterways. COA opened a single stream Recycle Center in 2017, open six days per week and now offers recycling home pick up services to community members who sign up for this service. San Juan County offers single stream recycling at all 12 of its solid waste convenience stations. Allowable recyclable materials, station locations, and hours are presented on the County's webpage (<https://www.sjcounty.net/government/public-works/solid-waste-dump-stations>).

A swapping center could be used for residents to drop off unused items, such as paint or scrap metal parts, which other residents may be able to use. The feasibility of a swapping center may be re-evaluated in the near future. These efforts will help reduce the amount of usable materials that end up in landfills, as well as provide an affordable alternative disposal method for residents.

Table 2. Public Involvement and Participation

<b>BMP ID #</b>	<b>BMP Description</b>	<b>Responsible Dept./ Person Name</b>	<b>Measurable Goals</b>	<b>Progress on Goal(s) – Permit Year 2021-2022</b>	<b>Planned Activities – Permit Year 2022-2023</b>
2.1	Hazardous Waste Collection	Public Works	Set dates and locations for hazardous waste collection.	COA conducts free At Your Door Special Collection and SJC conducts Save the Date! event for hazardous waste.	Continue At Your Door Special Collection program for COA residents and Save the Date! program for SJC residents.
2.2	Stormwater Hotline	Public Works	Establish Stormwater Hotline to report spills and illicit discharges.	Stormwater Hotline at (505) 334-4560 successfully operating.	Keep Stormwater Hotline available to public. Increase advertisement of hotline and encourage reporting.
2.3	Reporting Illegal Dumping	Public Works	Establish hotline to report illegal dumping activities.	Hotline for County or City Municipalities at (505) 334-6622 and Clean Up San Juan app are successfully operating.	Increase public awareness of City and County Ordinances regarding illegal dumping. Encourage reporting illegal dumping activities.
2.4	Community Clean-Up Days and Free Dump Day	Public Works	Community clean-up days for curbside pickup, freon removal, tree branch/limb recycling, and dump convenience center. Services are free to county residents.	COA Free Dump Days/SJC Dumpster Days held Oct. 2020 and April 2021. Regular COA open dumpster is available to public at COA Recycle Center.	Schedule clean-up days for 2022.

<b>BMP ID #</b>	<b>BMP Description</b>	<b>Responsible Dept./ Person Name</b>	<b>Measurable Goals</b>	<b>Progress on Goal(s) – Permit Year 2021-2022</b>	<b>Planned Activities – Permit Year 2022-2023</b>
2.5	County Adult Detention Facility and other roadside and yard waste cleanup programs	Public Works	Inmates of the Adult Detention Facility assist in roadside and yard cleanup of trash and debris.	This event has been temporarily suspended due to COVID.	Continue working with the County Adult Detention Facility and encouraging volunteer hours from the inmates. Resume inmate help when COVID-19 situation allows.
2.6	National Public Lands Day	Public Works and U.S. Department of the Interior	Clean up illegally dumped trash in the BLM Glade Run Recreation Area.	Clean up held Sept. 2021	Continue to host National Public Lands Day and encourage additional volunteers.
2.7	Animal Waste Collection	COA Parks Department	Provide dog waste bag stations.	Dog waste bag stations are located in all Aztec city parks.	Stock stations as needed.

### **3.3 *Illicit Discharge and Detection Elimination***

#### **3.3.1 Visual Inspection/Screening**

The illicit discharge detection measure involves City and County staff as well as local citizens. COA and SJC locate illicit discharge problem areas through visual inspections, public complaints, visual screening, and dry weather screening methods. The program works to detect and eliminate illicit discharges. COA and SJC catalog data pertinent to the NPDES program. The data is available to interested parties. Visual inspection of storm drains is integral in identifying those areas of the City and County that have frequent occurrences of illicit discharges.

#### **3.3.2 Geographic Information System (GIS) Mapping**

GIS is utilized by COA and SJC to map the location of all storm sewer drain lines, ponds, and other waters that receive stormwater discharges. This information is made available through the City and County network and ArcGIS software. All outfalls which discharge into a recognized water body are accurately mapped using Global Positioning Systems (GPS) survey equipment. Thus, a map of the various aspects of the stormwater system (catch basins, pipes, culverts, and other stormwater structures) can also be depicted. This enables the City and County to locate sources of illicit discharges and the affected downstream waterways. SJC also hosts a San Juan County Map Portal (<https://webmaps.sjcounty.net/portal/home/>), which presents interactive web maps displaying educational tools such as Clean Up San Juan statistics, land use plans, waterways, floodplains, and SJC road statuses.

As SJC and COA work on collaborative plans for integrated and cooperative sampling as the next small MS4 Permit is finalized, there are tentative plans to include analytical sampling for caffeine and microbial source tracking in select samples to help identify areas where there may be illicit discharge issues and help differentiate them between human and animal sources. Additionally, sampling results may also be incorporated into the GIS database maintained and add upon by the [San Juan Watershed Group](#).

#### **3.3.3 Correct Illicit Discharges**

If illicit discharges are discovered, reported, or suspected, the City and County address each discharge on a case-by-case basis, where an educational method to approaching illicit dischargers is first used to help prevent future non-compliance by that person(s). The City and County will submit a written letter, call, or personally talk to the individuals, with an emphasis on educating them about their actions' impacts to waterways, wildlife, and property value. In the event of re-occurring or illicit discharges with notable consequences, proper authorities are notified, and legal action is taken in accordance with applicable ordinances.

#### **3.3.4 Documentation**

Because COA and SJC are currently working with other collaborative members in the urbanized area in shifting the sampling focus from an outfall-based program to a watershed-based program, no sampling data was collected during the permit period with regards to potential illicit discharges.

Table 3. Illicit Discharge Detection and Elimination

<b>BMP ID #</b>	<b>BMP Description</b>	<b>Responsible Dept./Person Name</b>	<b>Measurable Goals</b>	<b>Progress on Goal(s) – Permit Year 2021-2022</b>	<b>Planned Activities – Permit Year 2022-2023</b>
3.1	Stormwater Hotline	Public Works	Increase participation of Stormwater Hotline.	Stormwater Hotline advertised in local papers, pamphlets, fairs, and educational outreach programs.	Continue advertising hotline. Encourage reporting of illicit dumping and spills.
3.2	Visual inspections and monitoring	Public Works	Locate and report illicit discharges, illegal dumping, and spills.	Clean Up San Juan mobile app reported 636 illegal dumping incidents in 2020-2021. SJC Sheriff's Office had 55 reported incidents. COA had no reported incidents.	Continue tracking and educating offenders. Continue promoting the use of the Stormwater Hotline for reporting illegal dumping and discharges. Monitor for illicit discharges during pond cleanup.
3.3	Storm drains, outfalls, and problematic areas monitoring	Public Works	Visual inspection of storm drains and potential problematic areas.	COA visually inspects and monitors on a yearly basis. SJC visually inspects and monitors on a quarterly basis.	COA will inspect and monitor annually or as needed. SJC will inspect and monitor every quarter.
3.4	City ordinance on discharges and illegal dumping	Public Works	Update County or City Ordinances on prohibition of illicit discharges.	No ordinances currently under consideration.	No ordinances currently under consideration.

### **3.4 Construction Site Stormwater Runoff Control**

#### **3.4.1 Site Plan Review**

COA and SJC recognize that construction sites can deposit a significant amount of sediment in a short period of time. The Phase II Rule, according to 40 CFR 122.34(b)(4) (USGPO 2021) and the NPDES Construction General Permit (CGP) requires the City and County to develop and enforce a stormwater management program to address stormwater runoff from construction sites one acre or greater in area. COA currently requires the approval of submitted construction plans and a land use plan that complies with USEPA regulations. In 2010, the County adopted Ordinance 9 – Construction Code Ordinance, which adopts the codes adopted by Construction Industries Division (Title 14 NMAC); however, the County current does not have a regulatory mechanism to conduct site plan review prior to construction.

#### **3.4.2 Erosion Awareness**

COA is adopting smart growth initiatives, such as Low Impact Development (LID) designs, xeriscaping, and rain gardens, to promote open space and native landscaping to help reduce erosion.

#### **3.4.3 Non-Structural BMPs**

Non-structural BMPs for stormwater runoff from construction sites implemented by COA and SJC include: education and awareness to construction personnel, minimizing disturbance to native soil and vegetation, establishing buffers along streams and waterways, minimizing disturbances of high slope areas, and encouraging sheet flow to vegetated areas. Stream buffer guidance will be encouraged by the Public Works Department staff such that riparian stream areas are restored with native vegetation. The zone will be 100 to 150 feet wide on both sides of the bank. The buffer includes the 100-year floodplain delineation and is governed by the Flood Plain Manager for COA and SJC. To reduce severe flood-related erosion losses, no permanent structures shall be placed in the setback area, a distance equal to 60 times the average annual long-term recession rate at a site. COA and SJC will determine whether proposed site alterations and improvements will be reasonably safe from flood-related erosion and will not cause flood-related erosion hazards.

#### **3.4.4 Structural BMPs**

Structural BMPs encouraged by COA and SJC include: check dams, geotextile silt fences, berms, and sediment basins. Native seeds are often incorporated into berms to help stabilize the structure and reduce runoff. This technology has the benefit of being retrofitted in the developed portions of the City and County.

Table 4. Construction Site Stormwater Runoff Control

<b>BMP ID #</b>	<b>BMP Description</b>	<b>Responsible Dept./Person Name</b>	<b>Measurable Goals</b>	<b>Progress on Goal(s) – Permit Year 2021-2022</b>	<b>Planned Activities – Permit Year 2022-2023</b>
4.1	Documentation of construction activities one acre or greater in size	Public Works	Record construction activities which result in construction site runoff. Train City and County staff (inspectors and plan reviewers) and construction operators.	Tracked all construction activity related to stormwater runoff. Documented sites with inadequate BMPs. Educating construction workers and responsible parties on stormwater runoff management. COA filed no NOI for construction projects, and SJC filed for an NOI for the Lee Acres San Juan River Bridge Replacement and Glade Trails Replacement projects.	Continue to document construction site compliance as needed and continue educating construction personnel. Training for new requirements under the current Construction General Permit.
4.2	Stormwater Pollution Prevention Plan	Public Works	Construction sites greater than one acre must submit a SWPPP.	SWPPPs were prepared and followed, and CGP coverage was obtained prior to construction for applicable sites.	Continue enforcing SWPPP compliance. Revise ordinances as needed.
4.3	Education and Implementation of Structural and Non-Structural BMPs	Public Works, Engineering	Educate and encourage construction personnel and contractors to implement BMPs aimed at reducing stormwater runoff and erosion.	Observed BMPs and stormwater management practices for construction sites.	Continue with education and encouragement of BMP installation and practices. Partner with City of Farmington and SJ College for any new training.

### 3.5 *Post-Construction Stormwater Management in New Development and Redevelopment*

#### 3.5.1 **Post-Construction Runoff Control**

COA and SJC address post-construction stormwater runoff with structural and non-structural BMPs. The controls seek to reduce the amount of impervious cover by increasing natural land and vegetation, and to utilize pervious areas for more effective stormwater management. The City and County encourage regional ponds and parks, which provide additional pervious areas and native flora and fauna. The net increase of scenic features will positively impact neighborhood aesthetics and increase residential property values.

Table 5. Post-Construction Stormwater Management  
in New Development and Redevelopment

<b>BMP ID #</b>	<b>BMP Description</b>	<b>Responsible Dept./ Person Name</b>	<b>Measurable Goals</b>	<b>Progress on Goal(s) – Permit Year 2021-2022</b>	<b>Planned Activities – Permit Year 2022-2023</b>
5.1	Education and Awareness	Public Works	Visit post-construction sites and ensure compliance of existing ordinances.	Visited recent post-construction sites. Inspected to ensure compliance with ordinances.	Continue to visit post-construction sites on an as-needed basis or when compliance issues arise.
5.2	Education and Implementation of Structural and Non-Structural BMPs	Public Works, Engineering	Educate and encourage implementation of BMPs aimed at reducing stormwater runoff and erosion.	Continued to implement BMPs into plans and designs.	Continue with education and encouragement of BMP installation and practices. Offer more CGP training.
5.3	Post-Construction Training	Public Works, Engineering	Attend trainings and seminars on post-construction stormwater.	Individual continuing education.	Continue attending educational classes and workshops.

### **3.6 Pollution Prevention and Good Housekeeping in Municipal Operations**

#### **3.6.1 Municipal Maintenance**

The COA and SJC Pollution Prevention and Good Housekeeping in Municipal Operations Program goals are to reduce pollutant runoff from City and County operations. A vehicle maintenance program requires that all City and County owned vehicles be regularly inspected to eliminate the amount of oil, grease, and fluid leaks. Street sweeping is performed on all city streets at a frequency based on the most traveled streets and busiest intersections. All street cleaning is performed using vacuum-equipped sweepers. Outfalls are regularly inspected and analyzed according to a standardized checklist. Trouble outfalls are inspected and maintained after every storm event.

#### **3.6.2 Pesticide General Permit for San Juan County**

San Juan County was covered under the Pesticide General Permit during the reporting period and re-applied for coverage in November 2016. Coverage is valid through December 2026. All COA Parks Department personnel are certified herbicide and pesticide applicators. All equipment used for application is cleaned in a wash bay and all products are stored in a controlled access area.

#### **3.6.3 City- and County-Wide Clean-Up Days**

City- (Free Dump Days) and county-wide (Dumpster Days) clean-up days are held twice a year (April and October) throughout the area for community residents to help clean roadways, side streets, yards, parking lots, ditches, and parks. There was a Choke Cherry Cleanup Day in August and April and a National Public Lands Day in September. These events cleaned up the Choke Cherry and BLM Glade Run Recreation Areas. SJC, in conjunction with the NMDOT, picked up trash along US Highway 64 and NM 516 Right-of-Way on April 5-7, 2022

Table 6. Pollution Prevention and Good Housekeeping in Municipal Operations

<b>BMP ID #</b>	<b>BMP Description</b>	<b>Responsible Dept./ Person Name</b>	<b>Measurable Goals</b>	<b>Progress on Goal(s) – Permit Year 2021-2022</b>	<b>Planned Activities – Permit Year 2022-2023</b>
6.1	Municipal Maintenance	Public Works	Inspect and maintain City and County vehicles. Sweep streets on a regular basis; sweeping more often on the most traveled and busiest streets. Inspect and maintain outfalls.	Government-owned vehicles are regularly inspected and maintained. About 46 miles of paved roads are swept in COA, and 13.7 miles of dirt roads are treated with MgCl <sub>2</sub> for erosion treatment. Sweeper dirt is disposed of at Bondad landfill. Approximately 225 miles of paved roads are swept in SJC. Storm drains and outfalls are regularly inspected and maintained.	Continue inspections and maintenance operations. Continue street sweeping on a regular basis, increase frequency as needed.
6.2	Municipal – Pesticide Permit	SJC Public Works	Follow Pesticide Management Plan; complete required reporting.	Submitted required reports.	Submit required Annual Reports.
6.3	Multi-Sector Stormwater Permit (MSGP)	Public Works	Permit sites under MSGP; implement SWPPPs.	COA WWTP and Water Treatment Plants coverage under 2021 permit.	Submit required Annual Reports.
6.4	City- and County-Wide Cleanup Days	Public Works	Hold city- and county-wide public cleanup days.	Spring and Fall clean-up “dumpster” days held annually and hosted on October 16, 2021 and April 9, 2022. See flyers in Appendix A.	Continue to schedule clean up days on a semi-annual basis.

---

## 4.0 Stormwater Inspections

During development of the SWMP, there were initially 12 identified outfall locations within COA and the urbanized areas of San Juan County. Both Aztec and San Juan County have conducted their own periodic inspections of outfalls of concern during this reporting period.

### 4.1 *Stormwater Runoff Observations, Sampling and Laboratory Analyses*

During development of the MOA with COF and NMDOT, a review of outfall locations was made, and several possible changes to the inspection and sampling strategy have been discussed, as the emphasis has changed from an outfall emphasis to a watershed-based focus. Preliminarily, improved monitoring locations could include:

1. From Animas River, upstream of UA boundary in Aztec;
2. From Animas River, upstream of its confluence with San Juan River;
3. From San Juan River, upstream of its confluence with Animas;
4. From La Plata River, upstream of the UA boundary in Farmington;
5. From San Juan River, just below (downstream) of confluence with Animas River;
6. From La Plata River, upstream of its confluence with San Juan River;
7. From San Juan River, just below (downstream) of confluence with La Plata River;
8. From San Juan River, just below (downstream) of the UA boundary west of Farmington/Kirtland; and
9. From San Juan River, upstream of UA boundary in Farmington.

Additionally, consideration will also be made of the irrigation systems/canals that are present within the San Juan, Animas and La Plata watersheds and that exist within the Urbanized Area. Aztec and San Juan County are working with COF and NMDOT to develop a preliminary sampling approach. The Final MS4 Permit may still have some additional modifications, and the sampling plan will be modified accordingly.

---

## 5.0 Summary

### 5.1 *Public Education and Outreach*

COA and SJC have used several outreach tools and mass media campaigns to educate the public on stormwater management. Examples of such control measures include social media posts, setting up booths at the County Fair, mailing out educational brochures and fliers, and submitting stormwater related articles to the local newspapers and websites. Storm drain markers, which have been placed throughout the City and County to inform the public which drains flow directly to nearby rivers or waterways, are checked and replaced as

needed. A Pesticide Management Plan is utilized to educate the public on proper spraying methods as well as alternative methods to controlling weeds and insects.

## *5.2 Training, Conferences, and Continued Collaboration with other MS4 Entities*

COA and SJC personnel have attended and will continue attending training sessions and meetings on stormwater. New employees to the City or County are educated by their peers and through reading the Employee Guide on Stormwater.

COA and SJC continue to work with COF, NMDOT, and the NMED Surface Water Quality Bureau (SWQB) in developing a collaborative agreement to meet permit requirements. Additionally, the San Juan Watershed Group and the San Juan Soil and Water Conservation District have also been helpful in offering assistance. During the reporting period, cooperative MS4 meetings were put on hold due to the COVID-19 pandemic.

## *5.3 Public Involvement and Participation*

The City and County sponsor recycling programs several times a year to collect chemicals and hazardous household wastes, a city- county-wide cleanup twice per year, and set up a dumpster in the Glade Recreational Area two to three times per year. Citizen watch groups and general members of the public are encouraged to report spills or illicit discharges through the Stormwater Hotline and illicit solid waste through the Clean Up San Juan app. The public may respond to social media posts.

SJC was able to collect 25.39 tons of roadside trash and debris, 42.26 tons from public lands, 8.04 tons from National Public Lands Day, and 212.06 tons through other special projects. Clean Up San Juan collected 106.41 tons at 8 sites. On Free dump days, 36.34 tons were collected in October and 113.92 tons was collected in April. All trash was taken to the landfill. The City routinely sweeps about 38 miles of paved roads and treats 13.7 miles of dirt roads with magnesium chloride dust control, while the County sweeps approximately 225 miles of paved roads. Government vehicle operated are regularly inspected and maintained to prevent fluid leaks.

## *5.4 Construction and Post-Construction*

Construction sites equal to or greater than one acre in size are required to submit a stormwater pollution prevention plan in accordance to EPA regulations and City and County ordinances. The City and County encourage and educate proper installation and maintenance of structural and non-structural BMPs for construction and post-construction sites. LID implementation, xeriscaping, and preservation of natural land and vegetation are also encouraged by COA and SJC. COA and SJC will review and incorporate BMP practices

and recommendations from the recently released [\*New Mexico Department of Transportation \(NMDOT\) National Pollutant Discharge Elimination System Manual\*](#) (2020).

### 5.5 Stormwater Inspections and Monitoring

Stormwater outfalls were inspected throughout the year to ensure they were in good operating condition and to help identify impending structural failures, maintenance needs, and water quality issues of the storm drain system. SJC and COA will continue routine inspections and sampling events to ensure BMPs are met and they are in good operating condition.

---

## 6.0 References

COA and SJC,. *Storm Water Management Plan*. Storm Water Management Plan, Aztec: City of Aztec (COA) and San Juan County (SJC), 2008.

U.S. Census Bureau,. *State and County Quickfacts*. 2022.  
<https://www.census.gov/quickfacts/fact/table/US/PST045219>.

USGPO. *U.S. Government Printing Office (USGPO) Electronic Code of Federal Regulations*. May 28, 2021. [http://www.ecfr.gov/cgi-bin/text-idx?tpl=/ecfrbrowse/Title40/40cfr122\\_main\\_02.tpl](http://www.ecfr.gov/cgi-bin/text-idx?tpl=/ecfrbrowse/Title40/40cfr122_main_02.tpl) (accessed May 28, 2021).

# **APPENDIX A**

## **PUBLIC EDUCATION AND OUTREACH**

## HISTORY OF FLOODING IN SAN JUAN COUNTY

Floods in San Juan County result from general rainstorms, snowmelt, and rain from cloudburst storms. General rain floods have been the cause of severe damage along the Animas and La Plata Rivers and have usually occurred during the months of September and October. This type of flood results from prolonged heavy rainfall over tributary areas and is characterized by high peak flows of moderate duration.

Major rain floods occurred on the La Plata River in 1904 and 1909. On the Animas and San Juan Rivers, spring snowmelt flooding occurred in 1884 and rain flooding in 1909. During the latter part of June 1927, melting snow augmented by general rain over the San Juan River basin created the highest flows and most widespread flooding on the La Plata, Animas, and San Juan Rivers since the flood of October 1911, which is counted as the historic basis for the 1% annual chance flood, also known as the 100-year flood.

More recent floods include 1995 and 2005 on the Animas River due to high spring run-off. 2008 flash floods on the La Plata Highway (NM 170) 2008 thru 2014, flash flooding occurred in the area of Blanco, and in 2008 and 2011 flash flooding occurred on Sullivan Road in Bloomfield. In 2009, a flash-flood event occurred near the Colorado border on NM 170. A 2015 storm brought flooding to Aztec with high winds and intense rain. Flooding from Peak Release flows on the San Juan River in 2016 caused an abandoned manufactured home to slide off the bank and also damaged storage buildings.

Flash-flooding events throughout San Juan County have continued to cause damage to infrastructure and private property. A major flash-flooding event in 2013 deposited several feet of sediment for residents to dig out from under and remove.



## Building a Resilient Future

### FARMINGTON ENTERPRISE



### San Juan County Floodplain Management

209 S Oliver—Aztec, NM 87410  
www.sjcounty.net  
@SanJuanCounty—Facebook  
@SanJuanCountyNM—Twitter

\*Photos courtesy Farmington Museum

## RESOURCES AND CONTACTS

### LOCAL FLOOD RESOURCES

San Juan County Floodplain Management	505-334-4550 505-334-4719
City of Aztec Planning and Zoning	505-334-7605
City of Bloomfield Planning and Zoning	505-632-6319
City of Farmington Engineer's Office	505-599-1306

### SAN JUAN COUNTY COMMUNITY DEVELOPMENT

**CODE COMPLIANCE**  
For information regarding the San Juan County Cleanup Program or the land use ordinances, please contact the Code Compliance Officer at 505-333-3130 or 505-334-4550.

#### RURAL ADDRESS/ E9-1-1 UPDATE

All residents should complete an E9-1-1 addressing update. Accurate addressing is vital to the Emergency 9-1-1 system. Verification of a physical address for emergency services is required before building permits can be issued or new electrical service obtained. All new addresses that will access a County Maintained Road or a State or US Highway must have a permit for construction of the driveway within the Right-of-Way before an E9-1-1 address may be issued. To obtain or verify your E9-1-1 address, contact us at (505)334-4314/334-4713. rural.addressing@sjcounty.net

**DIVISION OF LAND, MANUFACTURED HOMES/PARKS**  
For information on divisions of land, Manufactured Home Parks, or RV Parks in the unincorporated areas of San Juan County, please contact us at 505-334-4248 or 505-334-4550.

#### BUILDING PERMITS/ INSPECTIONS

For building permits and information on building codes in the unincorporated areas of San Juan County and the Cities of Aztec and Bloomfield, contact us at 505-334-4313 or on line at [www.sjcounty.net](http://www.sjcounty.net)

### OTHER FLOOD RESOURCES

**FEMA—National Flood Insurance Program**  
[www.fema.gov](http://www.fema.gov) (flood maps)  
[www.floodsmart.gov](http://www.floodsmart.gov)  
[www.ready.gov](http://www.ready.gov)

**Turn Around Don't Drown—NOAA**  
<https://www.weather.gov/safety/flood-turn-around-dont-drown>

**FloodVest Success**  
**USA FOUNDATION FLOOD AR VENTS**  
[www.usafloodvents.com](http://www.usafloodvents.com)  
**SMART VENT**  
[www.smartvent.com](http://www.smartvent.com)

**FACT:**  
San Juan County Floodplain Management has information available on historic flooding, among inundation studies, Natural Areas, and other unpublished documentation to assist homeowners.

### DROUGHT RESOURCES

**NMSU EXTENSION**  
**Home Gardening and Landscape**  
[http://aces.nmsu.edu/pub/edu\\_drought/homestead](http://aces.nmsu.edu/pub/edu_drought/homestead)

### DITCH SAFETY

**Ditch the Ditches**  
<https://ditchtheditches.com/>

**FACT:**  
**HOMEOWNERS INSURANCE DOES NOT COVER OUTSIDE FLOODING**

### Can Emergency Responders find your

#### RURAL ADDRESSING 505-334-4680

1. Update your Rural Addressing information
2. Make sure there is an accurate house number clearly marked on your home

### Do You Operate a Business in San Juan County outside City Limits?

#### BUSINESS REGISTRATION 505-334-4550

1. Register your business on line at [www.sjcounty.net](http://www.sjcounty.net)
2. Its FREE, easy and your business can be listed on the San Juan County Buy Local Directory Page

### Thinking about building?

#### BUILDING DEPARTMENT 505-334-4313

San Juan County Building Department serves as the permitting agent for Aztec, Bloomfield, Kirtland, and San Juan County unincorporated.

1. Construction, electrical, and plumbing/mechanical activities must be permitted
2. Call for information on what documentation your construction will need to obtain a permit
3. Carports, portable buildings, and storage sheds over 120 sq ft, must be permitted



### Questions about dividing land?

#### SUBDIVISION REVIEW 505-334-4550

1. Providing information on the process of dividing property in San Juan County Unincorporated

### San Juan County Clean Up Program

#### CODE COMPLIANCE 505-334-4550

1. San Juan County may provide assistance for eligible applicants to clean up abandoned manufactured homes, junk cars, and trash.
2. This is an income based program and proof of income documentation is required.
3. Once applicant has been approved for the program, project will be reviewed for size.
4. Property owner/applicant will be responsible for paying landfill fees prior to clean up work being scheduled.
5. Fees are based on project size.



**HOW DO I FIND OUT IF MY PROPERTY  
HAS WETLANDS OR  
PROTECTED/ENDANGERED SPECIES?**  
The United States Army Corps of Engineers can provide land owners with information on wetlands and protected or endangered species. 505-342-3493

### HOW DO I KNOW IF MY PROPERTY IS IN THE FLOODPLAIN?

To set up a site visit on drainage, wetland, or flooding issues call the San Juan County Floodplain Management Office at (505) 334-4719.

For map information go to: [www.sjcounty.net](http://www.sjcounty.net)  
Or  
Visit the FEMA Map Store:  
<https://tinyurl.com/3h9jsps>

### TIPS TO AVOID FLOOD DAMAGE

- ✦ The main electric panel board (electric fuses or circuit breakers) should be at least 12" above the projected flood elevation for your home.
- ✦ Elevate all electric outlets, switches, light sockets, baseboard heaters, electric service lines, and wiring at least 12" above the projected flood elevation for your home.
- ✦ Build a floodwall around large appliances or elevate on masonry or pressure-treated lumber.
- ✦ Furnaces and water heaters can be placed on masonry blocks or concrete, moved inside a floodwall, or moved to a higher floor.
- ✦ Outside air conditioning compressors, heat pumps or package units can be placed on a base of masonry, concrete, or pressure treated lumber.
- ✦ Fuel tanks can float or be rolled by the force of water during a flood. Tanks must be securely anchored to cement slabs. Valves and fill line openings should be above projected flood levels.
- ✦ To prevent flood waters from entering the sewer system and forcing sewage into your home, install an interior or exterior backflow valve.
- ✦ Build drainage systems or levees around your property.
- ✦ Seal openings such as low windows.
- ✦ Construct exterior floodwalls around basement doors and window wells.

**ELEVATE OR RELOCATE STRUCTURES  
OUT OF THE FLOODPLAIN**

### SAN JUAN COUNTY PERMIT REQUIREMENTS FOR NEW CONSTRUCTION, SUBSTANTIAL IMPROVEMENTS, AND MANUFACTURED HOME PLACEMENT IN FLOOD HAZARD AREAS

Structures in an area where the Base Flood Elevation has been established—**Zone A1**

1. Lowest floor and machinery will be at least **one foot** above the Base Flood Elevation.
2. An Elevation Certificate **must** be submitted and a Floodplain Permit obtained before project begins. It is suggested that elevation be confirmed prior to framing.
3. A final Elevation Certificate will be required prior to final inspection of the structure.

Structures in an area where the Base Flood Elevation has not been established—**Zone A2**

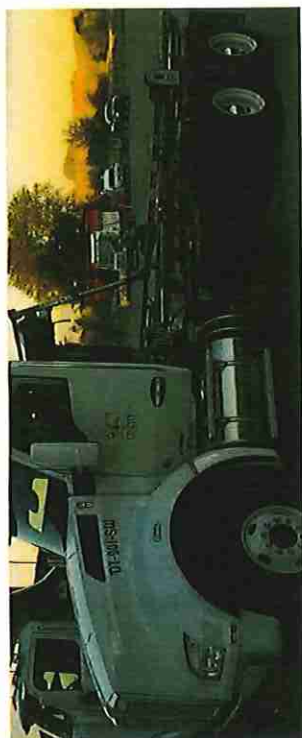
1. Lowest floor will be at least three feet above the Highest Adjacent Grade to the structure walls.
2. An Elevation Certificate must be submitted and a Floodplain Permit obtained before project begins.
3. A final Elevation Certificate will be required prior to final inspection of the structure. It is suggested that elevation be confirmed prior to framing.

### WHAT IS AN ELEVATION CERTIFICATE?

FEMA Form 81-31 Elevation Certificate is used to provide elevation information necessary to ensure compliance with floodplain ordinances to determine the proper insurance premium rate, and to support a Letter of Map Amendment or Revision (LOMA/LOUR).

### ANYONE CAN GET FLOOD INSURANCE

Even if you don't live in a special flood hazard area or you are renting, you can still get flood insurance.



Blanco Compactor Station – 35 CR 4460, 632-3062,  
Sun – Mon, 8 am to 6 pm, CLOSED Tue – Sat

Cedar Hill Compactor Station – 2 CR 2331, 334-7328,  
Fri – Sat, 8 am to 6 pm, CLOSED Sun – Thurs

Hilltop Transfer Station – 28 CR 7100  
Sun, 8 am to 6 pm, CLOSED Mon – Sat

Huerfano Transfer Station – 12574 Hwy 550, 320-8352,  
Sat, 8 am to 6 pm, CLOSED Sun – Fri

Kirtland Compactor Station – 141 CR 6500, 698-9472,  
Mon – Sun, 8 am to 6 pm

La Plata Transfer Station – 5 CR 1330, 326-3454,  
Sat – Sun, 8 am to 6 pm, CLOSED Mon – Fri

Lake Valley Transfer Station – 57 CR 7760, 320-3665,  
Sat, 9 am to 5 pm, CLOSED Sun – Fri

Lee Acres Compactor Station – 31 CR 5500, 632-8808,  
Mon – Sun, 8 am to 6 pm

Sand Springs Transfer Station – corner of NS & Hwy 491,  
32 miles South of Shiprock, 320-0553, Tue –  
Sat, 9 am to 5 pm, CLOSED Sun & Mon

Shiprock Compactor Station – NE Cortez Highway, 320-0385,  
Mon – Sun, 8 am to 6 pm

Upper Fruitland Compactor Station – 3 miles south of  
Narvaez School, 320-0711,  
Tue – Sat, 9 am to 5 pm, CLOSED Sun & Mon

Waterflow Compactor Station – 3574 Hwy 64, 506-5494,  
Thurs – Sat, 8 am to 6 pm, CLOSED Sun – Wed

**SAN JUAN COUNTY  
PUBLIC WORKS DEPARTMENT  
SOLID WASTE DIVISION  
305 S. OLIVER Dr.  
AZTEC, NM 87410  
505-334-4526**



## NOTICE TO THE RESIDENTS OF SAN JUAN COUNTY

The 'San Juan County Transfer Station Operational Policy' was adopted by the Board of County Commissioners of San Juan County, New Mexico, on June 07, 2011.

### SECTION 1. GENERAL PROVISIONS AND PURPOSE. –

The purpose of this document is to establish operational procedures for the environmentally acceptable, economical, orderly and safe operation of San Juan County transfer stations. This policy is designed to be a guide to better serve the residents of San Juan County.

### SECTION 2. APPLICABILITY. –

This document applies to all patrons and employees at the transfer stations located within San Juan County, New Mexico.

### SECTION 3. USERS. –

- A. Authorized  
Transfer stations are available for San Juan County residential use only. Users may be asked to provide proof of residency.
- B. Prohibited  
(All prohibited users will be directed to the San Juan County Regional Landfill and assessed the proper disposal fee.)  
Commercial haulers  
Construction or demolition companies or individuals  
Commercial businesses

### SECTION 4. SAFETY GUIDELINES. –

In order to provide for the safety of the patrons and employees, the following guidelines will be enforced.

- A. Individuals using the stations must follow the direction of the station attendant in order to maintain a safe traffic flow to the appropriate disposal container.
- B. Individuals will remain in their vehicles until they receive instructions from the attendant.
- C. Children and pets must remain in the vehicle at all times.
- D. Loads must be secured (taped).
- E. No scavenging will be permitted.
- F. Maximum speed limit within the station is 10 mph.
- G. The station attendant may refuse service, or access to the facility, for anyone failing to comply with operational rules or abusive behavior toward station attendant or other patrons.

### SECTION 5. LIMITATIONS. –

- A. Residents may dispose up to three(3) cubic yards of waste material per day. A truck bed 8' x 5' x 2' holds an estimated three(3) cubic yards.
- B. Extra long trailers may be directed to the landfill.
- C. Residents may dispose up to four tires per month.
- D. Patrons are responsible for cleaning up any debris that falls on the ramp as they unload.
- E. It is not the responsibility of the station attendants to assist with unloading.

### SECTION 6. ACCEPTABLE WASTE. –

- A. Residential household trash
- B. Paper goods
- C. Cardboard boxes (flattened)
- D. Cars
- E. Glass
- F. Old clothing
- G. Yard waste
- H. Weeds
- I. Small tree branches (5 foot length maximum)
- J. Cold ashes, if station has ash bins
- K. Tires off the rim (up to 4 tires)

### SECTION 7. UNACCEPTABLE WASTE. – (Note: Items A through G listed below can be disposed of through the Household Hazardous Waste Collection program held in the Spring and Fall each year.)

- A. Liquid waste (any kind)
- B. Pesticides
- C. Used motor oil
- D. Antifreeze
- E. Grease
- F. Paint (lead based)
- G. Auto/equipment batteries
- H. Smoldering ashes
- I. Dead animals or animal parts
- J. Toxic waste
- K. Medical waste
- L. Appliances containing freon or freon-type substances
- M. Large trees or tree branches in excess of 5 feet in length
- N. Commercial/business waste
- O. Construction or demolition debris
- P. Truck or equipment tires

Residents of San Juan County are encouraged to use the transfer/compactor sites shown in this brochure for disposal of solid waste.

## HELPING STOP ILLEGAL DUMPING

### PENALTIES FOR LITTERING AND ILLEGAL DUMPING

#### SAN JUAN COUNTY ORDINANCES

It is a violation of the State, County and City laws to dispose of solid waste anywhere except in a solid waste facility or transfer station. The following are the penalties for illegal dumping in San Juan County.

- SJC 4.6 Transporting refuse, litter or garbage in uncovered or open vehicle or containers.  
90 DAYS AND/OR \$300 FINE
- SJC 4.5 Transporting burning or smoldering refuse.  
90 DAYS AND/OR \$300 FINE
- SJC 4.3 Unlawful disposal of refuse, litter or garbage.  
90 DAYS AND/OR \$1000 FINE
- SJC 4.4 Disposing of hazardous materials or wastes.  
90 DAYS AND/OR \$5000 FINE

To report illegal dumping activities in the County or City Municipalities, please call the non-emergency number for the Communication Center (505) 334-4526

### HOW TO PREVENT LITTER AND KEEP SAN JUAN COUNTY BEAUTIFUL

#### WHAT CAN I DO?

- COVER ALL LOADS ON ALL TRUCKS
- Set an example for others, especially children, by not littering
- Carry a litterbag in your car.
- Make sure trash cans have lids that can be securely fastened. If you have outside trash collection, don't put out loose trash in boxes.
- Report areas where people have illegally dumped garbage and debris to your local highway, public works or conservation office and ask that the material be removed.
- Volunteer to help organize a cleanup.



# Dumpster Day!

OCTOBER 16, 2021



October 16, during normal business hours  
County Transfer Stations will accept normal  
loads from county residents for **FREE!**

GO TO [SJCOUNTY.NET](http://SJCOUNTY.NET) FOR MORE INFO!



# Dumpster Day!

April 9, 2022



Most County Transfer Stations will  
accept normal loads from county  
residents during regular hours for  
**FREE!**

GO TO [SJCOUNTY.NET](http://SJCOUNTY.NET) FOR LOCATIONS AND HOURS!

# Household Hazardous Waste Collection Event!

Safely dispose of household hazardous waste - for free!

## Save the Date!

Saturday, October 16

9:00 am- 1:00 pm



San Juan County  
Administration Building  
100 S. Oliver  
Aztec, NM



**Bloomfield | Kirtland  
San Juan County**  
*Please bring proof of residency*

NO WASTE FROM AZTEC OR FARMINGTON ACCEPTED  
FARMINGTON RESIDENTS visit <http://bit.ly/COFSanitation>  
for curbside hazardous waste pickup options

SJCounty.net | Facebook.com/OEMSJC | (505) 334-7700

### Bring

Used Batteries  
Light bulbs  
Auto Fluids  
Gas  
Brake Fluid  
Antifreeze  
Household cleaners  
Gardening Chemicals  
Insecticides  
Weed killers  
Fertilizers  
Aerosols  
Paints

### DO NOT Bring

Biomedical or Medical waste  
Explosives  
Compressed gasses  
55-gallon drums  
Yard waste  
Ammunition  
Appliances  
Tires  
Electronic Waste  
Business or Industrial Waste

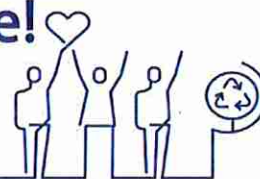
# Household Hazardous Waste Collection Event!

Safely dispose of household hazardous waste - for free!

## Save the Date!

Saturday, March 26

9:00 am- 1:00 pm



San Juan County  
Administration Building  
100 S. Oliver  
Aztec, NM



**Bloomfield | Kirtland  
San Juan County**  
*Please bring proof of residency*

NO WASTE FROM AZTEC OR FARMINGTON ACCEPTED  
FARMINGTON RESIDENTS visit <http://bit.ly/COFSanitation>  
for curbside hazardous waste pickup options

SJCounty.net | Facebook.com/OEMSJC | (505) 334-7700

### Bring

Used Batteries  
Light bulbs  
Auto Fluids  
Gas  
Brake Fluid  
Antifreeze  
Household cleaners  
Gardening Chemicals  
Insecticides  
Weed killers  
Fertilizers  
Aerosols  
Paints

### DO NOT Bring

Biomedical or Medical waste  
Explosives  
Compressed gasses  
55-gallon drums  
Yard waste  
Ammunition  
Appliances  
Tires  
Electronic Waste  
Business or Industrial Waste

# Report Illegal Dumping!

See it

Snap it

Send it

If you are enjoying public lands and see illegally dumped trash, it's easy to report!

With the Clean Up San Juan App, mark your GPS location and upload a picture.

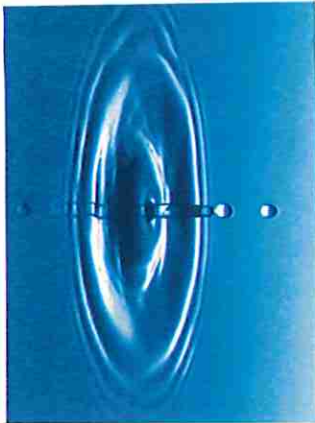
That's it! You just helped keep San Juan County public lands clean!

## Download CLEAN UP SAN JUAN

### for iPhone and Android!







## CITY OF AZTEC

# 2022 Annual Water Quality Report



### Water Conservation Tips

Did you know that the average U.S. household uses approximately 400 gallons of water per day or 100 gallons per person per day? Luckily, there are many low-cost and no-cost ways to conserve water. Small changes can make a big difference – try one today and soon it will become second nature.

- Take short showers - a 5 minute shower uses 4 to 5 gallons of water compared to up to 50 gallons for a bath.
- Shut off water while brushing your teeth, washing your hair and shaving and save up to 500 gallons a month.
- Use a water-efficient showerhead. They're inexpensive, easy to install, and can save you up to 750 gallons a month.
- Run your clothes washer and dishwasher only when they are full. You can save up to 1,000 gallons a month.
- Fix leaky toilets and faucets. Faucet washers are inexpensive and take only a few minutes to replace. To check your toilet for a leak, place a few drops of food coloring in the tank and wait. If it seeps into the toilet bowl without flushing, you have a leak. Fixing it or replacing it with a new, more efficient model can save up to 1,000 gallons a month.
- Adjust sprinklers so only your lawn is watered. Apply water only as fast as the soil can absorb it and during the cooler parts of the day to reduce evaporation.
- Teach your kids about water conservation to ensure a future generation that uses water wisely. Make it a family effort to reduce next month's water bill!
- Visit [www.epa.gov/watersense](http://www.epa.gov/watersense) for more information.

### Source Water Protection Tips

Protection of drinking water is everyone's responsibility. You can help protect your community's drinking water source in several ways:

- Eliminate excess use of lawn and garden fertilizers and pesticides – they contain hazardous chemicals that can reach your drinking water source.
- Pick up after your pets.
- If you have your own septic system, properly maintain your system to reduce leaching to water sources or consider connecting to a public water system.

### Cross Connection Control Survey

The purpose of this survey is to determine whether a cross-connection may exist at your home or business. A cross connection is an unprotected or improper connection to a public water distribution system that may cause contamination or pollution to enter the system. We are responsible for enforcing cross-control regulations and ensuring that no contaminants can, under any flow conditions, enter the distribution system. If you have any of the devices listed below, please contact us so that we can discuss your connection; if needed, we can survey your connections to the water system and assist you in preventing a cross connection. Devices that can cause a cross-connection to the water system include: A Boiler/ Radiant heater (water heaters not included); Underground lawn sprinkler systems; Pool or hot tub (whirlpool tubs not included); Additional source(s) of water on the property; decorative pond; and watering troughs.

# Free Clean Up Events



## Fall Community Clean-Up

Help keep Aztec beautiful. Bring excess waste to this special event for safe, clean, free disposal. Acceptable items include regular household trash, appliances without refrigerant, green waste and bulky items such as furniture and mattresses.

### EVENT DETAILS

- Nov. 14-22, 2022
- Open 24/7
- Riverside Park

## Green Waste Home Collection

Aztec residents can call WM to have their yard waste picked up at their home. You must call (505) 327-6284 by Nov. 11 to schedule your collection. Collection dates are Nov. 14-18, 2022.



### Accepted Materials

- Grass clippings, leaves, tree branches and brush.
- Branches must be cut, bundled and tied.
- Each bundle may be a maximum of 50 pounds and 4 feet in length.
- No limbs larger than 3-inches in diameter.
- Please bag loose, small material.

### Unacceptable Items

- Dirt, stone, concrete, rock.

Helping the communities we proudly serve stay safe, clean and green.



# Free Clean Up Events



## Spring 2023 Community Clean-Up

Help keep Aztec beautiful. Bring excess waste to this special event for safe, clean, free disposal. Acceptable items include regular household trash, appliances without refrigerant, green waste and bulky items such as furniture and mattresses. For Aztecs residents only. Bring photo ID and a recent utility bill as proof of residency.

### EVENT DETAILS

- April 21-24, 2023
- 8:00 am - 4:30 pm
- Riverside Park

## Green Waste Home Collection

Aztec residents can call WM to have their yard waste picked up at their home. You must call (505) 327-6284 by May 5, 2023 to schedule your collection. Collection dates are May 8-12, 2023.



### Accepted Materials

- Grass clippings, leaves, tree branches and brush.
- Branches must be cut, bundled and tied.
- Each bundle may be a maximum of 50 pounds and 4 feet in length.
- No limbs larger than 3-inches in diameter.
- Please bag loose, small material.

### Unacceptable Items

- Dirt, stone, concrete, rock.

Helping the communities we serve  
stay safe, clean and green.



# Additional Services



## At Your Door Special Collection<sup>SM</sup>

**Do you have old electronics in your Aztec home? Used motor oil? Old cans of paint? Used batteries?**

Use the convenient At Your Door Special Collection<sup>SM</sup> service to safely, easily and responsibly dispose of home-generated special materials. It's included in your waste bill, so there is no additional charge for this service. What are you waiting for? Contact us today.

### Materials accepted through this program include:

#### Automotive products

- Antifreeze, batteries, brake fluid, motor oil and filters, fuels, and more.

#### Garden chemicals

- Fertilizers, insect sprays, herbicides, pesticides, and weed killers.

#### Paint products

- Paint, caulk, glue, stain, stripper, thinner, and wood preservative.

#### Household cleaners

- Ammonia, heavy-duty cleaner, rust remover, tile/shower cleaner, upholstery cleaner, and more.

#### Electronics

- Computer, monitor, keyboards, MP3 players, televisions, DVD/CD players, tape players, VCR, cell phones, desktop printers, fax machines, and microwaves.

#### Mercury containing items

- Batteries, compact fluorescent lamps, fluorescent tubes, thermometers, and thermostats.

#### Sharps, needles, and lancets

- Must be placed in a sealed, rigid, puncture resistant container.

**Schedule an At Your Door<sup>SM</sup> collection at your home at no additional cost in one of these three ways:**

- Go to [WMATYOURDOOR.COM](http://WMATYOURDOOR.COM)
- Call (800) 449-7587 - We're available 6 AM - 6 PM MST M-F.
- Email [AtYourDoor@WM.com](mailto:AtYourDoor@WM.com)

Through the City of Aztec contract with WM, residents have access to additional disposal services including:

#### FREE LANDFILL USE

Six (6) times per year, residents may dispose of up to 1,000 pounds of residential waste to San Juan County Landfill for FREE. Bring photo ID and a recent utility bill as proof of residency. Note: Name or address on bill must match ID.

Does not include tires, prohibited, or unauthorized waste. Additional restrictions may apply.

#### FREE LARGE ITEM COLLECTION

Twice a year, WM will collect large items from your residence, like furniture, mattresses and appliances without refrigerant. Must schedule ahead. Call (505) 327-6284.

